

# OKINAWA SKETCHES

TEC5 IRWIN C. McFADDEN

ILLUSTRATOR FOR "THE DAILY OKINAWAN" MILITARY NEWSPAPER  
OKINAWA 1945-46



16 JANUARY 1946

THE WEEKLY OKINAWAN is published Wednesdays by the Information and Education Section, Okinawa Base Command, Maj James J. Kasperek, Chief of Section.

Editor -

T Sgt Charles J. Stark

Art -

Tec 4 F. J. Torbert, Tec 5  
Benny De Nunez, Tec 5 Alan W.  
Chute, Tec 5 Irwin McFadden

Photography -

Pfc Frank R. Porschatis

Sports -

Pfc J. R. Farber

Staff writers -

Tec 5 J. W. Stepp, Pfc Ted  
Hirsch, Pfc Burton A. Tschache

Reproduction -

S Sgt Gus M. Raymer, Tec 4 Gordon R. Wilkowski

Editorial Supervisor -

1st Lt John H. Tompkins

Telephone -

Cleveland 427 or Moscow 671

This paper uses CNS, ANS, AP  
and UP material.

IRWIN McFADDEN'S FIRST SKETCHES APPEARED IN "THE WEEKLY OKINAWAN" A  
MILITARY NEWSPAPER FIRST PUBLISHED ON OKINAWA ON 28 NOVEMBER 1945.

REVISED 2 SEP 2010

COPYRIGHT © 2010 DONN E. CUSON



*Me Sarge? I aint nuttin' - jest a pore little war bride ...*

16 JAN. 1946 ISSUE OF "THE WEEKLY OKINAWAN"

ON 1 FEB. 1946 THE WEEKLY OKINAWAN WENT TO DAILY PUBLICATION AND IRWIN BEGAN PUBLISHING SKETCHES ALMOST DAILY



#### THE DAILY OKINAWAN

Published jointly by Information & Education Section, Okinawa Base Command; Staff Welfare Office, Naval Operating Base; and Information & Education Section, 8th Air Force. Edited, reproduced and printed at Okinawa Press, Futema. Telephone MOSCOW 670 and 671.

EDITORIAL--Yfc Hal Conrad; Pfc J. R. Farber, sports; Sfc Dave C. Fender; Yfc L.J. Fitzsimmons; Cpl Gordon G. Geis; Sfc G.G. Goodrich; Pfc Ted Hirsch; Tec 4 Norman A. Porter, Editor; Tec 5 J.W. Stepp; Pfc Burton A. Tschache; Pfc Bob Whearley.

ART--Tec 5 Alan W. Chute; Tec 5 Benny De Nunez; Tec 5 Irwin C. McFadden; Tec 4 Floyd J. Torbert.

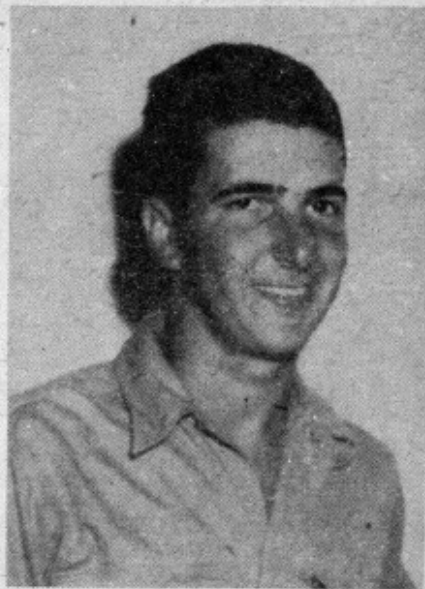
PHOTOGRAPHY--PhoM3c Merritt Hadley; Tec 5 Frank R. Porschatis.

REPRODUCTION-- Pfc Hillis M. Beineke; Tec 5 Jack DeMoor; CM3c H.J. Crawford.

PRODUCTION & CIRCULATION--Sfc C. O. Gast; Sfc Frank Halovanic; Cpl Paul Harmon; Sgt Tim Henry; Sfc Michael Kossick; Cpl Charles Law; Cpl Fred Leers; Sgt Mel Manheimer; Cpl George Marck.

OFFICER IN CHARGE--1st Lt John H. Tompkins





Cpl Thomas Hanley



Tec 4 Irwin McFadden

Looking none too depressed at winning 25 dollars a piece in the Okinawan Art Contest, each taking two first places, the boys settle back now to await the outcome of the All-Pacific contest to be conducted in Tokyo sometime in May.

(Photos by Porschatis)

## WINNERS ANNOUNCED IN ART CONTEST

Okinawa's Art contest, sponsored by Special Services, closed this week with the Daily Okinawan's own Tec 4 Irwin McFadden of "Okies by Mac" fame receiving 25 dollars prize money and placing first in both Class I and Class II of the two-class contest conducted by the Army Ground and Service Forces. Similarly Cpl Thomas Hanley of the Army Air Force received 25 dollars prize money and took first place in both Class I and Class II of the contest conducted by the 8th Air Force. Both contests were judged by a mixed committee of Special Services officers from the two branches of service.

In the 8th Air Force contest Class I second place went to Cpl Vincent B. Rhodes, who was awarded five dollars as prize money, while second place in Class II of the contest was taken by Corporal Hanley. Second place in both classes of the AGF contest went to Cpl Harry M. Simmons, who received 23 dollars in prize money. And again in Class II Simmons won third place, while McFadden

held third place in Class I.

The 8th Air Force had no third place, but differentiated between oils and water colors giving Cpl Alfred F. Clark, a first prize of ten dollars for the best water color drawing, and also in the Air Force contest Cpl Samuel Lefkowitz won first prize of ten dollars in the photography contest.

The Army Ground Forces had no photography entries, and counted oils and water color drawings as in the same class, however they had an honorable mention, which was held in Class II by another Daily Okinawan staff artist, Pfc Dave Caruso, and honorable mention in Class I went to Simmons.

The contestants' work will be sent to Tokyo to compete in the All-Pacific Art contest to be judged by a specially selected committee sometime in May.

Class I of the Okinawan contest consisted of pencil, ink and charcoal drawings, and Class II, oils or water colors. A total of 100 dollars was distributed among the winners as prize money.

**IRWIN WINS \$25 FIRST PLACE IN ART CONTEST**  
**DAILY OKINAWAN 7 APRIL 1946**



## OKIES by Mac



- The children help take care of the babies... It's not uncommon to see a child playing in the streets with baby brother or sister strapped to the back....

## OKIES by Mac



The highest point on the island is Yonaha Dake, in northern Okinawa. - It stands 1,650 ft. above sea level.

## OKIES by Mac



Wooden clogs are a popular item of footwear all over the Pacific area. The illustrated type is most common on Okinawa...

## OKIES by Mac



The home and grounds of the prosperous farmer were worth 15,000 Yen, or \$3000... Many of the finer homes were owned by Okinawans who had lived and prospered in Hawaii...



IRWIN ALSO DID LARGE SKETCHES FOR SPECIAL TOPICS  
SUCH AS THE SKETCH BELOW

THE DAILY OKINAWA

THURSDAY, 7 MARCH 1946

# IS OKINAWA A "SALT MINE"? HMPH!!



THE AVERAGE OUTSIDER'S CONCEPTION OF OUR OKINAWA. HE SWALLOWS IT ALL---BECAUSE HE 'SEES BY THE PAPERS.' (SKETCHED BY STAFF ARTIST SGT IRWIN MCFADDEN)

## OKIES by Mac



Very few Okinawan men  
ever lose their hair...and a  
gray head under 40 is a rarity

## OKIES by Mac



This method of transportation is  
simply "no Joto" to the good towns-  
folk of Okinawa....The custom is  
slowly disappearing....



## OKIES by Mac



This is an approved method of transporting goods, and many Okinawans consider it much more refined than carrying goods atop the head.

## OKIES by Mac



Attention beach-combers!  
Low tide occurs every 12 hrs. and 25 minutes ... For example: If the tide is out at 10:00, it will be out again at 22:25 ....

## OKIES by Mac

This is a costume of the dancer.

The descendants of professional entertainers perform the traditional dances.



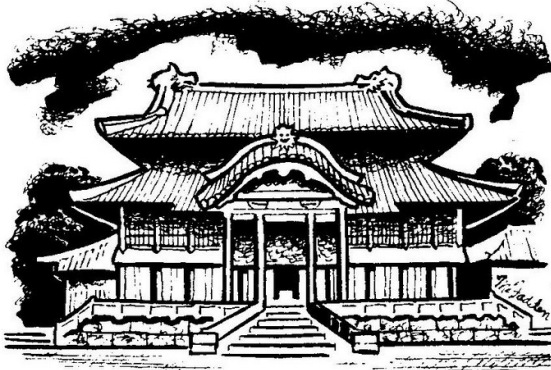
## OKIES by Mac



The Naha Chapel was formerly a native Christian church ... There were 21 Christian (Kay-dee'-stah) churches on Okinawa with 2,090 members ...



## OKIES by Mac



### .. SHURI CASTLE ..

For 700 years, the Okinawans maintained their own succession of kings at Shuri. Their independence ended in 1879, when the island became a part of the Japanese empire.

## OKIES by Mac



McJadden

The child learns to use chop-sticks (O-HANSH') at the age of three... The lower stick is held firmly by the thumb and long finger and is stationary. The upper stick is held by the thumb and index finger and is moved as a pincer....

## OKIES by Mac



McJadden

The Okinawans believed that there was a spirit that protected their town. These small shrines were built to that guardian spirit...

## OKIES by Mac

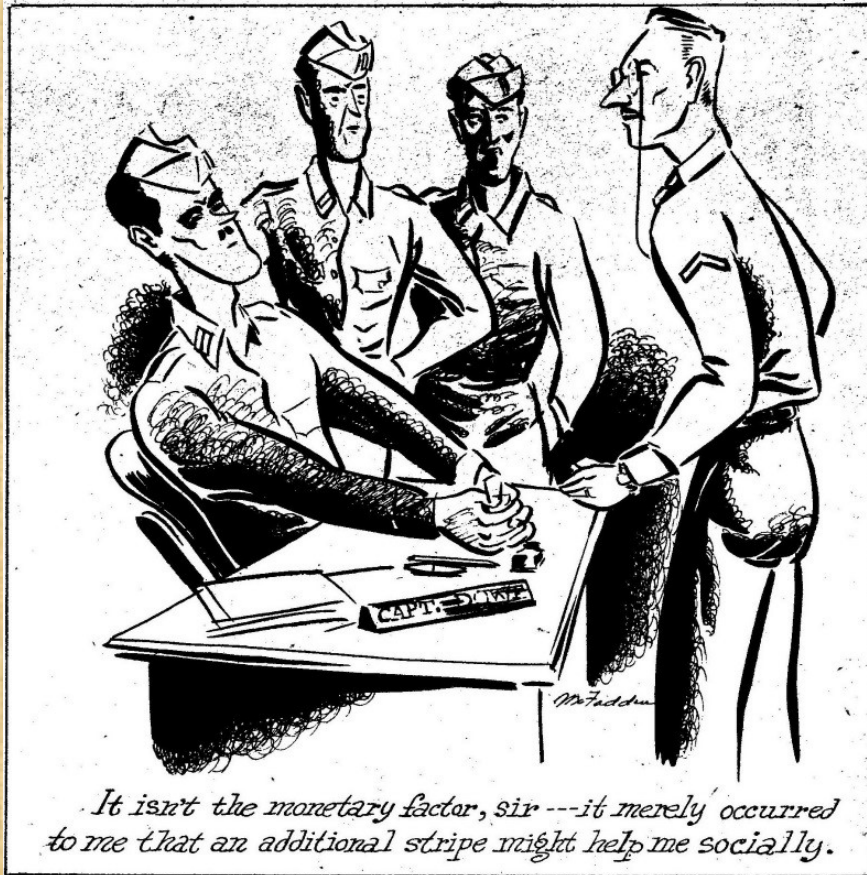


McJadden

At the museum near Ishikawa, Okinawan scholars are busy restoring records that were lost during the invasion....



IRWIN ALSO CONTINUED TO DO OCCASIONAL CARTOONS



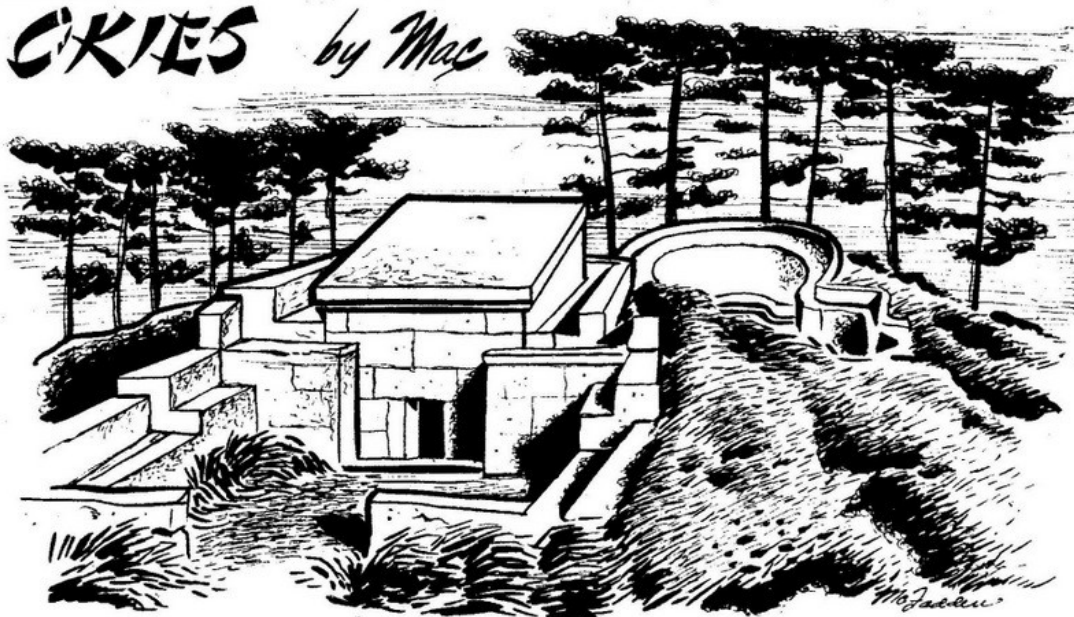
**OKIES** by Mac



The childrens' dress is very gay and colorful. ... The dress of adults is very somber and bright colors are not considered in good taste...

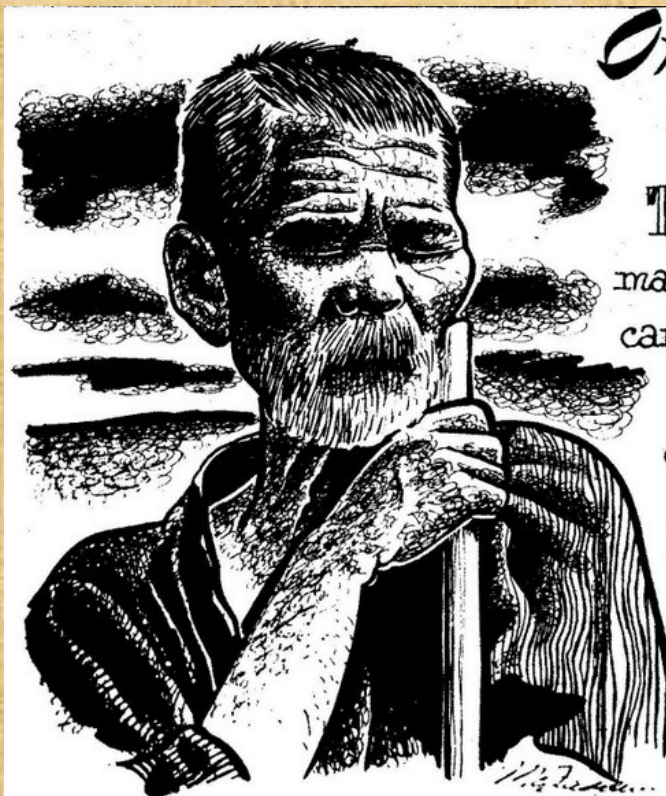


## OKIES by Mac



Why the variety of designs of the tombs (Hah'Ka)? Sometimes it was a matter of money. The familiar tomb in the background cost at least 1500 YEN. The rectangular design in the foreground cost much less — not more than 700 YEN . . . .

## OKIES by Mac

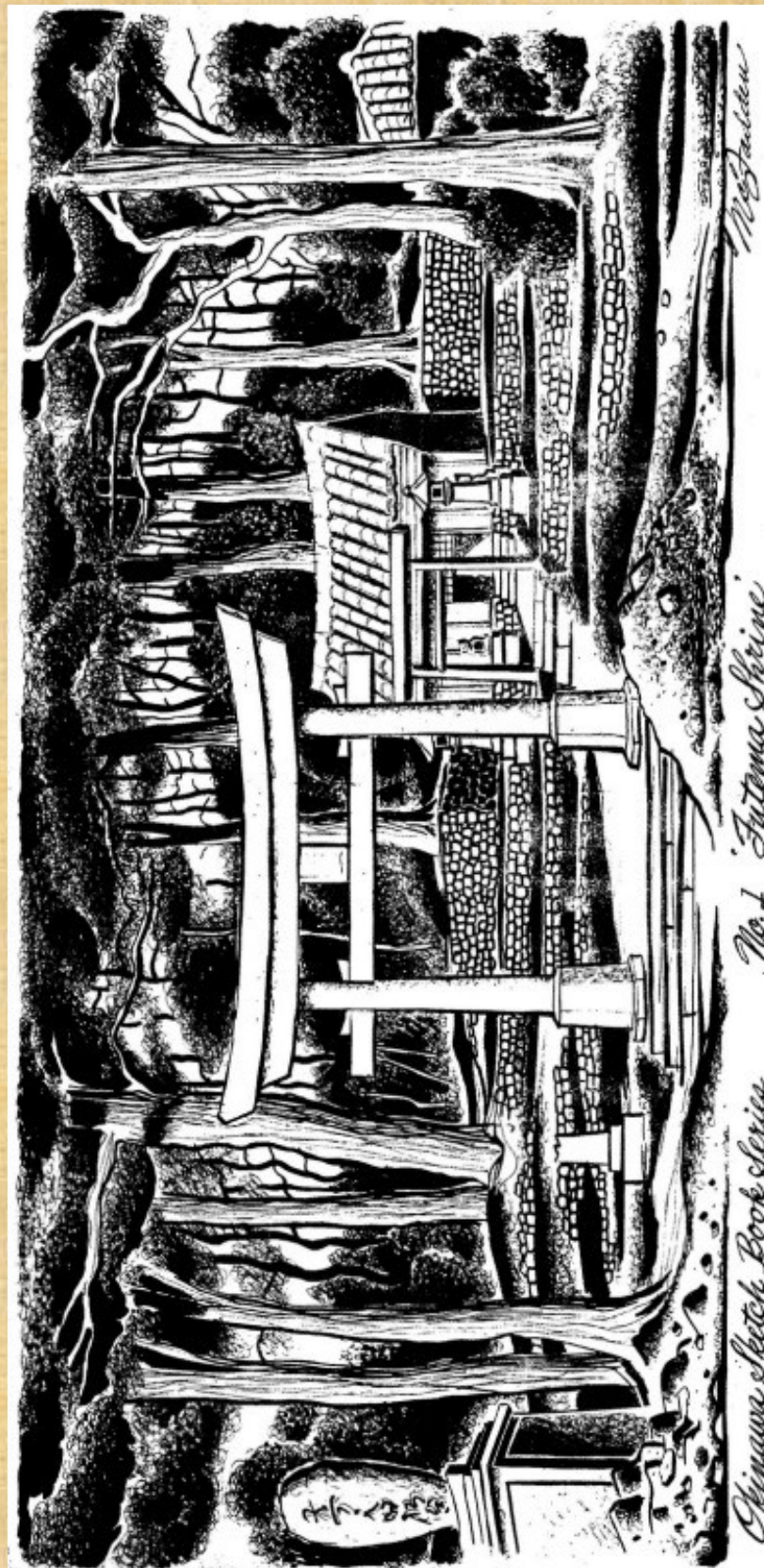


This old fellow, like many Okinawans over 50, can't speak Japanese.

He is unable to read or write, for there is no written Okinawan language. Although similar in structure, the two languages are mutually unintelligible.

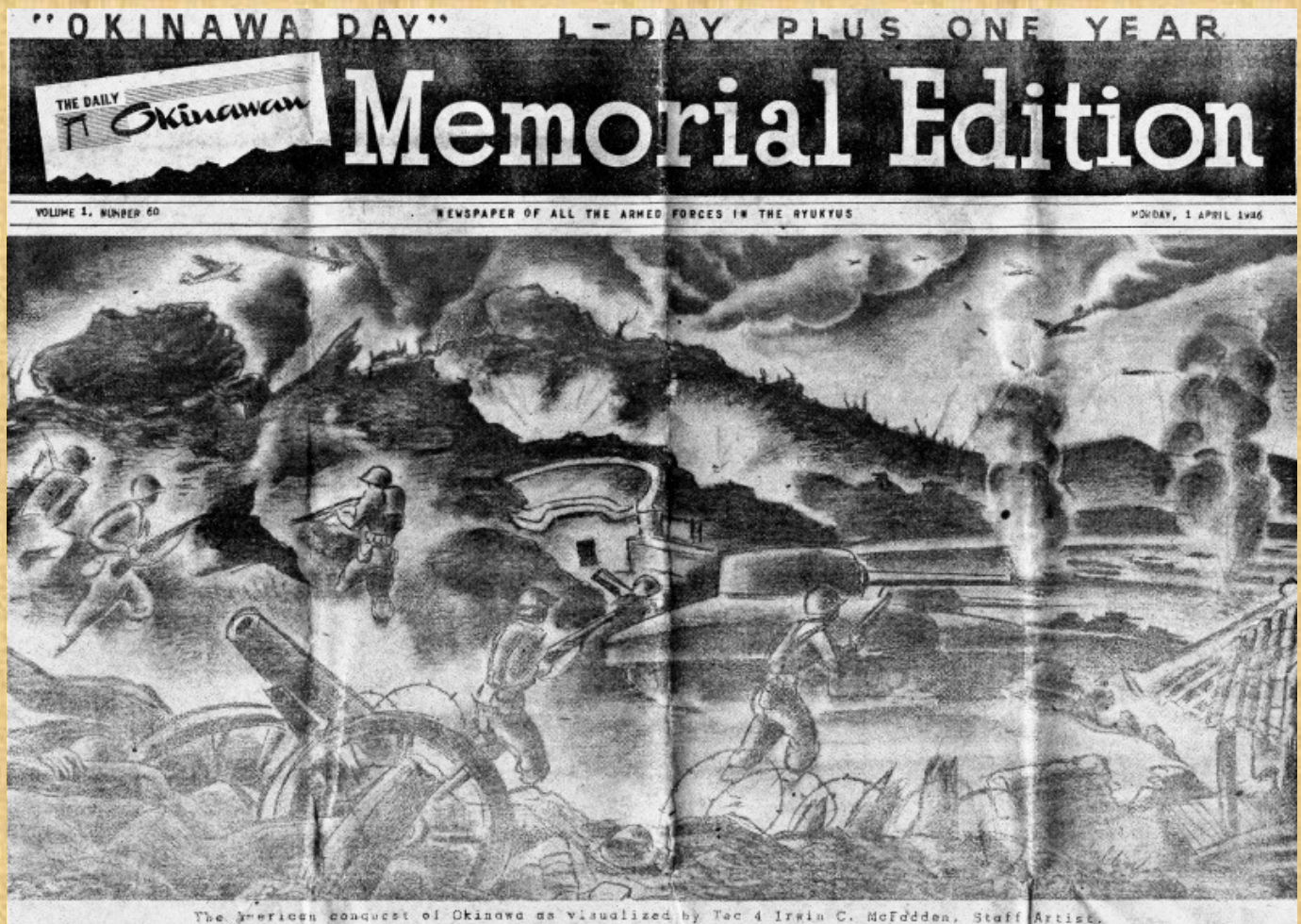


IRWIN ALSO STARTED A LARGE FORMAT "OKINAWAN SKETCH BOOK SERIES". THIS IS NUMBER 1 IN THE SERIES





THIS IS IRWIN'S SPECIAL SKETCH FOR THE 1ST ANNIVERSARY OF THE  
INVASION OF OKINAWA ON 1 APRIL 1945





## OKIES by Mac



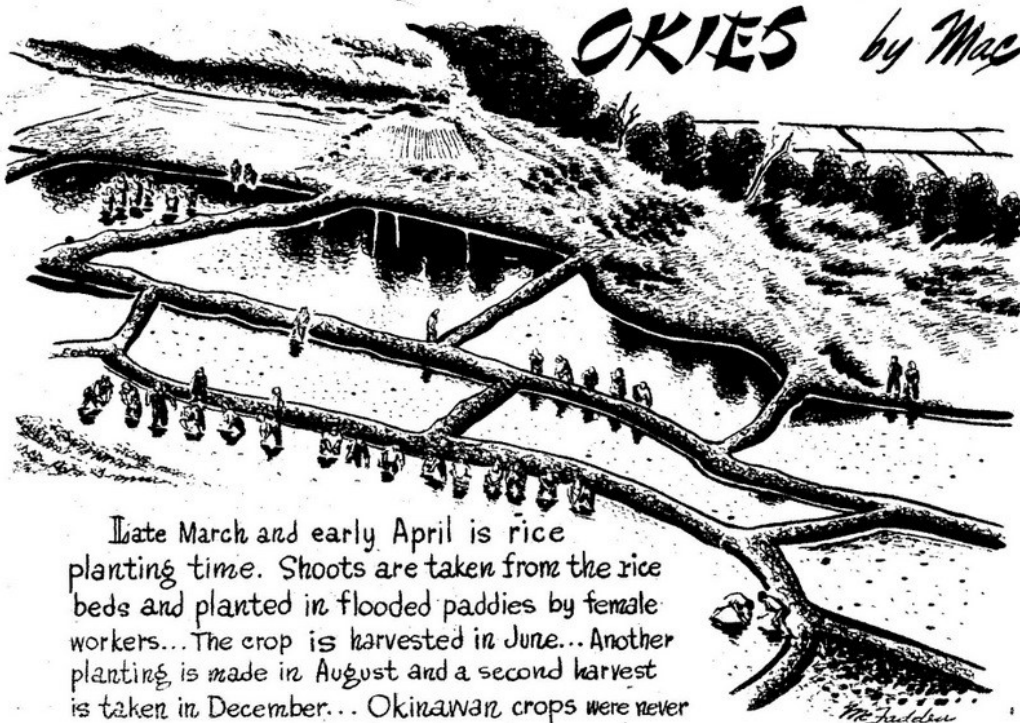
This is Mr. Shiohoma Kosei, council member of Nago. He speaks Spanish and English as well as Japanese. From 1927 to '33 he worked in Peru. The next 7 years were spent in Yokohama as a tailor. Came to Naha in 1940 and was director of Oki clothing association.....Hundreds of Okinawans have lived in S.America and speak Spanish fluently.

## OKIES by Mac



The cooking equipment in the average home consists of nothing more than a few pots and pans-a few stones and firewood. Meal times are not as highly regulated as they are in America....

## OKIES by Mac



Late March and early April is rice planting time. Shoots are taken from the rice beds and planted in flooded paddies by female workers...The crop is harvested in June...Another planting is made in August and a second harvest is taken in December... Okinawan crops were never sufficient and much rice was imported....

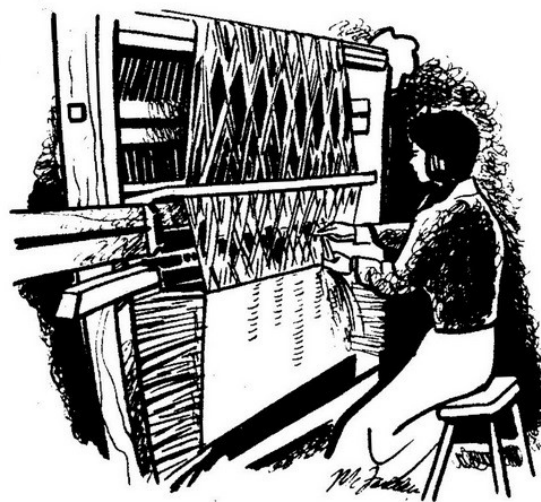


## OKIES by Mac



*The frightful lion that stands on the roof will challenge and drive away the evil spirits... To the less superstitious, it is only a dream of*

## OKIES by Mac



*Mat-making is an important Okinawan craft since the entire floor space of homes is covered with mats. They are made of grass and turned out on a hand-loom.*

## OKIES by Mac



*The large towns - Naha, Ito-man, Shuri and Nago - had electricity. Rural homes used kerosene lamps and candles.*

## OKIES by Mac



*The only animal indigenous to the island, is the wild pig. They grow to weigh over 100 lbs., are very destructive, and ferocious when cornered. The natives enjoy hunting them for they are edible.*



## OKIES by Mac



One of the most popular trees in local art and legend is the 'matsu'—an evergreen. — Boughs are cut at New Years and decorated somewhat after the fashion of our Xmas tree.

## OKIES by Mac



Before the war, Okinawans smoked Japanese cigarettes. Various styles of holders are popular and the butts are smoked to the last drag.

## OKIES by Mac



A decayed front tooth is no tragedy — because it means a bright stylish gold cap..... The price — 7 Yen.

## OKIES by Mac



The women of the 'better families' are not adverse to breaking the standing taboos of the island. They had permanents, used make-up and wore colorful kimonos and Western dresses.



# OKIES by Mac



Before Japan imposed  
its moral code upon the Okinawans,  
women used tobacco..... Today  
grandma will gladly accept a  
cigarette while grand-daughter  
will politely refuse....

# OKIES by Mac



Many of the native canoes  
are made by hollowing out  
evergreen logs....



## OKIES by Mac



The sosige tree is grown extensively because the leaves make excellent fertilizer — It looks very much like the American willow.

## OKIES by Mac



Thatch roofs may give the appearance of poverty, but they are entirely practical and afford perfect protection against rain, heat and cold. Well constructed, they will last for 20 years.

## OKIES by Mac



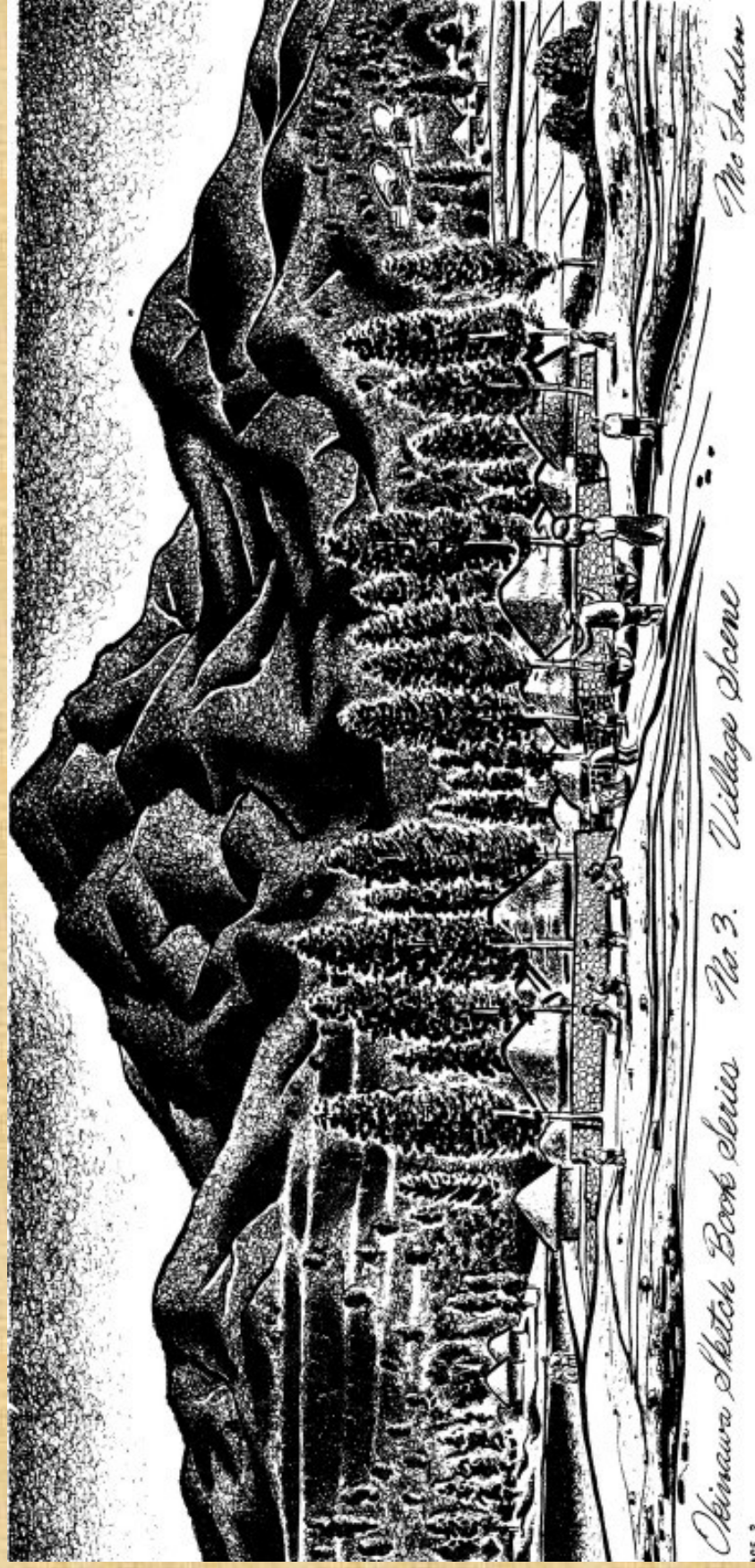
This is the sotets-Okinawan fern palm. It bears an edible fruit. The ferns are used as fuel for cooking. During times when food is scarce, the stump is ground into a flour and eaten...

## OKIES by Mac



Okinawans have never shown much interest in water sports. Children enjoy swimming and splash about naked. — Men bathe in the sea... Women seldom if ever go swimming

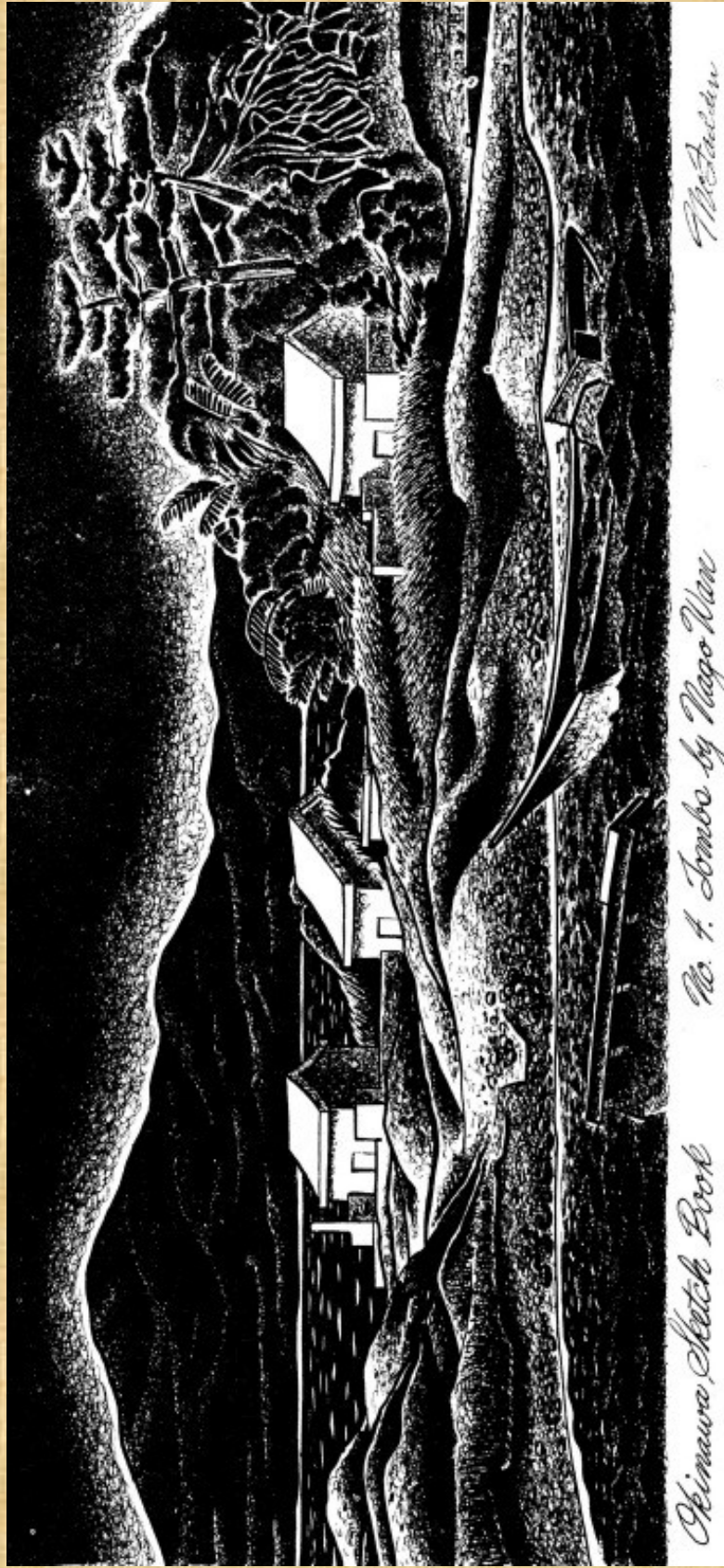




Okinawa Sketch Book Series No. 3. Village Scene

Mc Sadler





*Okinawa Sketch Book*

*No. 4. Imbo by Nago Wan*

*McFadden*







IRWIN ALSO DID SKETCHES FOR THE SPORTS PAGE OF THE  
DAILY OKINAWAN

FRIDAY, 24 MAY 1946

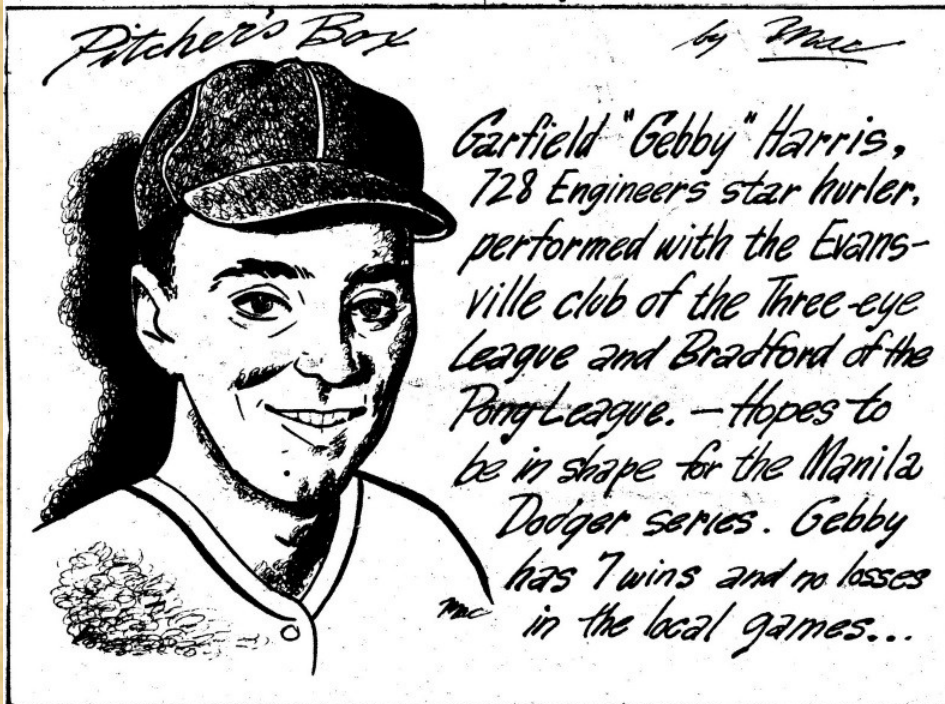
*The Pitcher's Box*

*Mac*



*Pitcher's Box*

*by Mac*





IRWIN ILLUSTRATED THE COVER FOR THE NAVAL SUPPLY DEPOT PUBLICATION

OKINAWA MEMORIES  
PUBLISHED IN 1946





**IRWIN SUPPLIED SKETCHES FOR THE 1ST AIR DIVISION BOOK**

**1ST AIR DIVISION - OKINAWA**

**PUBLISHED IN 1947**

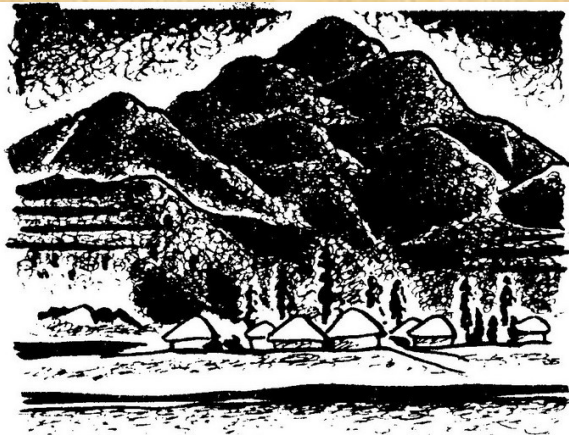
1947  
1st Air Division  
A. F. HEGENBERGER  
Major General USA  
Commanding

Line illustrations by  
MCFADDEN  
formerly of  
THE DAILY OKINAWAN

Written and compiled by  
CAPTAIN ROBERT F. MERRITT  
Staff Public Information Officer

**INSIDE FRONT COVER**





*Okinawa is rich in scenic beauty but poor in natural resources. There is no ore and very little timber of commercial value.*



The islands of the Ryukyus are peaks of submerged mountains. Okinawa is neither coral nor Volcanic in origin.

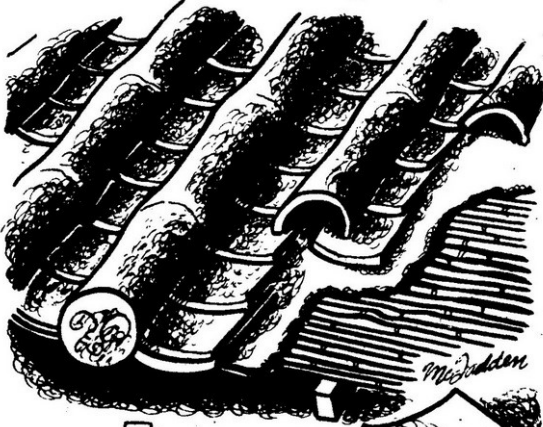


In 1940, Okinawa Shima had a population of 435,000... Of this number, 80% lived in the hundreds of small villages and farm communities that dot the island....



*Okinawan homes have no basements... Floor beams rest on rocks placed on the ground....*

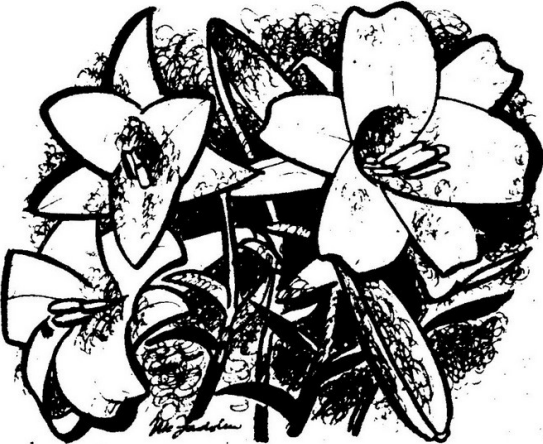




*The construction of the roof is an intricate affair. Rods of bamboo are placed over the rafters, upon which a layer of mud is laid. Quarter sections of tile are then fitted over the mud... Mud filled half cylinders are fitted and cemented together and to the roof...*



*A stiff coarse cloth is made from a variety of banana tree that grows here.... Another variety bears a small edible banana*



*This is the Youdi... a wild lily that grows in great profusion on Okinawa... ... Blooms in April and May*



*A dull kimono is the correct dress for all special occasions. —The better class Okinawan women often broke precedent with the custom and wore Western clothes or colorful kimonos...*





*One of the highly developed Okinawan crafts is basket weaving. The materials-grass and bamboo....*



*This is the 'She-she', the lion that stands guard in front of the jinjak and drives away the evil spirits*



*Okinawa has a year-round growing season...The neatly terraced hillsides produce an abundance of vegetables...The bulk of the winter crop was shipped to Japan.*



*The Okinawan schools followed the Tokyo system to the letter... Six years of schooling was compulsory and nearly everyone under 50, speaks and writes Japanese.*

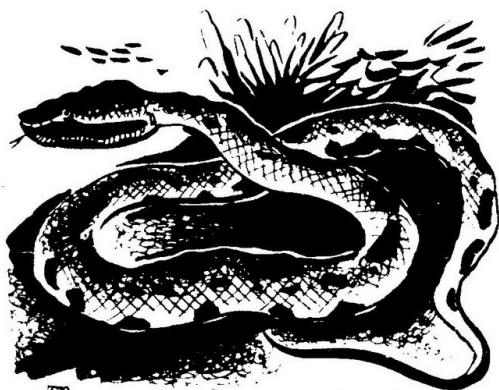




From 3 to 6 destructive typhoons can be expected to strike Okinawa during the months of May through October.



Wells, sometimes 70 ft. deep, furnished the water for most of the Okinawa households. Naha had the only water system and it served only 25% of the city's 60,000 people.

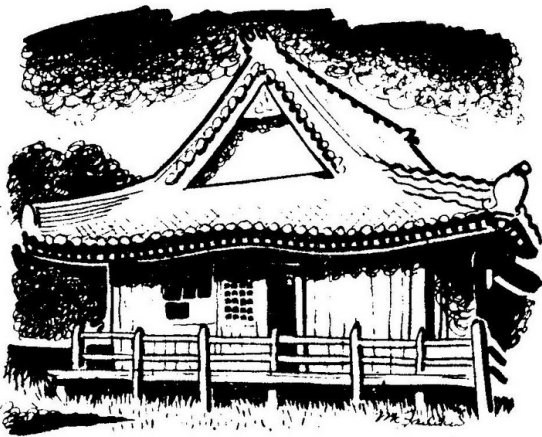


There are snakes on the Island... they hibernate from Nov. thru Feb. The deadly poisonous "HABU" are still numerous in northern Okinawa...



NAH-ME'NO oo-YEH' JIN'JAH  
... 'Shinto Shrine by the sea' ... at Naha. In 1935, there were eight Shinto Shrines on Okinawa...



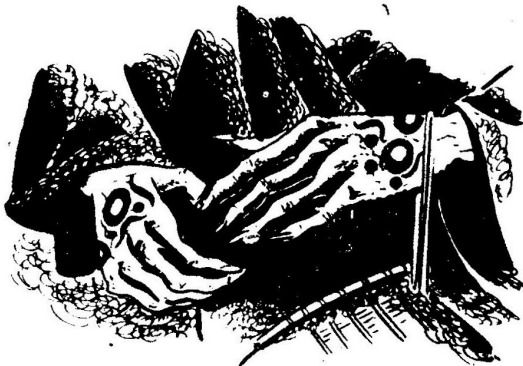


### Buddhist Temple

The majority of Okinawans are Buddhists (BŪK-KYO). Shintoism and ancestor worship were incorporated with Buddhism without any conflict.



Before the invasion, land was privately owned... At present, the farm people are working in a communal effort to obtain maximum return from the soil. Soon the farms will be restored to former owners.



At one time, the hands of Okinawa brides were tattooed — as a symbol of suffering to be endured by women. — The Japanese abolished this custom, but designs can still be seen on the hands of old women.

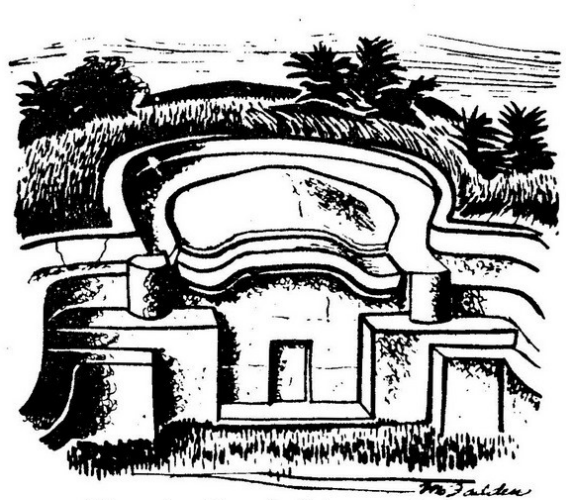


The Okinawans are a law abiding people. With the exception of a few petty thefts — crime is practically non-existent.





*The Okinawans are familiar with Western music. All school children know "You Are My Sunshine". Many of the urban people know much of the best of European and American classics...*



*The turtle shell type of tomb is the most popular and traditional. The design came from South China where the turtle is symbolic of long life... The resemblance of this design to the shape of the womb has been noted—however the resemblance is coincidental/.....*

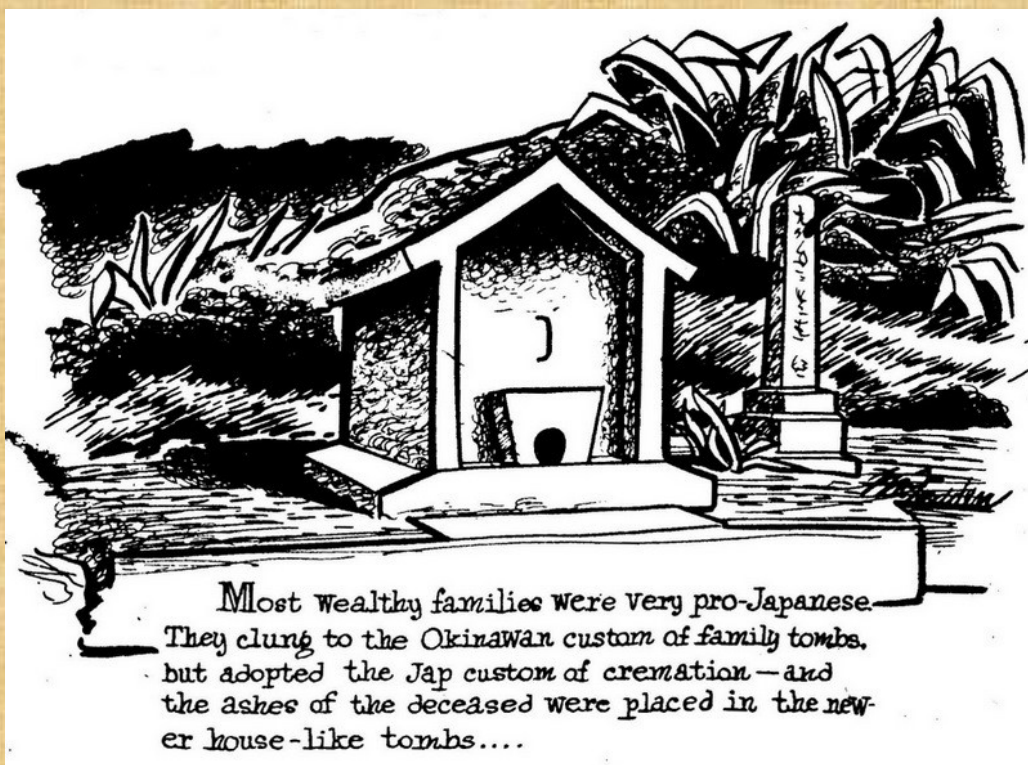
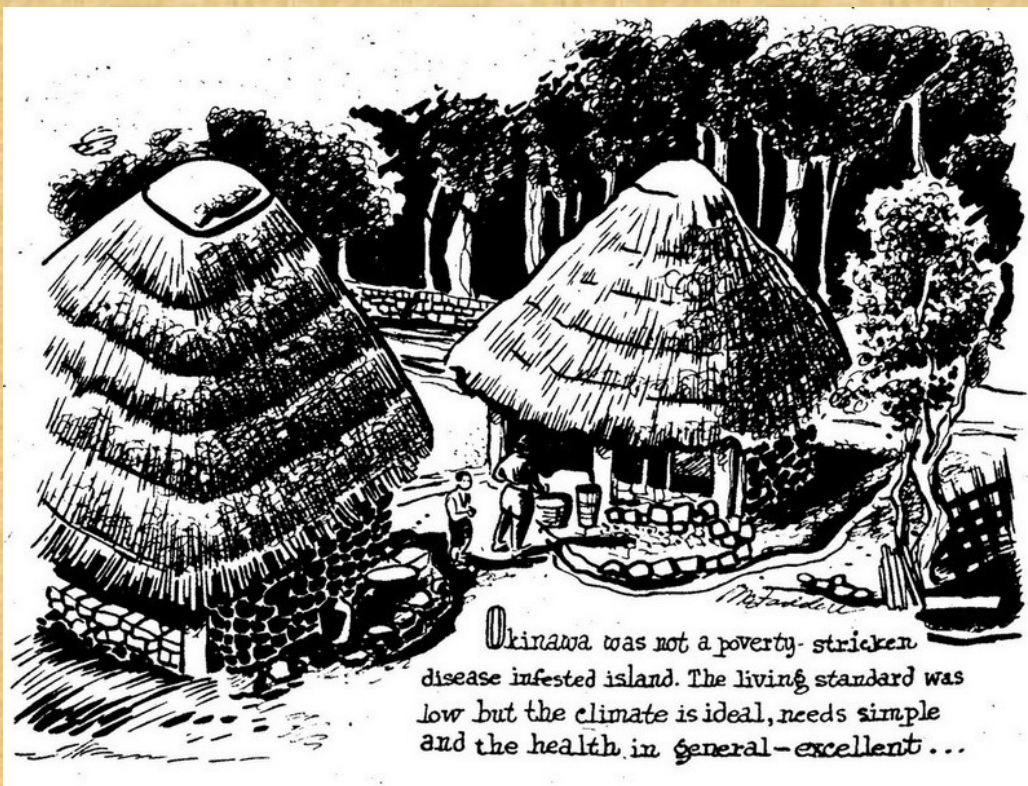


*The most religious aspect of life was centered about the tombs and the sea. People went to their tombs many times during the year to worship and pray for the souls of their ancestors.*

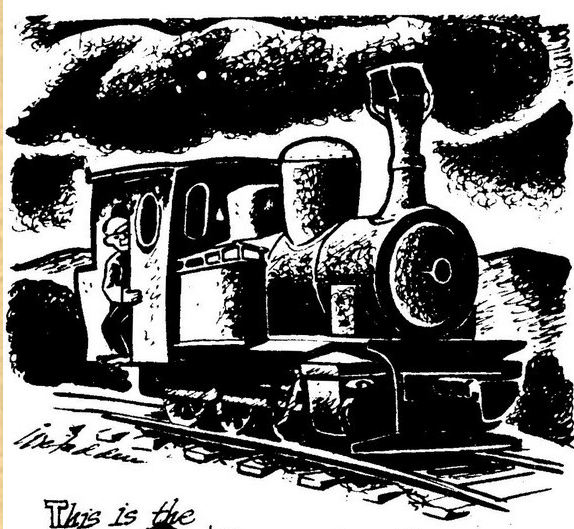


*Old people cling to the ancient traditions... The Okinawans are of the same racial stock as the Japanese, yet they are culturally closer to the Chinese.*









*This is the locomotive that worked the narrow gauge track that ran from Itoman, Yonabaru, thru Naha to Kadena. There were 6 cars (3 passenger and 3 freight) and 7 trips a day were made... The line did a thriving business.*



*30 miles of 30 inch gauge railway connected Itoman, Yonabaru, Naha and Kadena*



*The Okinawan baby is carried on the back until 20 months old - is weaned after 15 months...*



*This is the Ichi-toro that stands before the shrine. During the days of celebration, candles were placed in the lamp and lighted.*





*The respectable Okinawan girl does not smoke or drink.....Romantic love (Occidental style) does not exist...A boy-girl display of affection is repulsive....Kissing is taboo.*



*At a factory near Naha, natives are busy making roof tile. This workman, Taiyama, wraps a layer of clay about the form, spins the form with left hand and molds with right. He turns out 250 pieces a day. The pre-war price of roof tile was 7sen a piece*



*The two story house that stands at the village entrance was used as a storage place for the community farm produce....*



*In northern Okinawa - nearly all homes are constructed entirely of grass and bamboo... Sleeping mats are the only floor covering,*





The Geisha district in Naha (TSUJI MATCHI) reportedly had 8000 girls. Most of the Okinawan Geishas came from the backward Jizuza district and were sold into prostitution by their shiftless peasant fathers. 'Respectable' women dislike the Geisha system and will not associate with Geishas...



Okinawans remove their footwear before entering the home. There are few or no chairs and no Western style beds—the mat covered floor, serving as sitting and sleeping space... At meal time or tea serving, a small table is brought into the living room...



Here are some popular feminine names and their meanings:

Yasuko .... take it easy  
Tomiko .... rich girl  
Sachiko .... happy  
Meetsuko .... sunshine



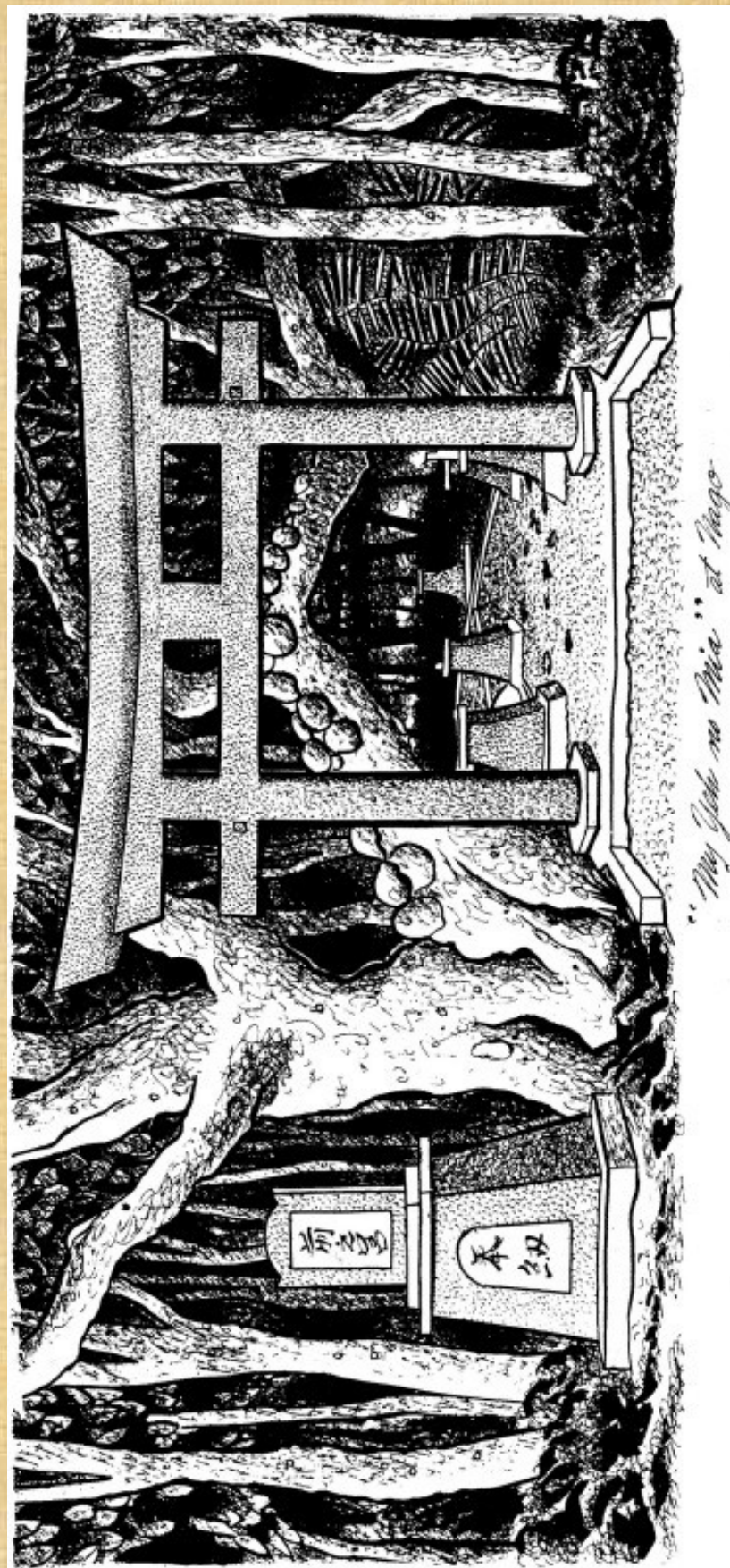
On the farms, women do most of the hard work.



IT IS BELIEVED THAT THE LARGE FORMAT SKETCHES THAT WERE PUBLISHED IN THE 1ST AIR DIVISION BOOK ARE PART OF IRWIN'S "OKINAWAN SKETCH BOOK SERIES"







“My Gosh no Mia” at Nagao







