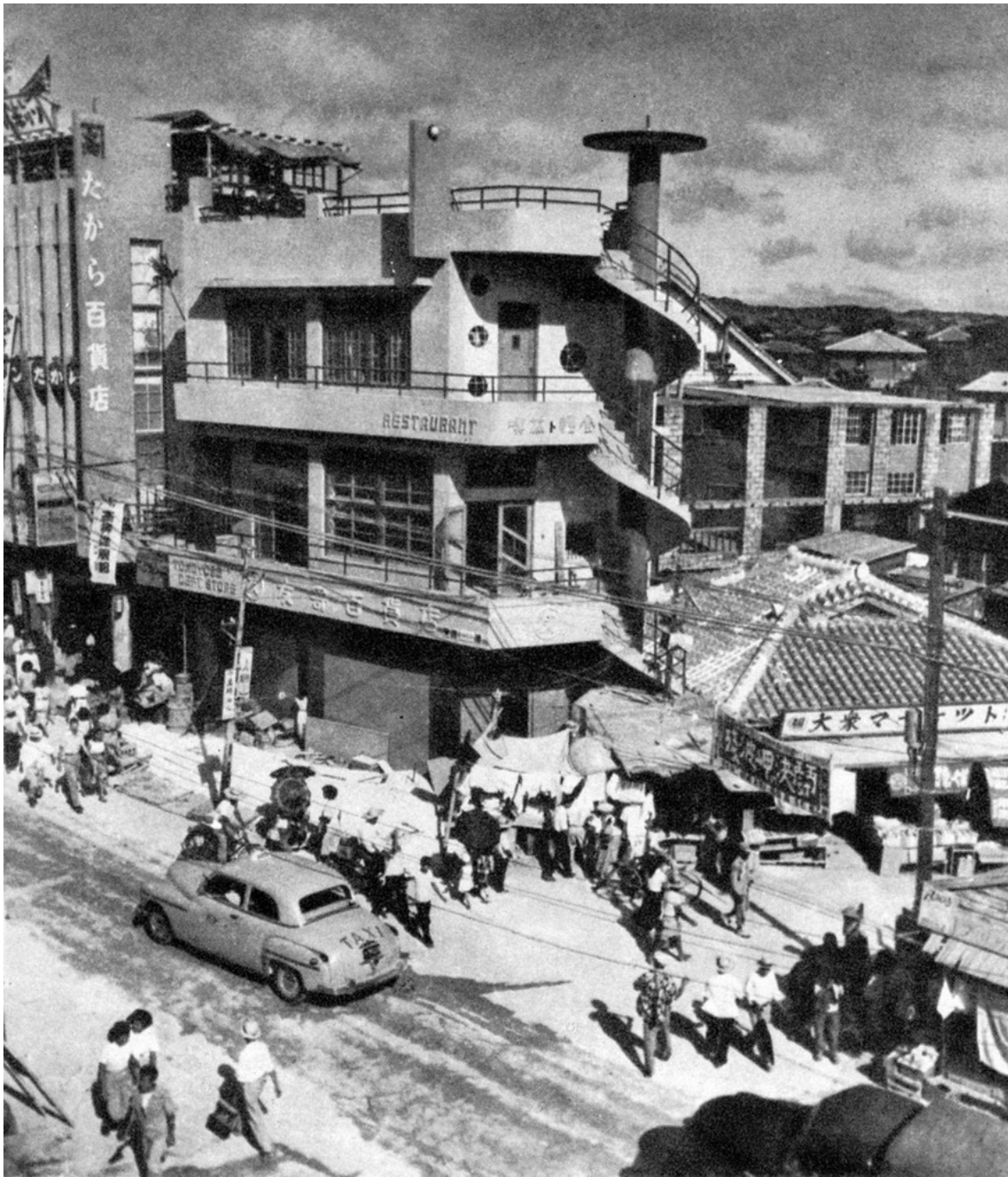


**TOMOYOSE DEPARTMENT STORE - NAHA, OKINAWA
CORNER OF KOKUSAI DORI AND HEIWA DORI (BLACK MARKET ALLEY)**



**PHOTO FROM 1954 PUBLICATION
"KICHI OKINAWA: AN ISLAND FORTRESS"
ACTUAL DATE OF THE PHOTO IS UNKNOWN BUT THE 4TH FLOOR
CONSTRUCTION THAT IS VISIBLE IN THE OTHER PHOTOS HAS NOT
BEEN COMPLETED YET AND THE REST OF THE BUILDING LOOKS LIKE
IT IS NOT QUITE FINISHED.**

**COPYRIGHT © 2010 DONN E. CUSON
REVISED 6 JULY 2010**



CA 1954
"OKINAWA IN PICTURES"



POSTCARD - THE SIGN ON THE TOP OF THE BUILDING SAYS
"NEW BEER HALL MARUTOMO"



POSTCARD SHOWING THE CORNER OF KOKUSAI DORI AND HEIWA DORI (BLACK MARKET ALLEY) TOMOYOSE DEPARTMENT STORE ON THE LEFT



THE SIGN ON THE RIGHT ADVERTISING A CINEMASCOPE MOVIE WOULD DATE THE PHOTO TO 1953 OR LATER, CINEMASCOPE STARTED IN 1953 IN THE USA AND PROBABLY DID NOT ARRIVE IN OKINAWA UNTIL 1954.



**313TH AIR DIV BOOK PUBLISHED 1955-56
NOTE THE LOCATION OF THE "COKE" SIGN COMPARED TO ITS
LOCATION IN THE PAGE 2 PHOTOS.**



**COLOR POSTCARD - NOTE THE ADDITION OF THE PEPSI SIGN BELOW THE
COKE SIGN**



**PHOTO FROM
SHIN KYODO CHIZU, OKINAWA (NEW MAPS OF THE NATIVE LAND, OKINAWA)
PUBLISHED IN APRIL 1957 BY THE OKINAWA TIMES
PHOTO WAS TAKEN IN 1956**



1956 DATED GI PHOTO - NOTE THE ADDITION OF A 7UP SIGN NEXT TO THE PEPSI SIGN



1956 DATED GI PHOTO - SHOWS A CLOSE UP VIEW OF THE TOMOYOSE SIGN



1956 DATED GI PHOTO - TOMOYOSE DEPARTMENT STORE ON THE LEFT CORNER OF KOKUSAI DORI AND HEIWA DORI (BLACK MARKET ALLEY)



**1961
“OKINAWA” CALENDAR BOOK
BY BLACKIE THE PHOTOGRAPHER
NOTE MAJOR CHANGE IN THE 4TH FLOOR**

1958年 那覇市 国際通り／金城棟永
大越デパート前。
当時、自動車は右側通行で本土とは反対だった。



**1958 PHOTO FROM THE BOOK
OKINAWA PHOTOGRAPHS 1953-1972
PUBLISHED IN 2006**