

TOKI VILLAGE
POPULAR DESTINATION FOR EARLY POSTWAR PHOTOGRAPHERS ON
OKINAWA, LOCATED ON THE EAST COAST OF OKINAWA ON RT 331,
BETWEEN RT 329 AND RT 18



4-9

TYPICAL OKINAWA SCENERY

**EARLIEST KNOWN PHOTOGRAPH OF THIS LOCATION IS A “GROGAN PHOTO CO.,
DANVILLE, ILLINOIS” REAL PHOTO POSTCARD THAT WAS MADE USING “OFFICIAL
U.S. MARINE PHOTOS” THAT WERE BELIEVED TO HAVE BEEN TAKEN IN LATE 1945.**
MAP LOCATION 5

**SEE PAGE 13 FOR MAP SHOWING ESTIMATED LOCATIONS
THAT VARIOUS PHOTOS WERE TAKEN FROM.**

REVISED 17 NOV 2011

COPYRIGHT© 2008-2011 DONN E. CUSON



3. VILLAGE OF TOKI
Called "Happy Valley," nestling in a beautiful, green valley of farmland. Was not attacked.

1945-46

PHOTO AND DESCRIPTION FROM AN ALBUM OF OKINAWA PHOTOS PRODUCED AND SOLD BY BEN F. GROGG - FORMER NAVY PHOTOGRAPHERS MATE STATIONED ON OKINAWA

MAP LOCATION 1



4. THATCHED DWELLINGS—TOKI

Farmers huts use thatch during war in order to save tile roofs which are buried for safekeeping. Not attacked.

1945-46

PHOTO AND DESCRIPTION FROM AN ALBUM OF OKINAWA PHOTOS PRODUCED AND SOLD BY BEN F. GROGG - FORMER NAVY PHOTOGRAPHERS MATE STATIONED ON OKINAWA

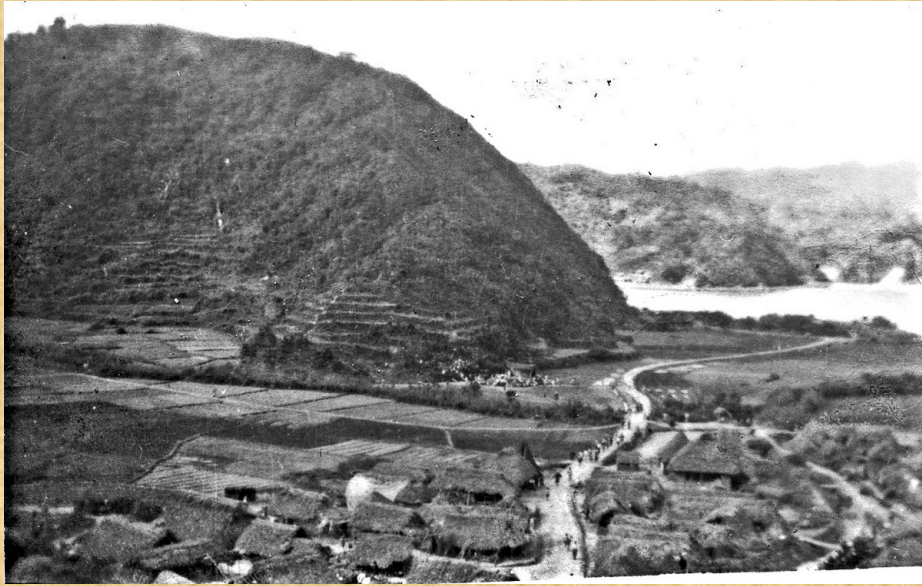


1945-46 GI PHOTO MAP LOCATION 2



1945-46 GI PHOTO MAP LOCATION 6

1946 PHOTOS FROM 156TH STATION HOSPITAL AT KADENA SCRAPBOOK





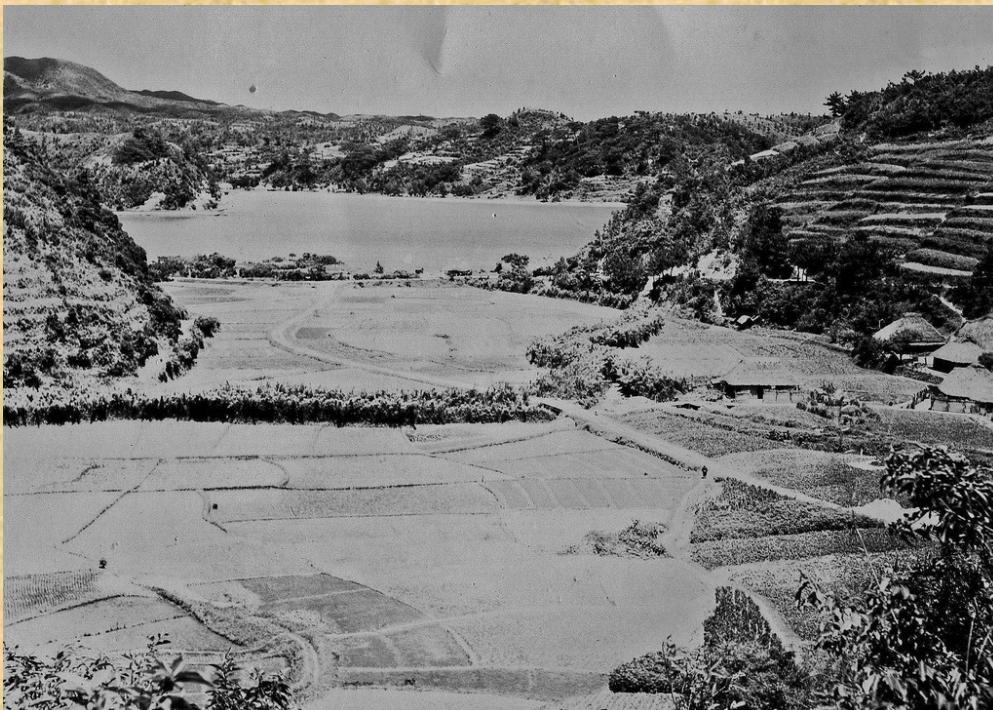
**ORIGINAL PHOTOS OBTAINED WITH COLLECTION OF PHOTOS USED TO PRODUCE
“1ST AIR DIVISION - OKINAWA” BOOK PUBLISHED IN 1947.
MAP LOCATION 5**

BOTTOM PHOTO MAP LOCATION 1

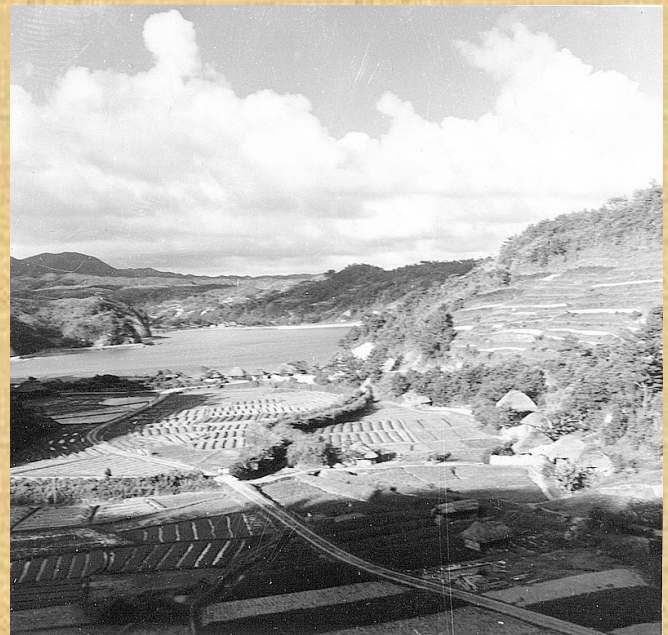
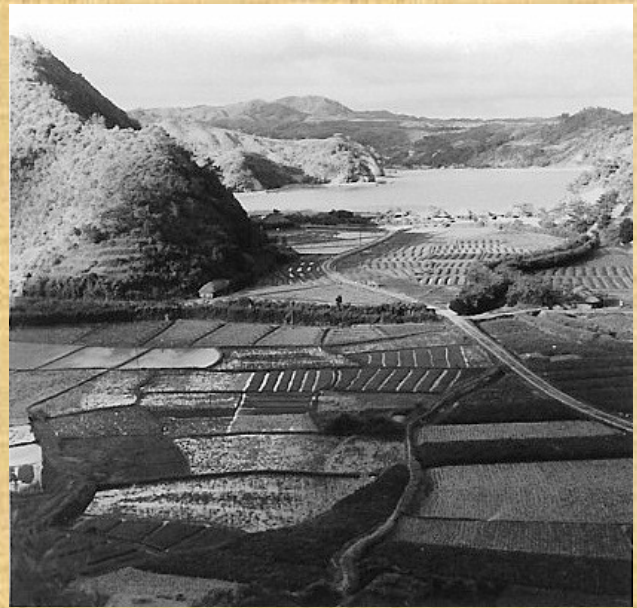
**HAND WRITTEN NOTE ON BACK OF THE BOTTOM PHOTO SAYS “ON THE NORTH END
OF THE ISLAND”**



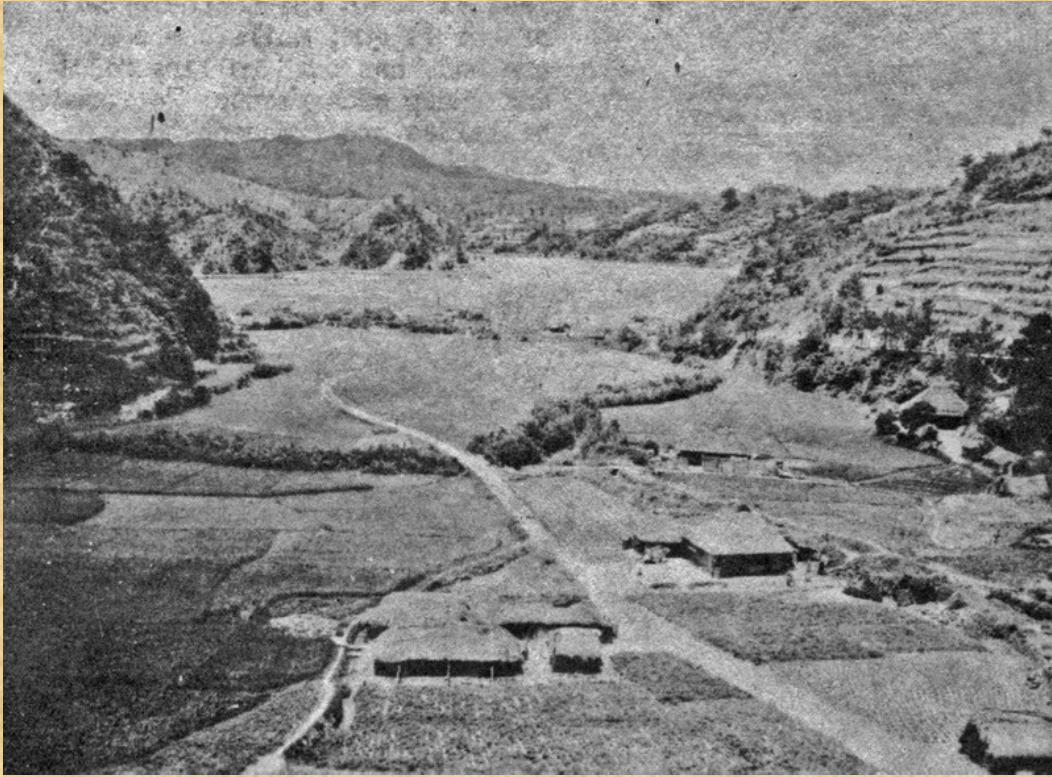
**PHOTOGRAPHIC INTERPRETATION SQUADRON ONE - OKINAWA
PHOTO TAKEN PRIOR TO OCT 1945**



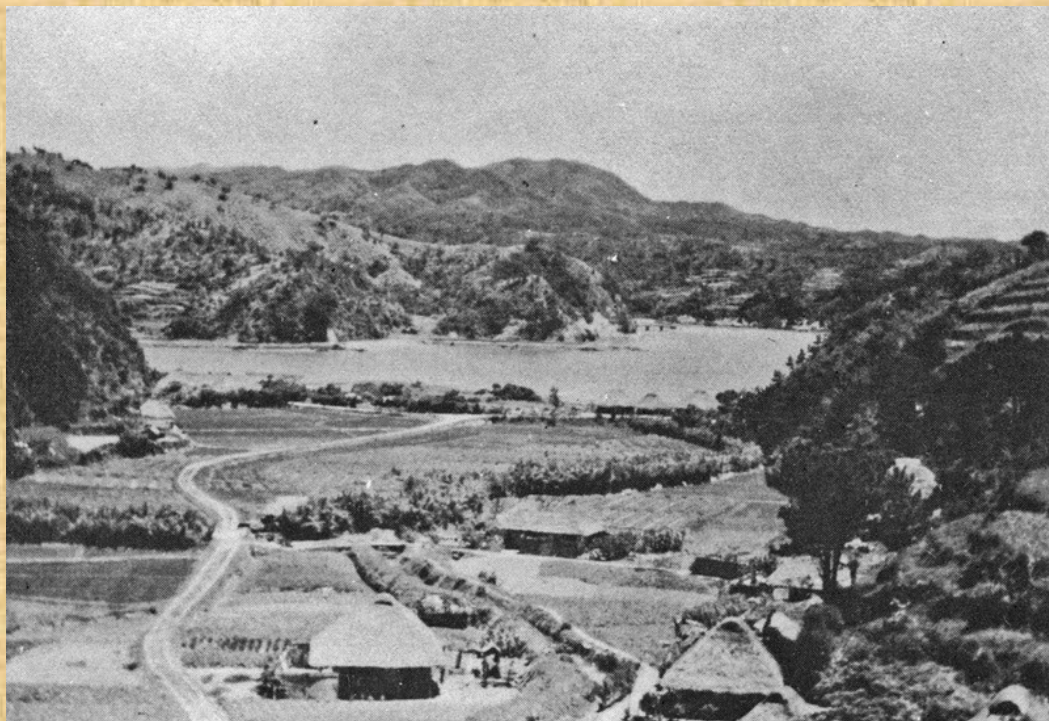
**OKINAWA HOME OF THE 1ST AIR DIVISION
1947**



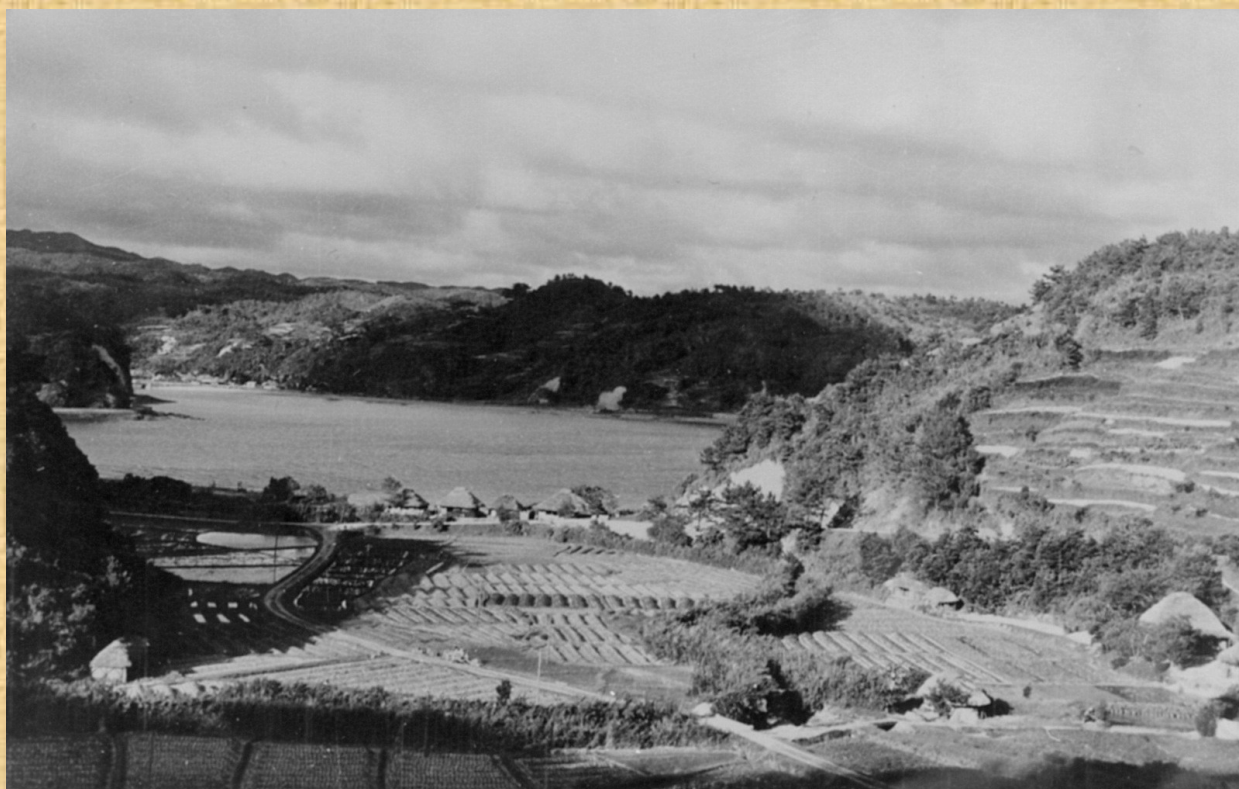
**PHOTOS FROM MOSHER-REID PHOTO SERVICE BOOKLETS THOUGHT TO HAVE
BEEN SOLD ON OKINAWA IN THE EARLY 1950'S
MAP LOCATION 4 OR 5**



1947 "1ST AIR DIVISION" BOOK BY ROBERT MERRITT
MAP LOCATION 5



1951 "OKINAWA ISLE OF SMILES" BOOK BY WILLIAM JENKINS
MAP LOCATION 5



**MID 1950'S BLACK & WHITE POSTCARDS
MAY BE FROM ORIGINAL PHOTOS SHOT IN THE LATE 1940'S
MAP LOCATION 4**



1954 "OKINAWA IN PICTURES" BOOK BY BLACKIE THE PHOTOGRAPHER
MAP LOCATION 3



POSTCARD, SAME AS TOP PICTURE, BUT FROM A SLIGHTLY DIFFERENT
LOCATION ON THE ORIGINAL NEGATIVE. BACK OF POSTCARD IS
STAMPED "OKINAWA FARMING SCENE"
MAP LOCATION 3



**1962 “OKINAWA CHILDREN IN PHOTOS” BOOK BY BLACKIE THE PHOTOGRAPHER
MAP LOCATION 2**



**BLACKIE THE PHOTOGRAPHER 4 X 5 PHOTO
MATCHES THE BOOK PHOTO ABOVE BUT SHOWS A LITTLE MORE AREA**



POSTCARD BELIEVED TO BE FROM LATE 40'S OR EARLY 50'S SHOWING SAME VILLAGE BUT FROM DIFFERENT ANGLE.

MAP LOCATION 1

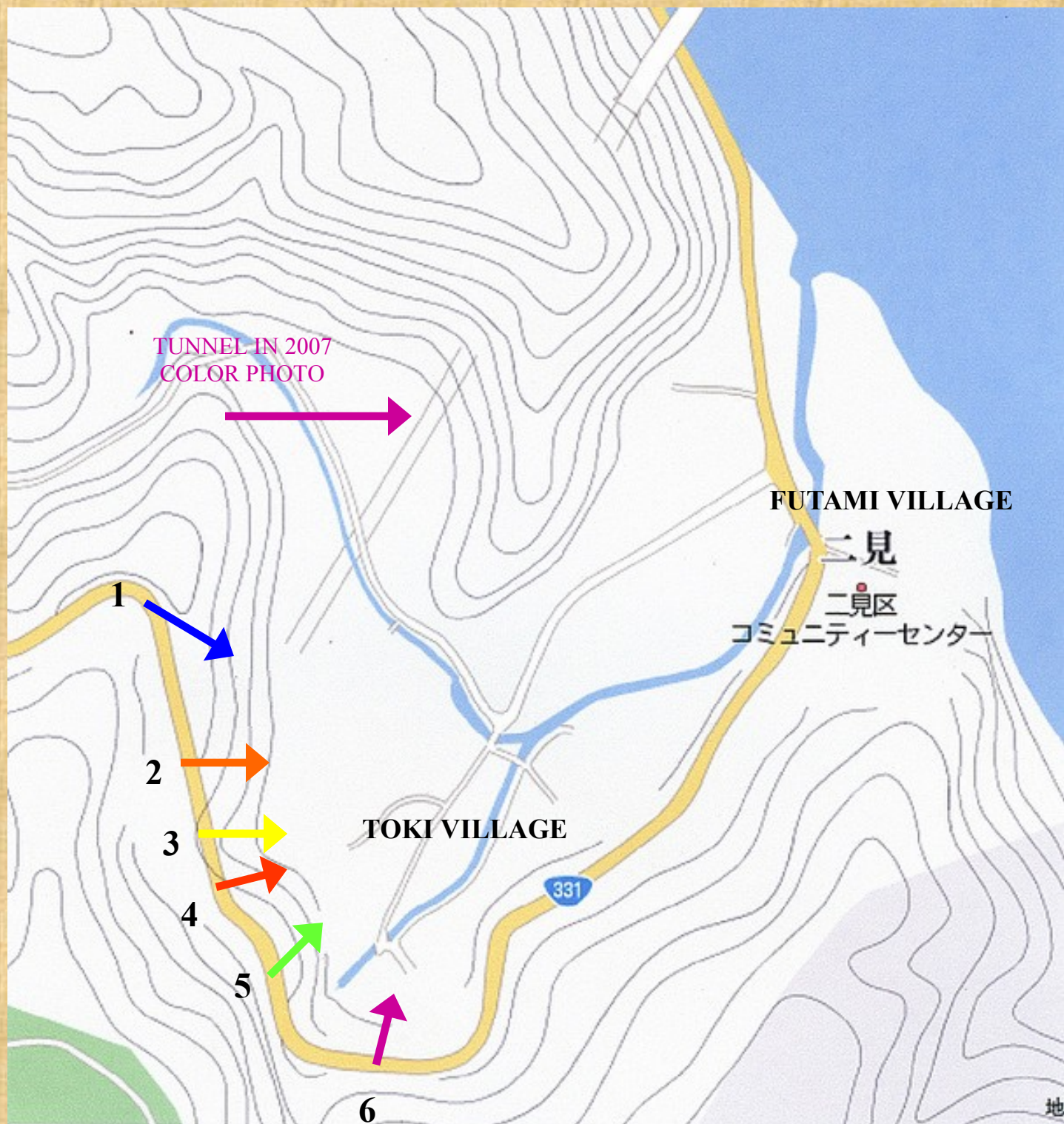


COLOR PHOTO OF TOKI VILLAGE FOUND ON INTERNET.

DATE OF PHOTO IS 2007

LOCATED NORTH OF CAMP SCHWAB ON ROUTE 331, EAST OF RT 329.

MAP LOCATION 6



**ESTIMATED LOCATIONS ON THE ROAD THAT VARIOUS PHOTOS
WERE TAKEN. SEE PHOTOS FOR MAP LOCATION NUMBER.**

