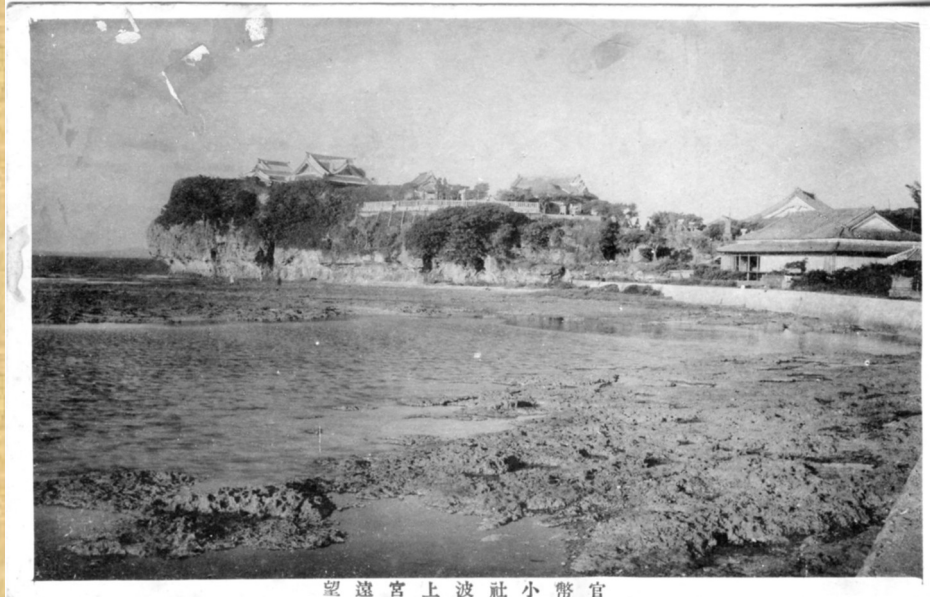


**NAMINOUE OR OVER THE WAVES SHRINE
NAHA, OKINAWA, RYUKYU ISLANDS
1945 TO 1966**



望遠宮上波社小幣官

PRE-WAR NAMINOUE POSTCARD



74th USNCB Neg. No. none July 1945
Okinawan shrine, Naha

EARLIEST DATED PHOTO KNOWN TO DATE

REVISED 6 SEPT. 2013

COPYRIGHT © 2007 - 2013 DONN E. CUSON



**1ST RECONNAISSANCE SQUADRON PHOTO
DATED 15 OCTOBER 1945**



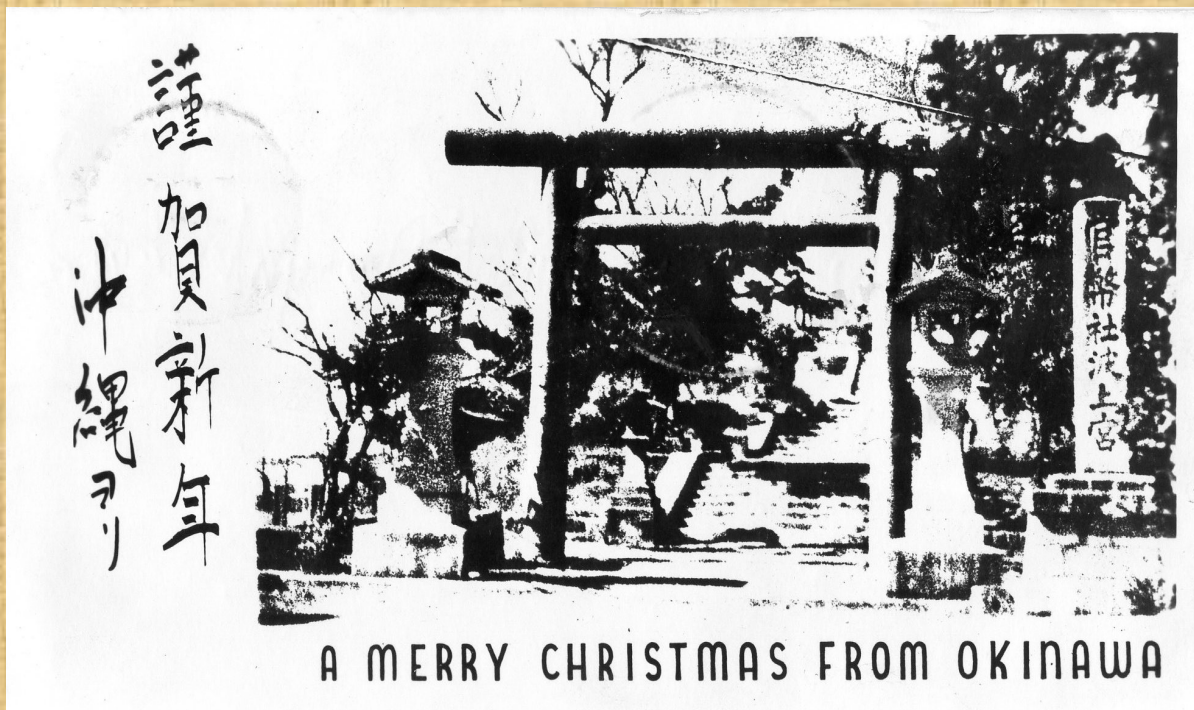
**LATEST DATED PHOTO SHOWING TREE IN FRONT OF THE LEFT HAND PAGODA.
JAN. 1946 ON BACK OF THE PHOTO**



ORIGINAL G.I. PHOTO TAKEN PROBABLY BETWEEN JULY 1945 AND JAN. 1946. NOTE THE TREE IN FRONT OF THE LEFT PAGODA.

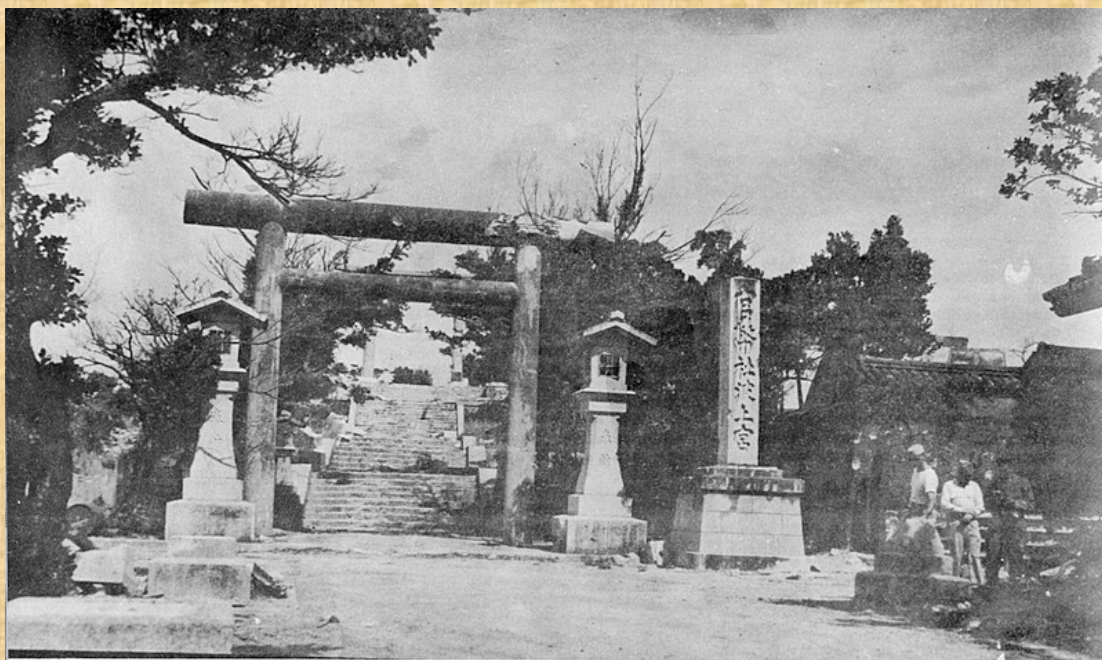


ORIGINAL G.I. PHOTO TAKEN PROBABLY BETWEEN JULY 1945 AND JAN. 1946. NOTE THE TREE IN FRONT OF THE LEFT PAGODA.



CHRISTMAS CARD

NOTE THE TREE IN FRONT OF THE LEFT PAGODA IS VISIBLE WHICH DATES THE PHOTO TO PRIOR TO JAN. 1946.



Rui, of Naha's once beautiful Ono Yama Park which housed two Shinto shrines - Gokoku Jinja (Keep Our Nation), in the foreground and Namino oo Yeh Jinja (Shinto by the Sea), in the background

OKINAWA MEMORIES - NAVAL SUPPLY DEPOT BOOKLET - 1946

THE PHOTO WAS TAKEN PRIOR TO JAN. 1946, NOTE THE TREE IN FRONT OF THE LEFT PAGODA.



Holiday Greetings







**PHOTO FROM PHOTOGRAPHIC INTERPRETATION SQUADRON ONE - OKINAWA
BOOK, PUBLISHED IN OCT 1945.
NOTE TREE IN FRONT OF LEFT HAND PAGODA**



**1946
AFTER JAN. 1946**





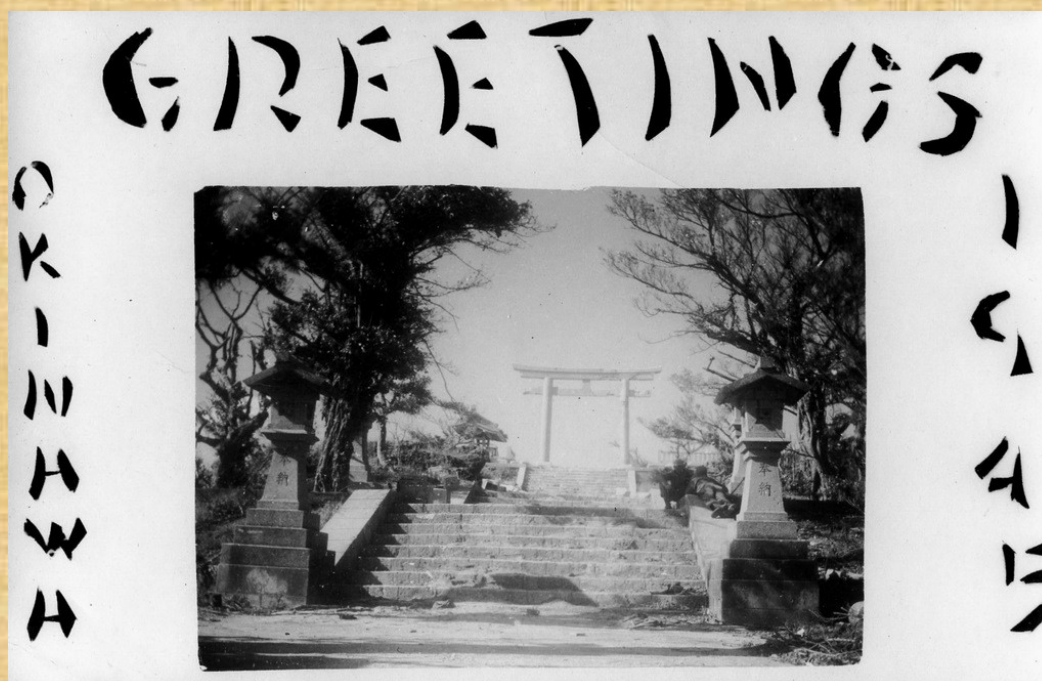


STEPS TO SHINTO SHRINE, NAHA, OKINAWA

179

GROGAN PHOTO CO., DANVILLE, IL
POSTCARD

THE DATE OF THE PHOTO USED FOR THIS POSTCARD IS AFTER JAN. 1946, NOTE
THAT THE TREE IN FRONT OF THE LEFT PAGODA HAS BEEN CUT DOWN,



1945 CHRISTMAS CARD



**96TH INFANTRY DIVISION PHOTOS 1946
RYUKYU AMERICAN HISTORICAL RESEARCH SOCIETY**



PANORAMA PRODUCED FROM THE 3 PHOTOS THAT FOLLOW













1947 CHRISTMAS CARD FROM OKINAWA



DATED 2 DEC 1948 ON BACK

**FIRST EVIDENCE OF RESTORATION WORK, THE TREES
AND VEGETATION HAVE BEEN CUT BACK.**





1950 POSTCARD



YOUR RYUKYUS VISIT

1952 CONGRESSIONAL VISIT BOOKLET
SIGNED BY CLYDE DOYLE, REPRESENTATIVE FROM CALIFORNIA



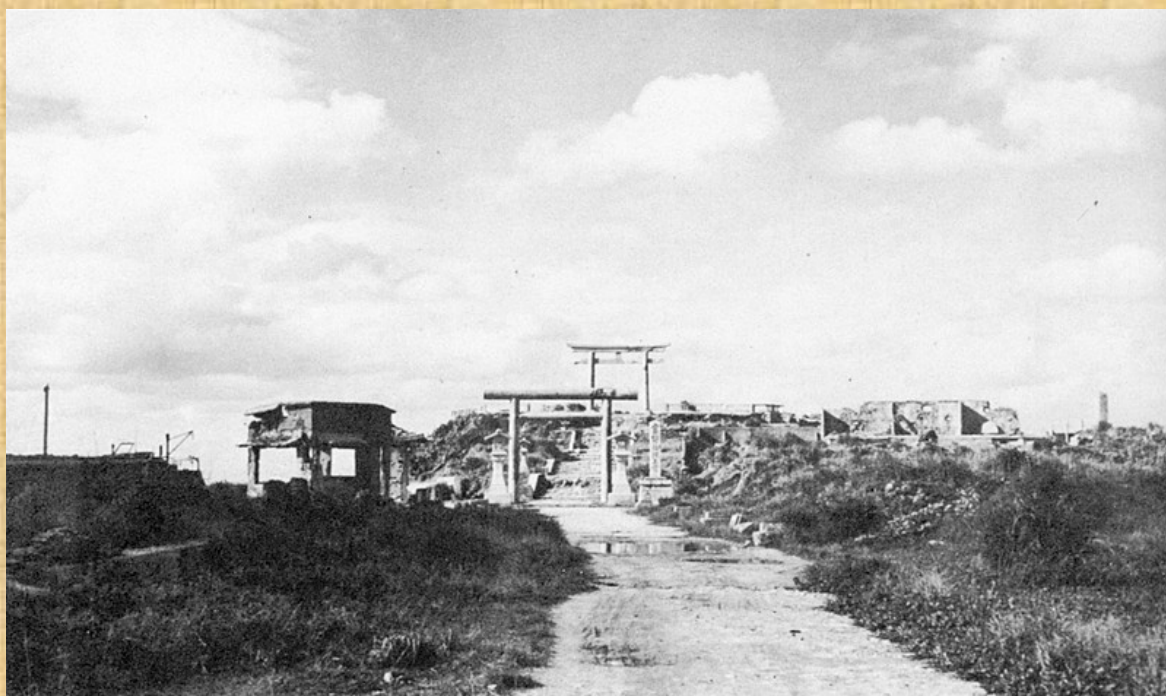
**PHOTOS FROM "OKINAWA ISLE OF SMILES" BY WILLIAM JENKINS
PUBLISHED 1951**

現在の波上宮——弾痕のある鳥居。崩れ残った壁。それらのものが蒼穹に喰い入っている。——これが現在の波上宮の姿である。

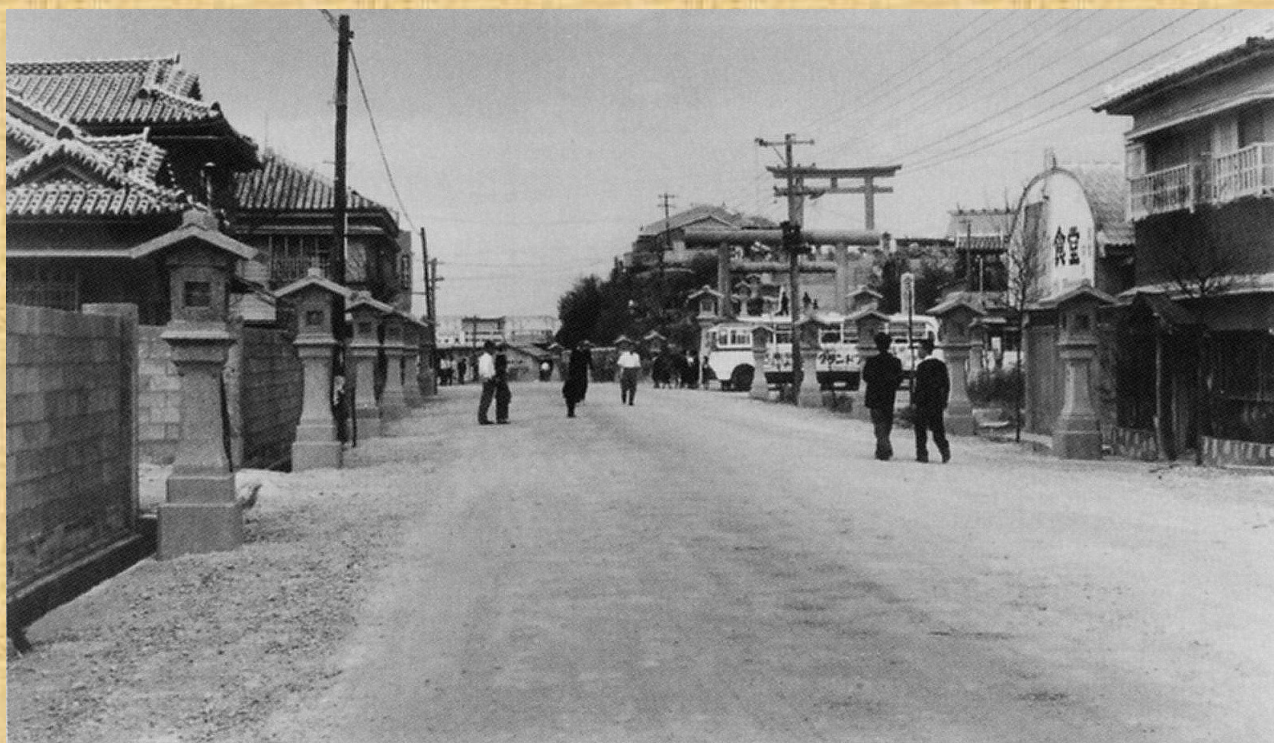


NAMINOUE SHRINE, as it looks today with its nudity symbolized by the damaged Torii (gate) and ruins of the buildings silhouetted against the sky-line.

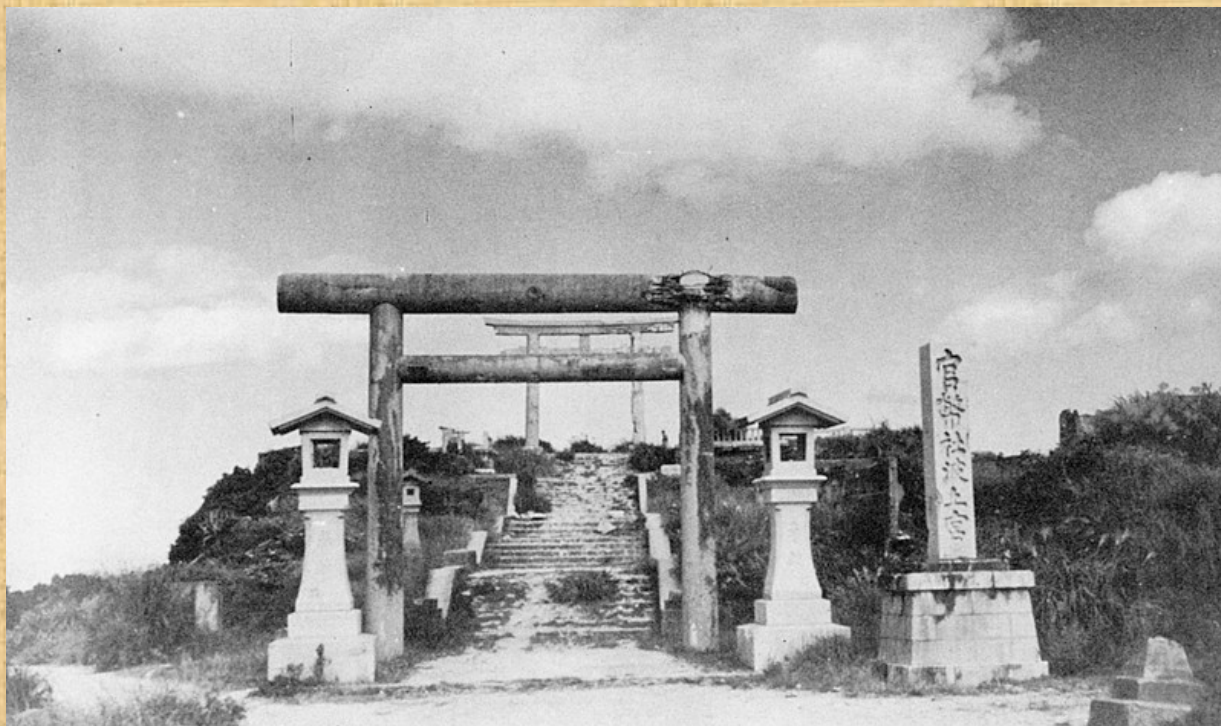
**PICTORIAL OKINAWA
PUBLISHED 1951**



**“PICTURES OF OKINAWA” BY BLACKIE THE PHOTOGRAPHER
PUBLISHED CA 1953**



1959
COMPARE TO THE PHOTOS ON PREVIOUS PAGE
PHOTO FROM "OKINAWA PHOTOGRAPHS 1953-1972"
PUBLISHED IN 2006



**“PICTURES OF OKINAWA” BY BLACKIE THE PHOTOGRAPHER
PUBLISHED CA 1953**



**“BLACKIE’S BEST PHOTOS” BY BLACKIE THE PHOTOGRAPHER
PUBLISHED CA 1953**



1955 KODACHROME SLIDE



POSTMARKED 1956 POSTCARD



**PHOTO FROM
SHIN KYODO CHIZU, OKINAWA (NEW MAPS OF THE NATIVE LAND, OKINAWA)
PUBLISHED IN APRIL 1957 BY THE OKINAWA TIMES
PHOTO WAS TAKEN IN 1956**

THIS PHOTO IS VERY ACCURATE AS TO DATE. THIS SHOWS THE NEW RESTORED FIRST TORII GATE, WITH THE CENTER VERTICAL BAR BETWEEN THE TWO HORIZONTAL BARS. BASED ON THE FACT THAT THE OKINAWA TIMES BOOK WAS PUBLISHED IN APRIL 1957 AND DATA IN THE BOOK INDICATED THAT THE PHOTOS WERE TAKEN IN 1956 THAT WOULD MAKE THE 1958 DATE ON THE TOP PHOTO ON THE NEXT PAGE INCORRECT..



1958年 那覇市 波之上／山田實
戦災で損傷した波之上宮の鳥居。

1958
PHOTO FROM "OKINAWA PHOTOGRAPHS 1953-1972"
PUBLISHED IN 2006



1958
PHOTO FROM "OKINAWA PHOTOGRAPHS 1953-1972"
PUBLISHED IN 2006



1957
PHOTO FROM “OKINAWA ARCHIVES PHOTOGRAPH COLLECTION”
PUBLISHED IN 2006



OKINAWAN CHILDREN IN PHOTOS BY BLACKIE THE PHOTOGRAPHER
PUBLISHED CA 1962



**“A LOOK AT OKINAWA” CALENDAR MEMO BOOK
1964**



Naminoue Shrine

Only one government-managed shrine that enshrine the gods named Izanagi, Hayatamao, Kotosakao. We have a big festival on the 17th. May. Evening view is wonderful from its garden, which is the best place for rambling.

ナミノウエ
波上宮

唯一の官幣社で伊弉諾

ミコト ハヤタマオノミコト コトサカオノ
尊、速玉男尊、事解男

ミコト
尊を奉祀し、5月17

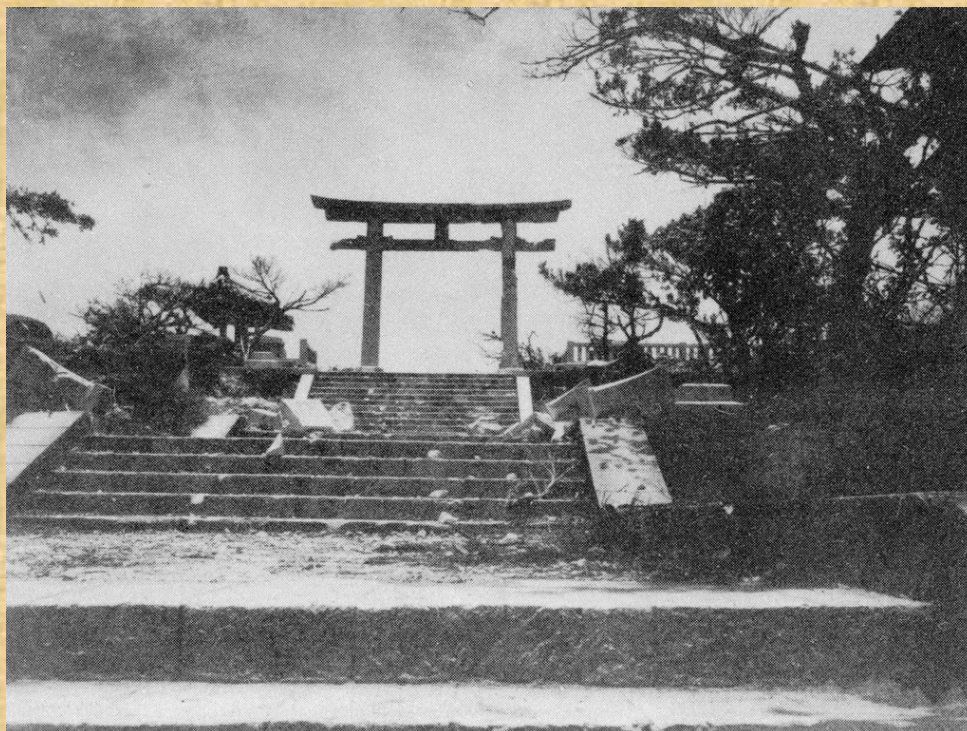
日を祭日として盛大な
例祭が行なわれる。又、
境内から眺める夕景が
素晴しく散策地として
絶好の場所である。

**“OKINAWA ALBUM” BOOKLET
1965**

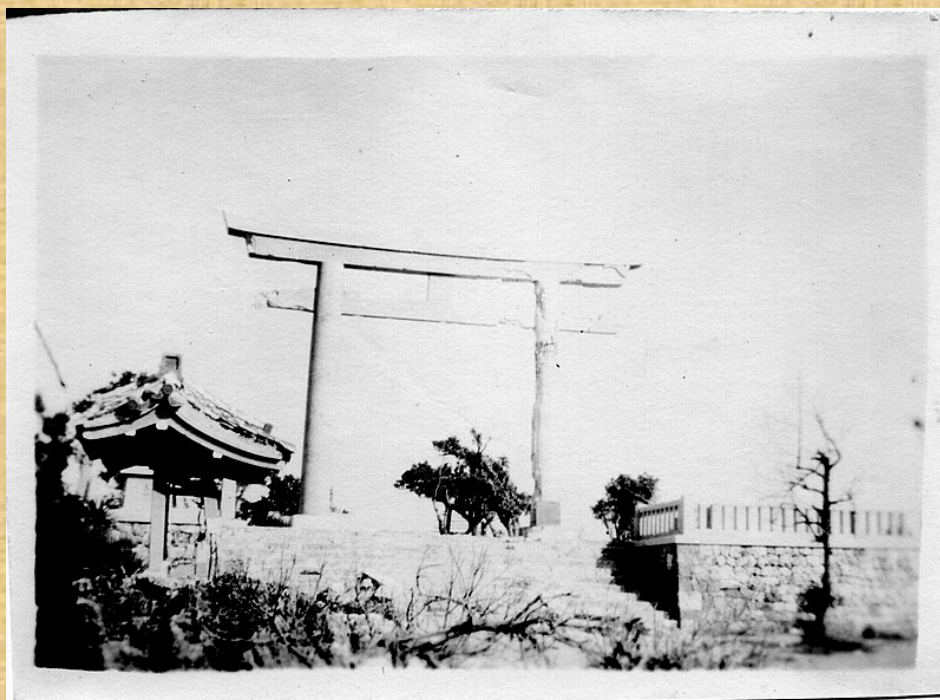




**GROGAN PHOTO CO., DANVILLE, IL
POSTCARD
PHOTO TAKEN IN LATER 1945 - EARLY 1946**



**PHOTO FROM THE BOOK
5223RD ENGINEER CONSTRUCTION BRIGADE - OKINAWA
PUBLISHED IN 1945**

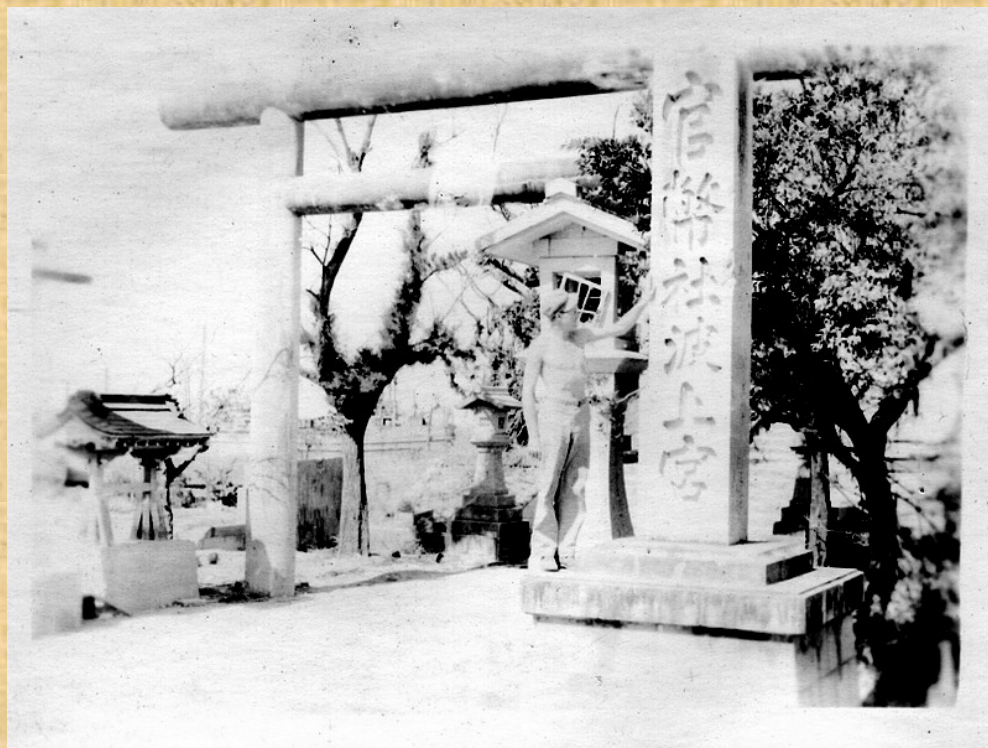


ORIGINAL G.I. PHOTO TAKEN IN 1945-46



**POSTCARD
"1945 SHRINE" WRITTEN ON BACK**





ORIGINAL G.I. PHOTO TAKEN IN 1945



**MOSHER-REID PHOTO BOOKLET
LATE 1940'S TO EARLY 1950'S**



**MOSHER-REID PHOTO BOOKLET
LATE 1940'S TO EARLY 1950'S**



**PHOTO FROM "1ST AIR DIVISION" BOOK
PUBLISHED IN 1947**



1945-46
THIS MONTH ON OKINAWA
APRIL 1960



1945 G.I. PHOTO



1948
 PHOTO FROM "OKINAWA ARCHIVES PHOTOGRAPH COLLECTION"
 PUBLISHED IN 2006



1950 POSTCARD

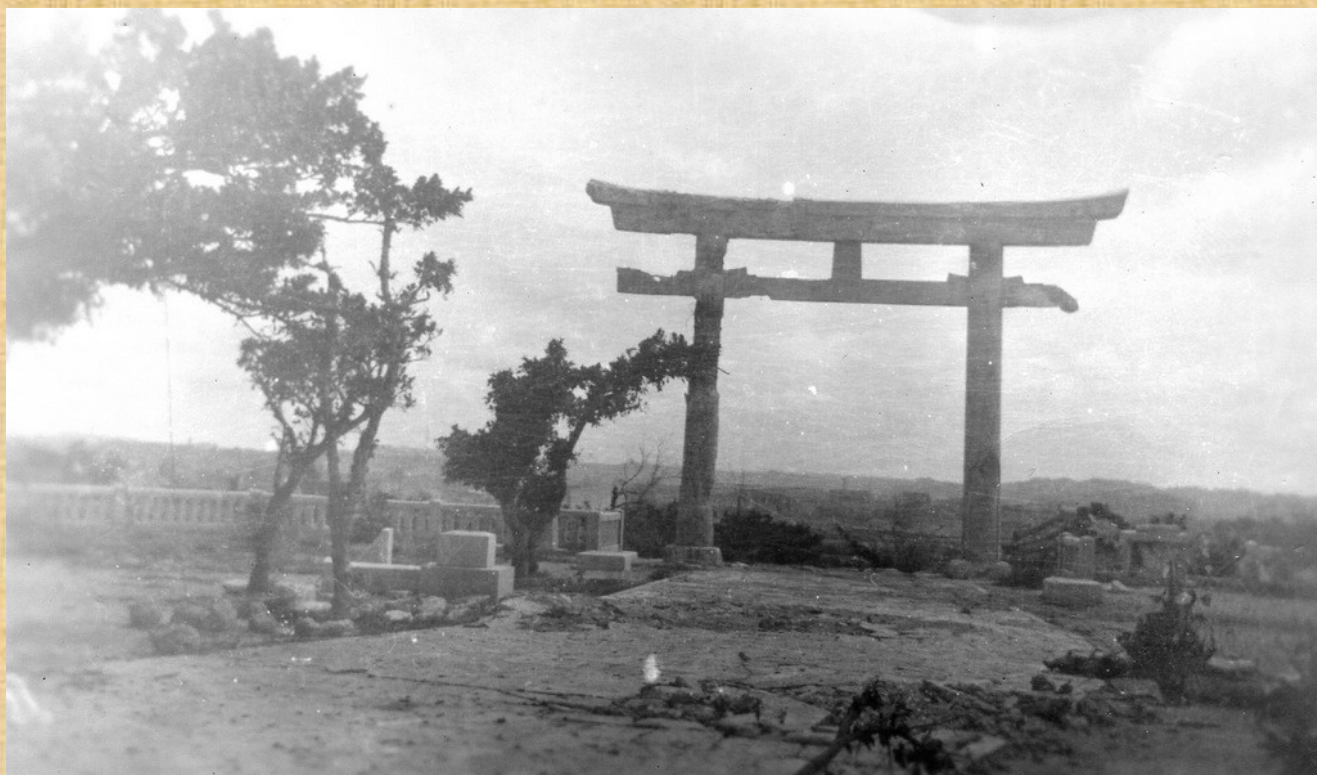




PHOTO FROM "KICHI OKINAWA" PUBLISHED BY THE OKINAWA TIMES IN NOV. 1954. PHOTO WAS PROBABLY BETWEEN 1949 AND 1952

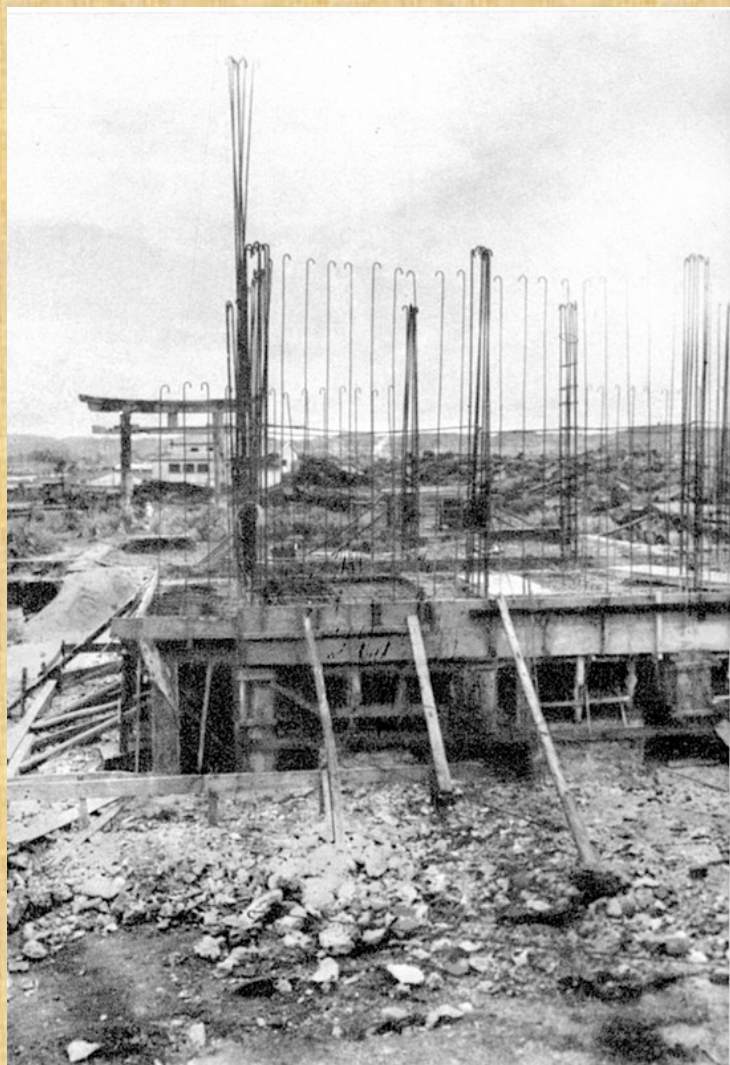


PHOTO FROM "KICHI OKINAWA" PUBLISHED BY THE OKINAWA TIMES IN NOV. 1954 SHOWING CONSTRUCTION OF THE SHRINE BEHIND THE TORII GATE. PHOTO WAS PROBABLY BETWEEN 1952 AND 53.



**NAHA AIR BASE WELCOME GUIDE
1957**



1958 KODACHROME SLIDE



1960年 那覇市 波之上／金城棟永
波之上宮の上から辻町方面を撮った1枚。
右端にやぎ写真館、料亭松の下が見える。

PHOTO FROM "OKINAWA PHOTOGRAPHS 1953-1972"
PUBLISHED IN 2006



GROGAN PHOTO CO., DANVILLE, IL
POSTCARD
PHOTO TAKEN IN LATER 1945



1947 OKINAWA HOME OF THE 1ST AIR DIVISION



1947 OKINAWA HOME OF THE 1ST AIR DIVISION



**PHOTOGRAPHIC INTERPRETATION SQUADRON ONE - OKINAWA
1945**



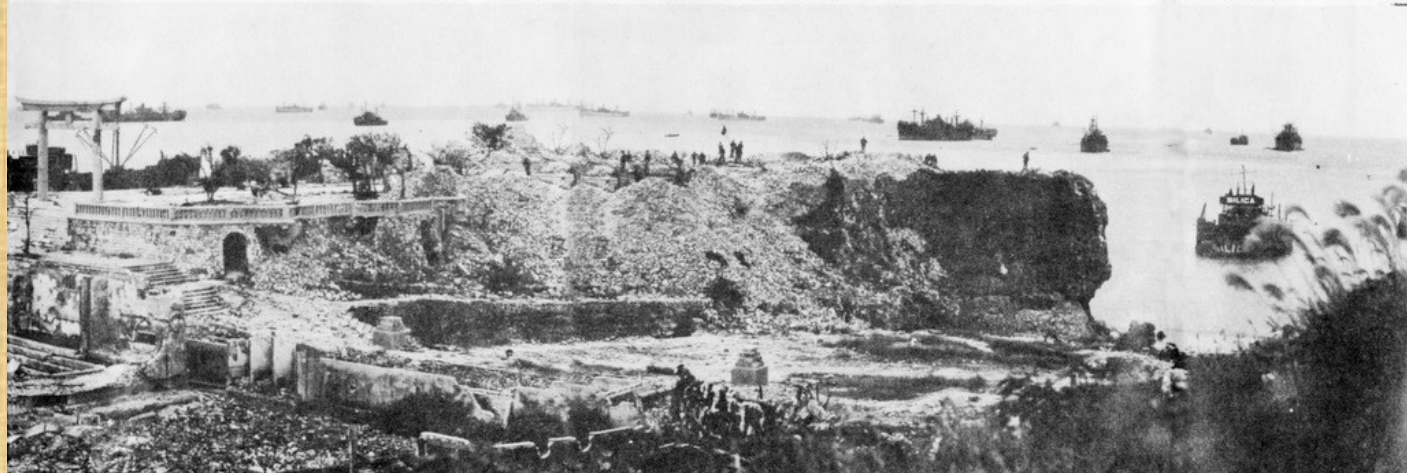


1945-46 PANORAMA FROM THE 8TH ARMY AIR FORCE PUBLICATION
SUPER-FORT 28 JAN. 1946

POSTWAR VIEW OF NAHA'S WATERFRONT ----- FORE



GROUND IS SITE OF OKINAWA'S MAIN SHRINE AND TEMPLE





**REAL PHOTO POSTCARD POSTMARKED 1953
"OKINAWAN TORII " HANDSTAMPED ON BACK**



**1ST RECONNAISSANCE SQUADRON PICTURE TAKEN ON 15 OCT 1945 FROM THE
OCEAN LOOKING UP AT NAMINOUE SHRINE**





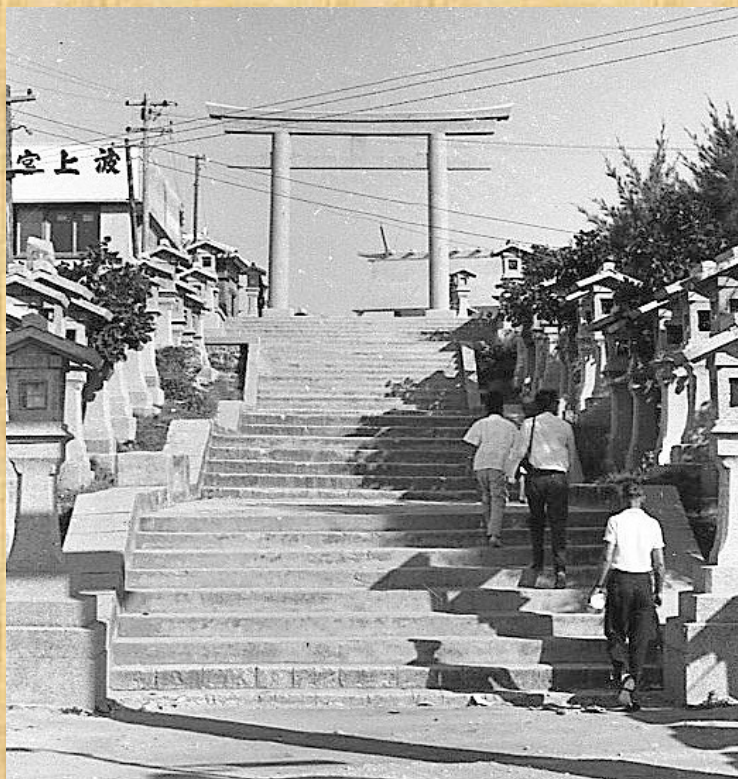




**1ST BATTALION, 7TH MARINES BOOK
1961**



**PHOTO FROM PHOTO PACK OF 15 SOLD BY BLACKIE THE PHOTOGRAPHER.
TEAHOUSE AUGUST MOON DANCERS AT SHRINE, ABOUT 1956/57**



PERSONAL PHOTO TAKEN IN 1966