

KYODA, OKINAWA 1948-1955



TOP TWO PHOTOS ARE FROM A GI STATIONED ON OKINAWA 1948-51



**BERT MOSHER, AMERICAN PHOTO SERVICE POSTCARD
THOUGHT TO BE SOLD IN THE MID 1950'S**



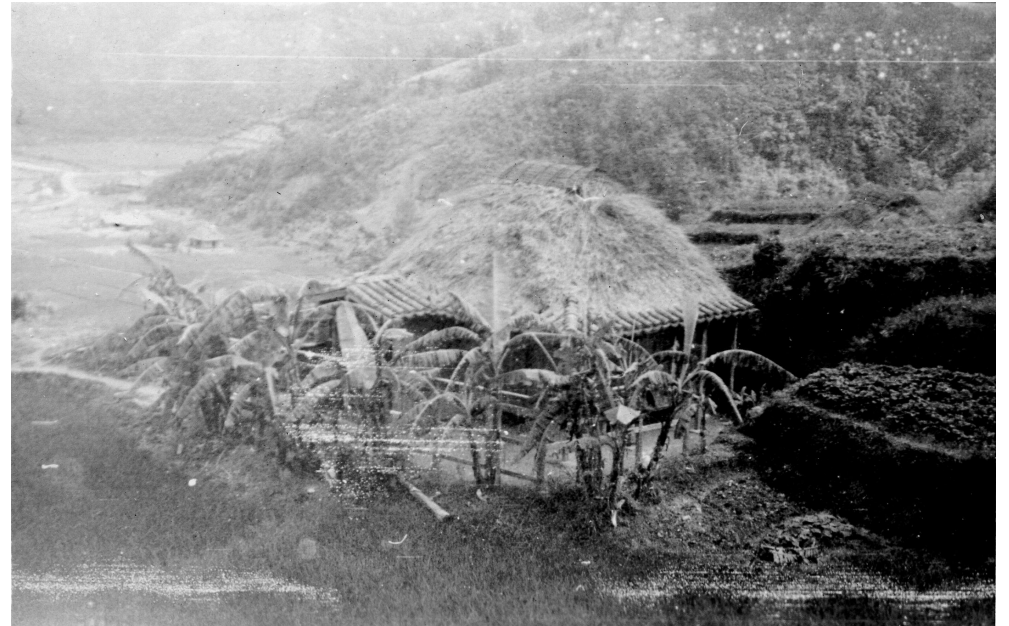
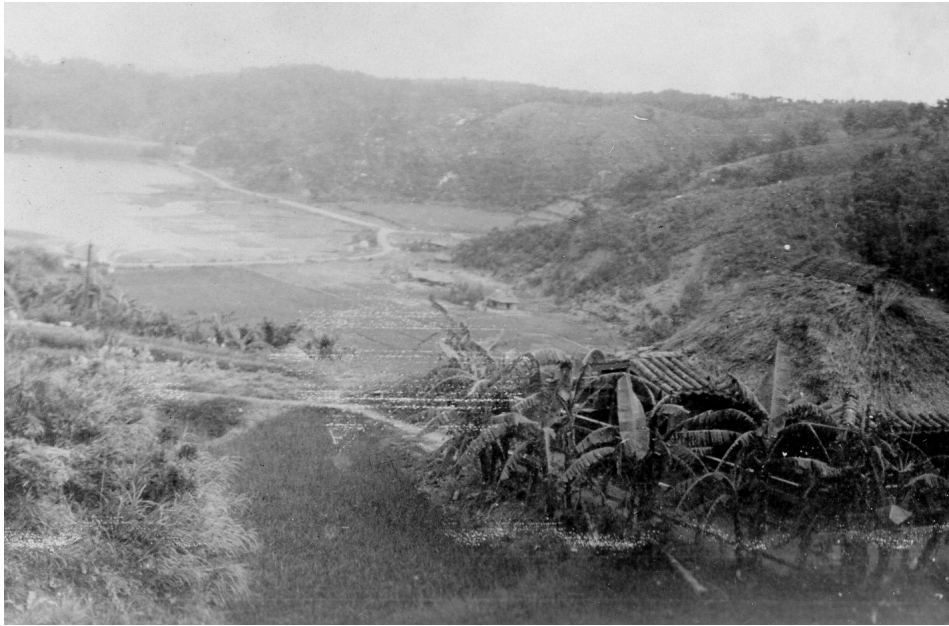
**MOSHER-REID PHOTO SERVICE
BOOKLET PHOTO THOUGHT TO
HAVE BEEN SOLD IN THE EARLY 50'S**

**NOTE THAT IN THIS PHOTO THERE
ARE SOME TILE ROOF HOUSES
WHICH WOULD SEEM TO
INDICATED THAT THIS PHOTO WAS
TAKEN LATER THAN THE
AMERICAN PHOTO SERVICE
POSTCARD PHOTO.**

**THE DATE THAT PHOTOS WERE
ACTUALLY TAKEN IN RELATION TO
WHEN THEY WERE THOUGHT TO
HAVE BEEN SOLD SEEMS TO BE
QUITE A FEW YEARS APART.**

COPYRIGHT©2010 DONN E. CUSON

REVISED 22 JUNE 2010



ADDITIONAL GI PHOTOS OF SAME LOCATION AS PAGE 1 1948-51



1954-55 GI PHOTO

**MORE DISTANT PHOTO OF THE
HOUSES, BUT NOTE THAT THEY
SHOW THE SAME TILE ROOFS AS
THE MOSHER-REID PHOTO ON PAGE**



PANORAMA FROM THE FOUR 1948-51 GI PHOTOS

**KYODA, THE END OF THE EXPRESSWAY FROM NAHA
THE PHOTOGRAPHERS WERE PROBABLY STANDING SOMEPLACE AT OR NEAR THE GOLF COURSE
AND LOOKING TOWARD THE MOTOBU PENINSULA**





KYODA APRIL 2010