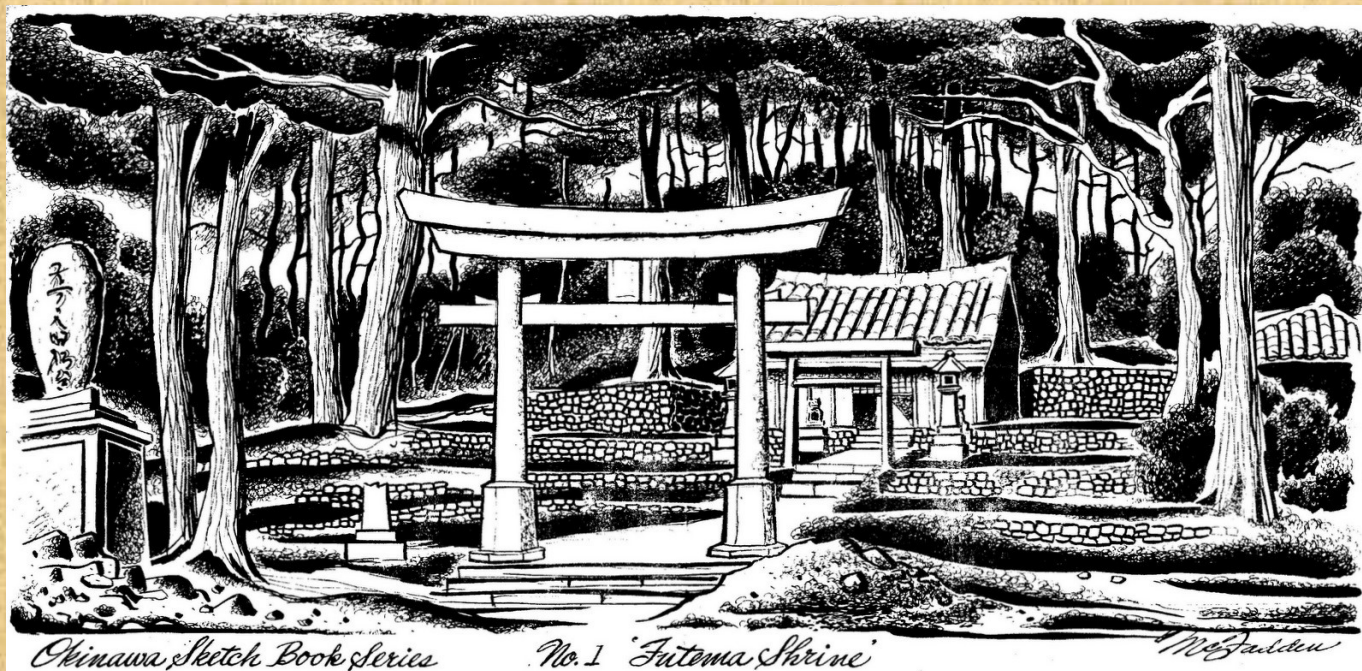


## FUTENMA SHRINE OKINAWA



1945



SKETCH BY IRWIN MCFADDEN, ILLUSTRATOR FOR THE DAILY OKINAWAN  
MILITARY NEWSPAPER. PUBLISHED IN THE 24 MARCH 1946 ISSUE

COPYRIGHT © 2012 DONN E. CUSON  
REVISED 13 SEPT. 2012





1945



1945





1945

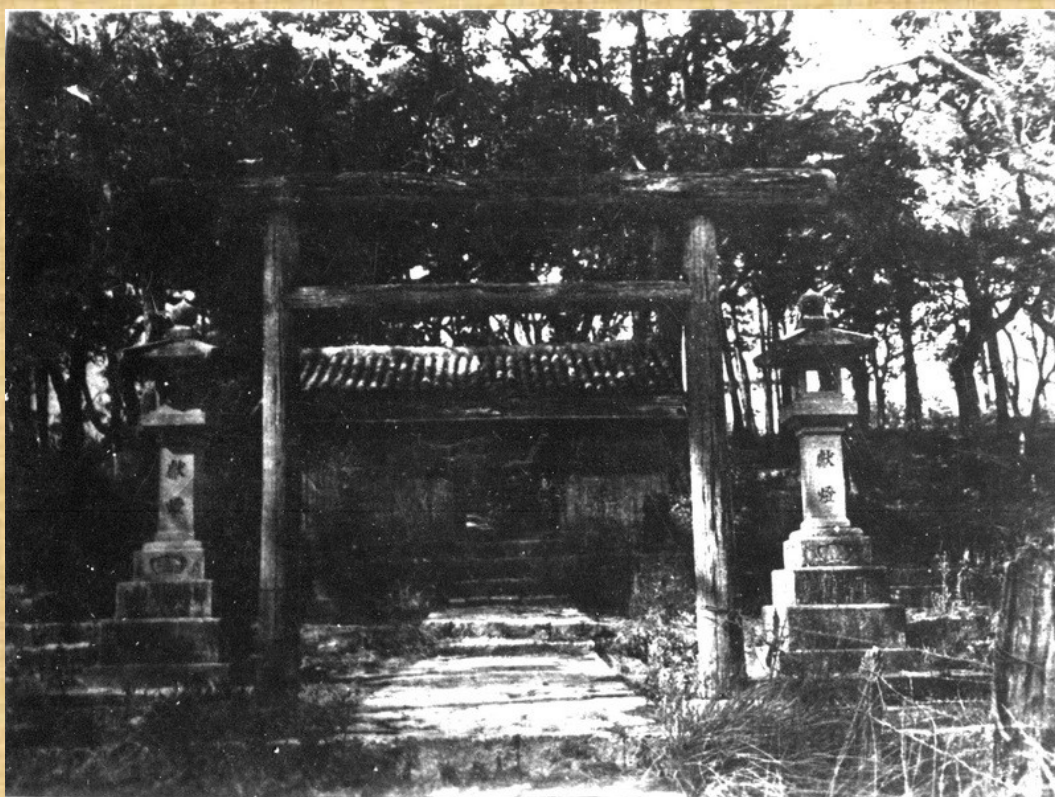


1945-46





1945-46



1945-46





1949



1949

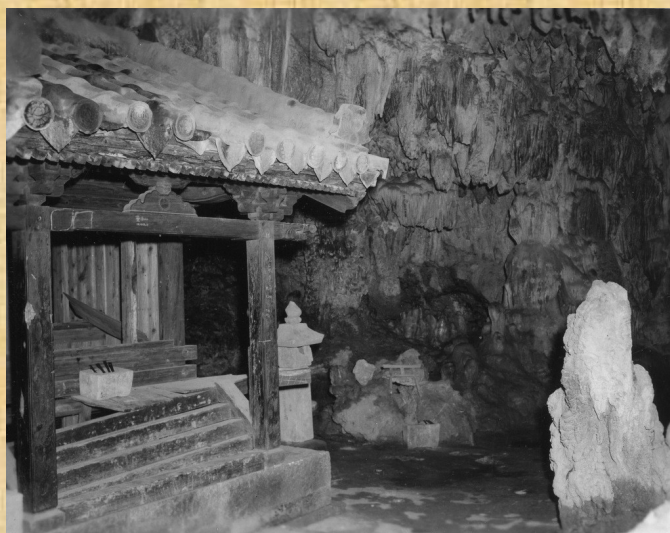




1949



1949



1949





**EARLY 1950'S AMERICAN PHOTO SERVICE PHOTO**



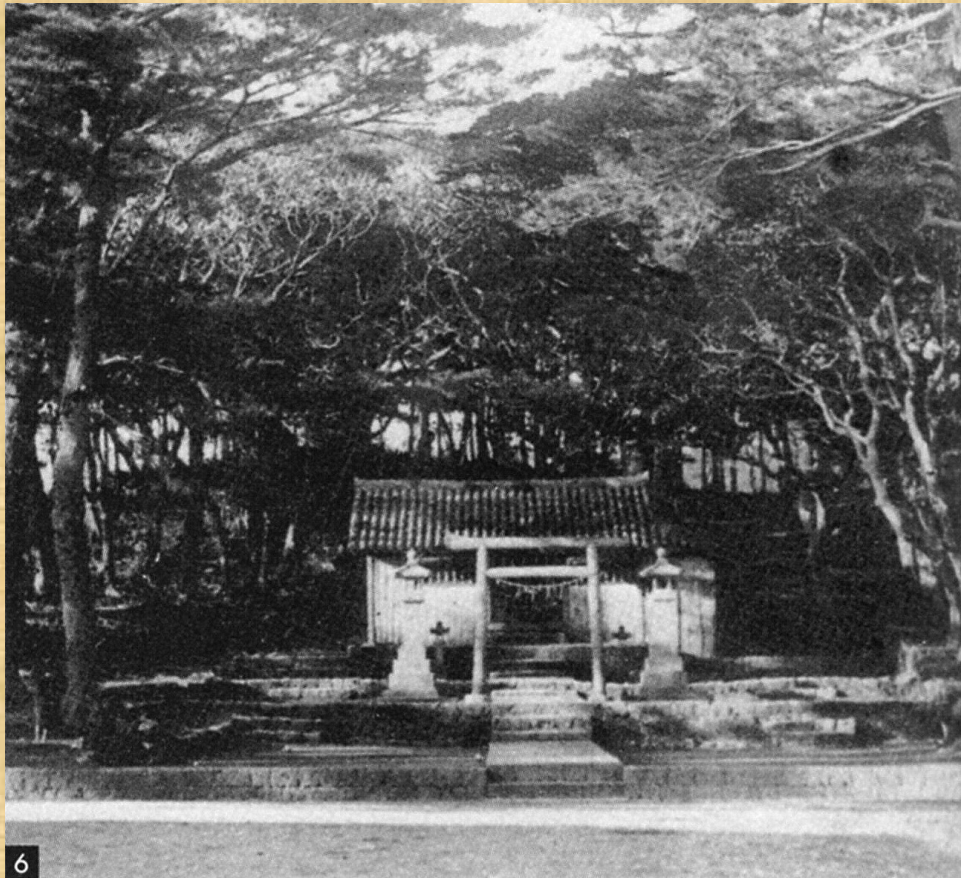


**EARLY 1950'S AMERICAN PHOTO SERVICE POSTCARD**

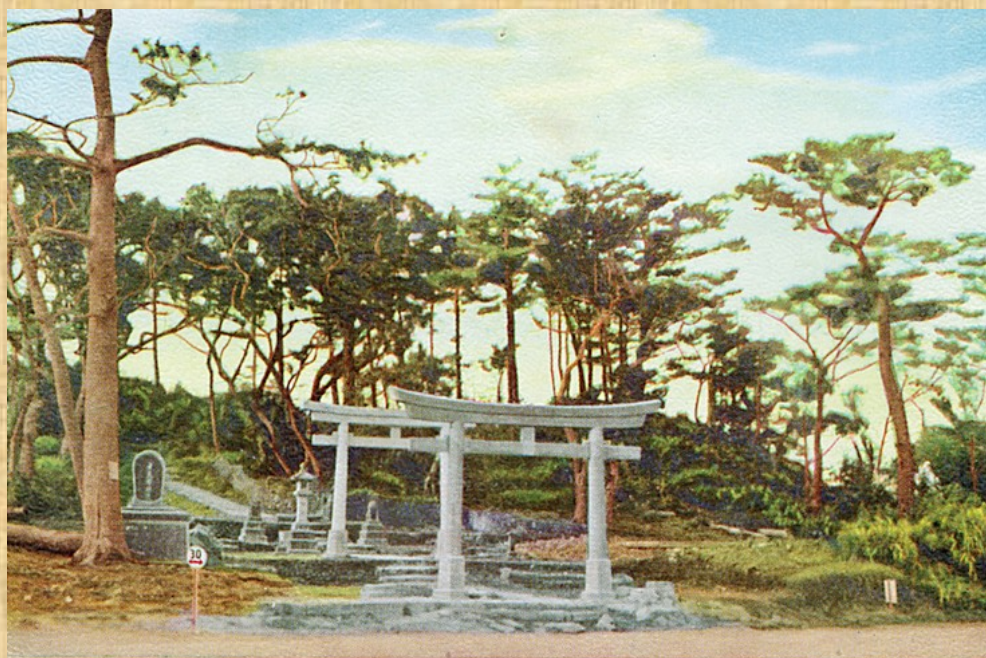


**EARLY 1950'S AMERICAN PHOTO SERVICE PHOTO**









FUTEMMA GU

普  
天  
間  
宮



普 天 間 權 現 (中頭郡宜野湾村)

Futenma Gongen, Ginowan Nakagami





*Futenma Shrine, Ginowan Nakagami.*

普天間神宮（中頭郡宜野湾）



FUTEMMA GU

普天間宮









**1955 KODACHROME SLIDE**



**1955 KODACHROME SLIDE**



**BUDDHIST TEMPLE AT FUTENMA SHRINE**



**1955 KODACHROME SLIDE**



**MOSHER REID PHOTO SERVICE BOOKLET EARLY 1950'S**





**1955 KODACHROME SLIDE**