

**OKINAWA MILITARY LICENSE PLATES FOR PRIVATE VEHICLES
1946 TO 1972**



**1949 DAC (DEPARTMENT OF THE ARMY CIVILIANS) CHRISTMAS PARADE
1946 TO 49 STYLE**



**1946-49
3 DIGIT SMALL PLATE**

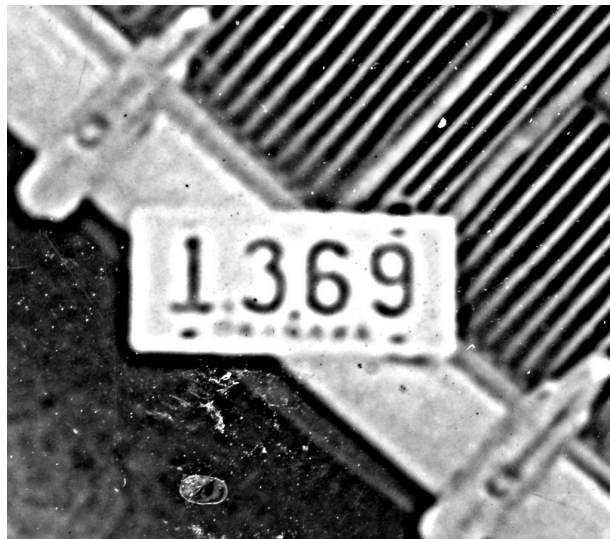
BLACK ON WHITE

OKINAWA

1949-1950



4 DIGIT WITH DOT
BLACK ON WHITE



1949-1950 PHOTO
4 DIGIT WITH DOT



**4 DIGIT - NO DOT
PROBABLY 1950-1951, NOTE "2" FONT IS SIMILAR
TO LATER YEARS "2" FONT**

BLACK ON WHITE

OKINAWA

1951



FIRST PLATE WITH DATE
YELLOW ON GREEN
OKINAWA



1952



ORANGE ON BLACK
RYCOM 52



1953



**BLACK ON YELLOW - BLACK BORDER
OKINAWA 1953**



1953 PHOTO -29TH INFANTRY REGIMENT

1954



YELLOW ON BLACK - YELLOW BORDER
OKINAWA 1954
(TORII ADDED)



1955



BLACK ON YELLOW - BLACK BORDER
(RANK ADDED)

3 POSSIBLE PLATE VARIATIONS, O - OFFICER, E-ENLISTED, C-CIVILIAN



1956



WHITE ON RED - WHITE BORDER
 (KEYSTONE OF PACIFIC ADDED)
 3 POSSIBLE PLATE VARIATIONS, O - OFFICER, E-ENLISTED, C-CIVILIAN



1957



BLACK ON ORANGE - BLACK BORDER

3 POSSIBLE PLATE VARIATIONS, O - OFFICER, E-ENLISTED, C-CIVILIAN

1958



**YELLOW ON BLACK
(KEYSTONE OF THE PACIFIC ADDED)
YEAR TAB ADDED**

3 POSSIBLE PLATE VARIATIONS, O - OFFICER, E-ENLISTED, C-CIVILIAN



1959



YELLOW ON BLACK
(59 YEAR TAB)

3 POSSIBLE PLATE VARIATIONS, O - OFFICER, E-ENLISTED, C-CIVILIAN



1960



**BLACK ON YELLOW
(60 YEAR DATE ADDED)**

3 POSSIBLE PLATE VARIATIONS, O - OFFICER, E-ENLISTED, C-CIVILIAN



1961 RANK PLATE SERIES

YELLOW ON BLACK
(61 YEAR DATE ADDED)
(ALPHA RANK CODE ADDED)



文字, 番号	職種, 階級	文字, 番号	職種, 階級
◆ 9 から 1 までの数字のみ	将官	ED と数字	E-5
◆ 10 以上の数字のみ	大佐	EE と数字	E-5
LC と数字	中佐	EF と数字	E-5未満
MA と数字	少佐	◆ C と数字	GS-16, 15
CP と数字	大尉(い)	CA と数字	GS-14, 13
LT と数字	中, 少尉	CB と数字	GS-12
WO と数字	軍(じゅん)尉	CC と数字	GS-11, 10
E と数字	E-9, 8	CD と数字	GS-9, 8, 7
EA と数字	E-7	CE と数字	GS-6, 5, 4, 3, 2, 1
EB と数字	E-6	CF と数字	英(けい) 弁 交換 (かん), 技術関係 者
EC と数字	E-6		

◆ 印は文字のみを使用することもできる。

下士官の車のプレート・ナンバー



同様の車のプレート・ナンバー



陸, 海, 空軍の士官の車のプレート・ナンバー



1961 PLATE ON CAR**1961 BASE OPERATIONS - KADENA AIR BASE**

MINIMUM OF 23 POSSIBLE PLATE VARIATIONS BASED ON RANK

1961 RANK PLATES	
Officer Grade Prefix	Rank
no prefix, 1 - 9	General
no prefix, 10 and higher	Colonel
LC	Lieutenant Colonel
MA	Major
CP	Captain
LT	Lieutenant
WO	Warrant Officer
Enlisted Grade Prefix	Type/Pay Grade
E	Enlisted; E-9 and E-8
EA	Enlisted; E-7
EB	Enlisted; E-6
EC	Enlisted; E-6
ED	Enlisted; E-5
EE	Enlisted; E-5
EF	Enlisted; E-5
EJ	Enlisted; pay grade unknown
Civilian Grade Prefix	Type/Pay Grade
C	Civilian Contractor; GS-16 and GS-15
CA	Civilian Contractor; GS-14 and GS-13
CB	Civilian Contractor; GS-12
CC	Civilian Contractor; GS-11 and GS-10
CD	Civilian Contractor; GS-9 to GS-7
CE	Civilian Contractor; GS-6 to GS-1
CF	Civil Engineers, other Civilian Workers
CH	Civilian/unknown

1962



**BLACK ON YELLOW
(62 YEAR DATE ADDED)
(5 DIGIT PLATE NUMBERS)**

1963 STICKER ON 1962 PLATE



1963



**BLACK ON YELLOW
(NO YEAR DATE, STICKER USED)**



1964



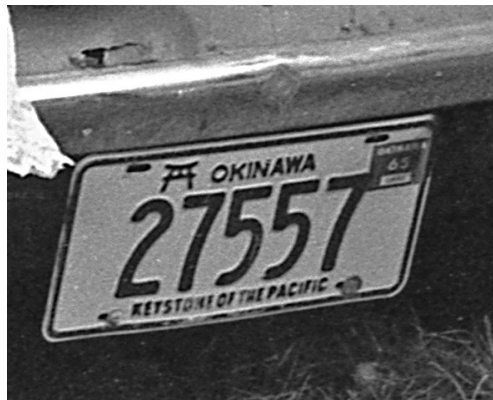
**BLACK ON YELLOW - BLACK BORDER
(NO DATE STICKER)**



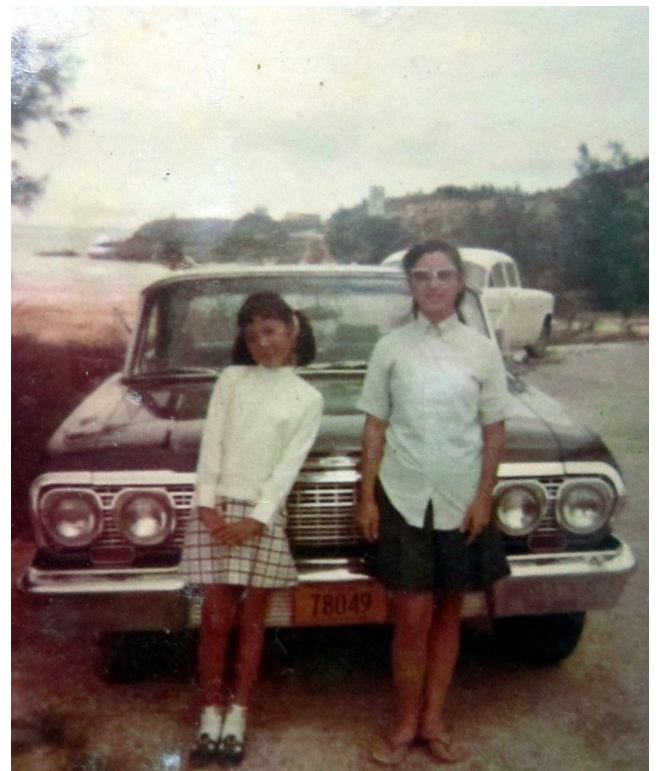
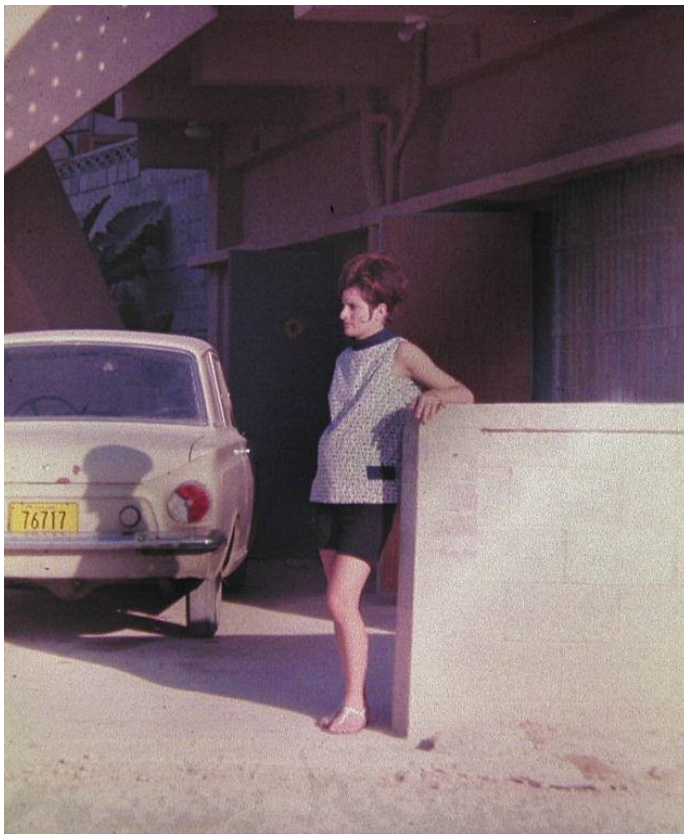
1965



**BLACK ON YELLOW - BLACK BORDER
(DATE STICKER ADDED)**



**AFTER 1965 NO DATE STICKERS ON PLATE, DATE WAS ON
WINDSHIELD OR BUMPER STICKERS
1964 PLATE DESIGN STILL IN USE IN 1968 1969 AND 1970 BASED ON DATED PHOTOS**



TEMPORARY “US” DESIGN PLATE

**SEE STORY OF THE TEMPORARY PLATE FROM
THE 29 OCT 1971 ISSUE OF “THIS WEEK ON OKINAWA”
ON PAGE 28**

**IT APPEARS FROM DATED PLATE ON CAR PHOTOS THAT THE 1964 PLATE DESIGN
WAS USED AS LATE AS 1970 WHEN THEY STARTED TO RUN OUT OF NUMBERS.**

**SOMETIME DURING 1970-71 THERE WAS A PROBLEM WITH DELIVERY OF THE AL-
PHA NUMERIC PLATES AND THEY WERE FORCED TO START LOCAL MANUFAC-
TURING OF THE US DESIGN PLATES WHICH WERE THEN ISSUED UNTIL THE AL-
PHA NUMERIC PLATES WERE DELIVERED**

**THE EXCHANGE OF THE US DESIGN PLATES FOR THE NEW 2 LETTER 3 NUMBER
PLATES WAS TO START IN NOVEMBER 1971.**

**7 MONTHS LATER IN MAY 1972 THE RYUKYU ISLANDS WERE RETURNED TO JA-
PAN AND THE OKINAWA MILITARY PLATES WERE REPLACED WITH
JAPANESE ISSUED CIVILIAN PLATES.**

LAST UNITED STATE MILITARY ISSUE PLATE USED ON OKINAWA



BLACK ON YELLOW

DATES OF USE BELIEVED TO BE 1970 TO MAY 1972

1971-72 PHOTO- LAST US MILITARY PLATE DESIGN BEFORE REVERSION**1970-71 PHOTO SHOWING BOTH THE 5 DIGIT PLATE
AND THE ALPHA NUMERIC PLATE**

1971 NON-STANDARD "US" DESIGN TEMPORARY PLATE - LOCAL MADE



New Plates To Be Issued

All U.S. Forces personnel operating privately-owned vehicles which bear license plates with the non-standard "US" design will soon be required to exchange these plates for standard plates, according to a USARYIS Provost Marshal Office spokesman. The spokesman hastened to add that this exchange will be at no cost to the vehicle owner and will be accomplished with the least amount of inconvenience to him.

The plates with the non-standard "US" design were manufactured locally and issued by the Vehicle Registration Branch of the USARYIS Provost Marshal's Office when a shipment of new plates manufactured in the United States was delayed and the supplies of standard plates were exhausted, the spokesman explained.

Because the manufacture of a standard plate die by the local ironworks would have taken too much time, the USARYIS Provost Marshal, Colonel Hugh H. Riddle, was forced to authorize the registration of vehicles with the "US" design which were more easily made and thus readily available for issuance.

The Provost Marshal spokesman indicated that the only alternative to this action would have been to allow vehicle owners to operate un-registered and unlicensed vehicles on the highways. This, of course, was unacceptable, he added.

The exact details of the plate exchange procedure were not available as of this writing but, according to Colonel Riddle, "we would like to start exchanging plates no later than the first of November. We plan to allow vehicle owners to come into the Vehicle Inspection area in Sukiran where Vehicle Registration personnel will replace their plates and make the minor alteration in the registration certificates (Form DD 430) while the operator waits. The procedure will be set up so as to cause the least inconvenience possible."

The plan calls for each vehicle owner to receive standard plates bearing the same number as those plates replaced. However, the letter prefix will not be the same.

29 OCT 1971 ISSUE OF "THIS WEEK ON OKINAWA" MAGAZINE