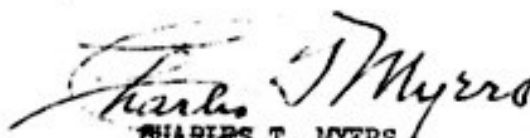


The Commanding General, the Staff, and personnel of the First Air Division welcome you to Okinawa, and hope you will enjoy your tour of duty here. Information contained herein is published in an effort to acquaint you with this command and to assist you in arriving at your ultimate destination with the least practicable delay.


CHARLES T. MYERS
Major General, USAF
Commanding

First Air Division is organized with two (2) wings; 371st Fighter Wing, located at Naha, and 316th Bombardment Wing, located at Kadena. First Air Division Headquarters is also at Kadena.

Organization of 1st Air Division

Telephone Information

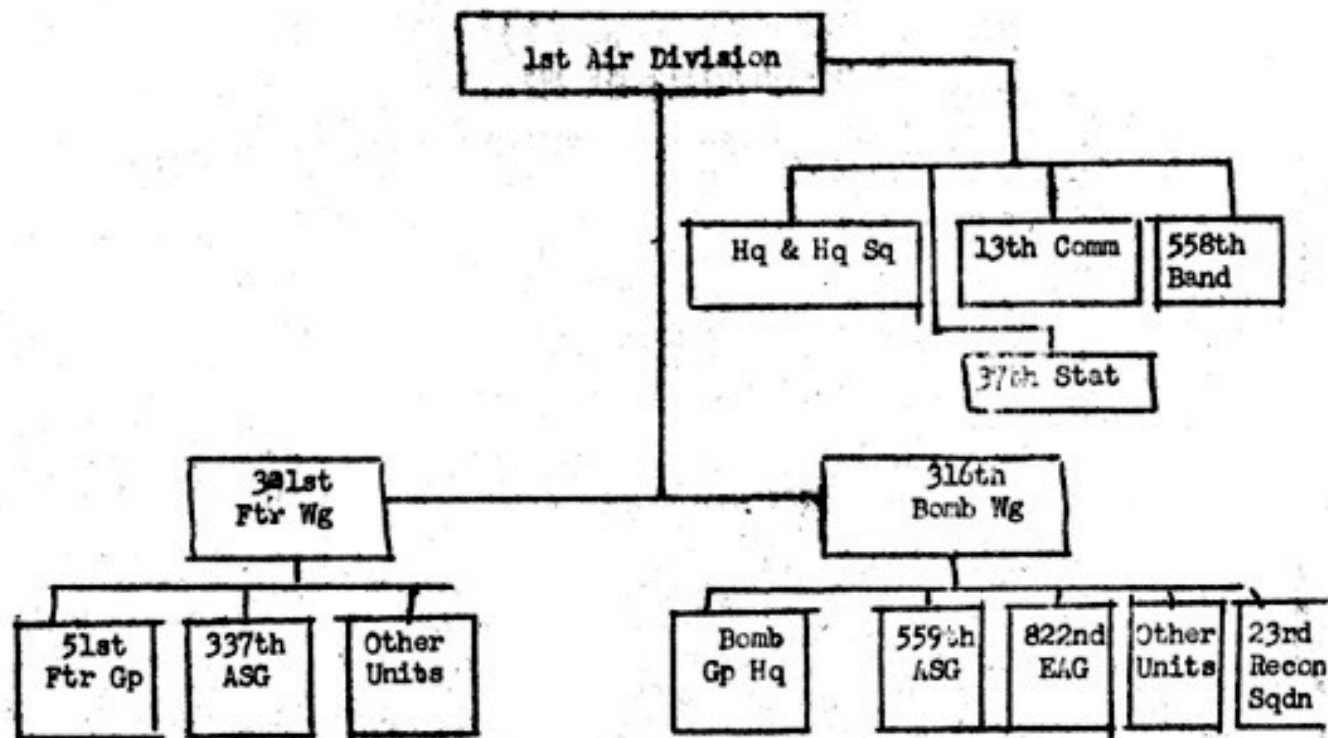
ATO Booking Office - Air Depot 171	301st Ftr Wg Transportation -
	Transportation - Air Depot 32
ATO Operations - Air Depot 259	316th Bomb Wing
	Transportation - Kadena 319

Headquarters 1st Air Division

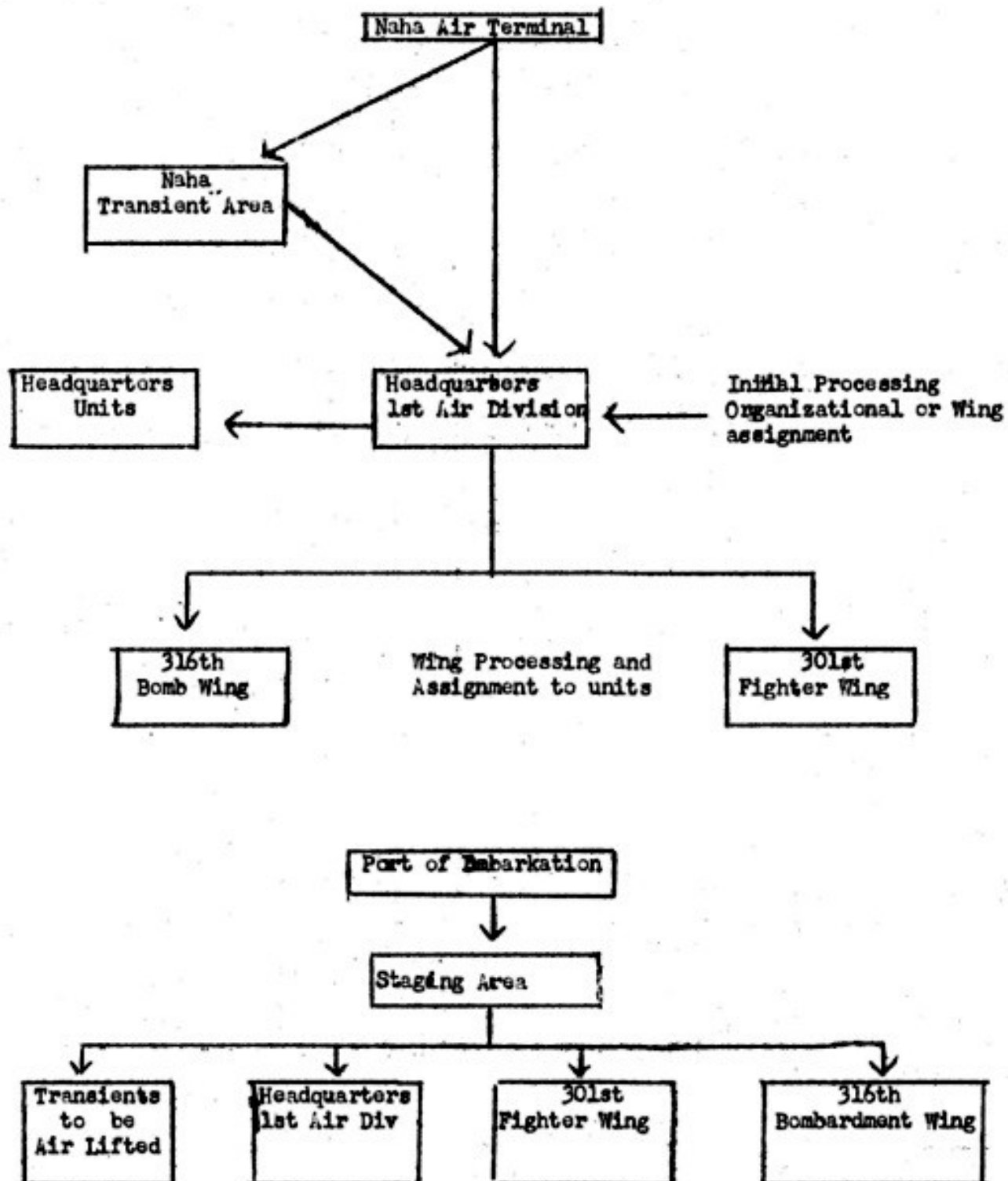
Military Personnel Officer, A-1 - Kadena 271

Staff Duty Officer (Between 1700 - 0800 Hrs) - Kadena 157

Transportation Section - Kadena 385



FLOW OF INCOMING PERSONNEL ARRIVING BY AIR OR WATER
(OKINAWA)



INSTRUCTIONS FOR ENLISTED PERSONNEL ARRIVING BY AIR

1. a. If you have arrived on Okinawa during the following hours: 0800 to 1500, the First Air Division Liaison Section located in the Air Terminal Building will arrange for your transportation to Headquarters and Headquarters Squadron, First Air Division, where you will be temporarily billeted and fed until such time that you are interviewed and assigned to one of the two wings in First Air Division.

b. If your arrival is after the above specified hours, the Liaison Section or the Airdrome Officer will arrange for your transportation to Naha Transient Camp, where you will be temporarily billeted and fed until the following day when the non-commissioned officer in charge of the First Air Division Liaison Section will have you transported to Headquarters and Headquarters Squadron, First Air Division.

2. In order that a minimum amount of time is spent in transporting, housing, and processing, your utmost cooperation is requested in that you remain in the immediate vicinity of Naha Air Terminal and keep in contact at all times with the Liaison Section of the First Air Division, while arrangements are being made for your transportation. If you are temporarily located in the transient area, remain in contact with the transient area orderly room until movement instructions are received.

3. Personnel arriving First Air Division for temporary duty or detached service, contact Liaison Section for necessary transportation to unit attached, or if arrival is after normal duty hours, the Liaison non-commissioned officer will make necessary billeting and messing arrangements.

PROCESSING ENLISTED MEN ARRIVING BY AIR

Assigned to 1st Air Division

Incoming processing begins with your arrival at Headquarters and Headquarters Squadron, First Air Division. Every effort will be made to retain you not more than twenty-four (24) hours within this unit.

You will be instructed by the orderly room as to the time and place of initial interview. During interview with the First Air Division Assignment Officer, you will be informed of your wing or organizational assignment. Following interview, you will be instructed as to the time of movement to the wing or organization assigned. Such questions as pay and allowances, allotments, mail, etc. can be answered for you by the unit or group to which finally assigned; however, if any of the above items are considered by you to be of an urgent nature - consult Headquarters Squadron, First Air Division Orderly Room personnel.

INFORMATION FOR ENLISTED PERSONNEL ARRIVING BY WATER

1. You have debarked at either White Beach on the eastern side of Okinawa, or at Naha on the China Sea side. Upon debarkation you were met by representatives of 1st Air Division Casual Detachment, and transportation was supplied to move you to a staging area where your group will be separated into four (4) distinct categories.

2. We have had advance notice of your arrival, and in most cases assignments have already been completed on you. You have been assigned to one of the following:

a. Headquarters, 1st Air Division Casual Detachment for further processing and assignment, (normally all non-commissioned officers of the first three (3) grades).

b. Headquarters, 316th Bombardment Wing, Kadena Air Force Base.

c. Headquarters, 301st Fighter Wing, Naha Air Force Base.

d. Headquarters, 1st Air Division for further assignment off the island to another command (Japan, Guam, and Philippines).

3. Following your assignment to one of the above four (4) groups in the staging area you will be moved to the organization of assignment, or if you are assigned to another command, to the organization at which you will be temporarily billeted pending further air lift.

4. Within 24 hours of your arrival an orientation and briefing will be held for incoming personnel, you will be notified of the time and place, which will consist of the following:

a. Prepared briefing.

b. Period devoted to answering pertinent questions which you may have.

INCOMING PROCESSING OF OFFICERS WHO HAVE ARRIVED BY AIR OR WATER

1. All incoming officers will be processed and interviewed within 24 hours of arrival at Headquarters, 1st Air Division. Assignments will be made to one of the two wings under this command. The following is the order in which you will be processed:

- a. Billeting arrangements.
- b. Briefing
- c. Sign in at the Adjutant General Section
- d. Fill out necessary processing forms
- e. Interview
- f. Record Check
- g. Await orders and transportation to assigned organization.

2. Certain officers who arrive by water will be further assigned to other commands. These officers are not required to process through this headquarters, but are required to process through steps a, b, and c above. Normally these officers will be billeted in Naha Air Force Base Air Transient Camp to await further orders and air transportation to command of assignment (Japan, Guam, and Philippines).

3. Officers may submit pay vouchers upon arrival at final organization of assignment; there are finance offices located in the 301st and 316th areas, pay vouchers are submitted direct to this office. Your first pay voucher will be prepared by the Finance Officer; it will be your responsibility to submit subsequent vouchers. If partial pay is required immediately upon arrival you may contact the Finance Officer located in 316th B W Area.

Recreational Facilities Available for Personnel on Okinawa

Every unit has a theater, either 35mm or 16mm, which shows current Stateside movies. The largest theaters are the Victory in the Naha area, the Easley Bowl in the Rykom area, the Griffin in the Kadena area, and the Kadena in the Headquarters, 1st Air Division area. Most of these are open-air theaters, but the Victory is covered and the Kadena is in the process of being enclosed.

A golf course, available to all personnel on the island, is located near Rykom. Golf clubs are available at a nominal fee and golf balls may be bought in any quantity at the Rykom Golf Club house.

Service Clubs which feature entertainment for enlisted men are the Buzz-Inn Club in the 623rd Aircraft Control and Warning Squadron area, the Up-N-Atom Club in the Kadena area, the Hillside Club and the Terrace Club in the Rykom area, the Club Top-of-the-Rock in the Military Government area, and the Naha Service Club in the Naha area. There are snack-bars situated at Naha, Rykom, Kadena and Camp Kue, where sandwiches and coffee, and full course meals may be purchased from about 0800 until 2200 or 2300 hours. Each organization has its Officers' Club, its non-commissioned officers club, and its Enlisted Men's Club. In addition, a few units have beer gardens in connection with the Post Exchange.

Each unit has a library open from 1300 to 2200.

Ishikawa Beach, on the east side of the island, is available to all island personnel. A beach on the west side of the island in the Kadena area will soon be under construction. Lolly Beach is primarily for the use of Negro troops as a Rest Center. Okuma Rest Center, at the North end of the island, has facilities for officers and civilians to spend periods up to one week. Deep sea fishing and boating arrangements may be made with the Kadena Air Base Special Services.

There are skeet ranges in the Naha and Kadena areas.

Football fields, softball fields and baseball fields, volleyball courts, tennis courts, and handball courts are available in most headquarters areas. Horseshoe pitching is available in each unit. There is a covered gymnasium in the Headquarters, 1st Air Division area. Athletic and recreational equipment is available in every unit's Supply.

The hunting season is governed by 1st Air Division and Rykom regulations. Shot guns may be drawn from Unit Supply or Special Services Supply. Gun permits and hunting licenses may be obtained at unit orderly rooms.

HEALTH HAZARDS ON OKINAWA

INTRODUCTION

The diseases encountered on Okinawa are very much the same as those in the United States. Tuberculosis, leprosy, intestinal and parasitic diseases are prevalent. Those of greatest concern to military personnel are malaria and Japanese "B" encephalitis. Venereal disease is also very prevalent on the island.

MALARIA & JAPANESE "B" ENCEPHALITIS

Insect-borne diseases are considered of most importance, especially mosquito-spread malaria and Japanese "B" Encephalitis. The malaria rate for this area is the highest of any of the occupied zones, and is due to the continuous presence of malaria on Okinawa and to the lack of adequate malaria control. Considerable time is lost from malaria, which is rarely fatal. Japanese "B" Encephalitis, however, is much more serious. Three cases developed in 1947 among American personnel, with three fatalities. In many respects this disease is similar to poliomyelitis. Exact method of spread of this disease is not known, but mosquitoes are believed definitely involved.

PROBLEMS OF MOSQUITO AND RODENT CONTROL

The problem of mosquito control is outstanding. Mosquito breeding may occur in any accumulation of water, such as rice paddies, pools under buildings, barrels, buckets, etc. Various methods of control can be used to eliminate the mosquitoes, and all of them must be used in order to obtain desired results. Rats are very numerous and destructive, and are capable of spreading disease, particularly plague, through the fleas which they carry. Rats can be exterminated by poisoning, trapping, and avoiding access to foods. Every effort must be made by each individual to obtain satisfactory control of all insects and rodents.

SKIN DISEASES

Skin diseases are prevalent, but are preventable when proper bathing and laundry facilities are available.

VENEREAL DISEASE

All of the venereal diseases are present on Okinawa. Most of the venereal disease acquired on the island of Okinawa is by contact with the Okinawan natives. Remainder of the cases are contracted in the Philippines and Japan. The present Air Force policy makes each individual morally and personally responsible to avoid contact with venereal disease.

IMMUNIZATIONS

The ordinary immunizations are required - smallpox, tetanus, cholera, typhoid, and such special vaccines as influenza, Japanese "B" Encephalitis, as required

NATIVE POPULATION

The ordinary native population is dispersed over the island, and in considerable numbers on air installations. These natives are the reservoir of all these diseases. Many natives are used as maids and food handlers and particular care must be taken to train and educate them properly along sanitary lines to avoid spread of these infections.

NATIVE GROWN VEGETABLES

Vegetables that are fertilized in the oriental fashion are not safe for use. However, if grown otherwise should be fairly safe after treatment by cooking, or washing with sterilization (chlorine solution).

MEDICAL SERVICES

Air Force installations have dispensaries and all personnel are obligated to report to the dispensaries for treatment. Hospitalization and consultations are done by the Army 37th Station Hospital. Patients are transferred there when required. Each individual is responsible to acquaint himself with the local dispensaries, and sick call procedures.

1. Uniform Regulations

The summer uniform is the standard uniform on Okinawa and may be worn during the entire year; however, the winter uniform is optional between 1 November and 1 May. Various items of the uniform will not be mixed; i.e., cotton and wool, class A's and fatigues, or any non-prescribed combination. The field jacket may be worn with either the summer or winter uniform. Necktie will be worn at all times with the winter uniform. Prior to retreat each day, during the period that the summer uniform is being worn and when not in attendance at formations or social functions, shirt sleeves may be neatly rolled above the elbow.

2. Curfew

A curfew exists on Okinawa during the following hours: 0200 to 0530. This applies to all military personnel with the exception of those on official business.

3. Carrying of weapons

All military personnel should read and become familiar with the provisions of 1st Air Division Regulation 46-6.

4. "Off Limits" Areas

Villages, residences, building structures, or tents which are occupied by or reserved and designated for the exclusive use of Ryukyans are "Off-Limits" to all military personnel except for the conduct of specifically authorized business. Other portions of the island as indicated on attached map (back of booklet) are off-limits to all personnel. Passes may be secured from various Military Police organizations for travel during daylight hours in the Northern end of Okinawa.

5. "Black Market Activities"

Government issued clothing and equipment carried by or intended for the use of the Armed Forces; Military Payment Certificates; Army Exchange Facilities or Sales Commissary items will not be given, bartered, exchanged, sold, traded, or otherwise permitted to fall into the hands of the Ryukyans.

6. Use of Military Payment Certificates

In areas where the War Department has designated military payment certificates as the medium of exchange within the military establishment, military payment certificates are the only authorized medium of exchange in--

a. All United States Army and Navy sales and services installations and activities.

b. Theater, moving picture, and other entertainment facilities, operated by the military establishment.

c. Officers' and enlisted men's messes and clubs, including American Red Cross installations.

d. Contributions for all charitable purposes, including all authorized charitable appeals, church collections and chaplain's funds, wherever ultimate remittance to the United States through United States Army channels is involved.

e. Payments to all travel agencies, radio, cable, telegraph, and telephone companies, and all other facilities of similar types, wherever ultimate remittance to the United States through United States Army channels is involved.

f. Sale of stamps and other postal services at United States Army and Navy postal installations.

g. All other official agencies, quasi-official and private agencies of or working in behalf of United States Armed Forces providing goods, services and facilities to members of United States Armed Forces.

7. Security Restrictions

Special emphasis is placed on safeguarding military information in this area. Information as to number of units and troops, and aircraft is regarded as Confidential. Security restrictions also prohibit photographs of vital installations such as radar sites and airstrips. It behooves all personnel to read and become thoroughly familiar with provisions of AR 380-5.

8. Conduct of Personnel toward Okinawan Natives.

Personnel will conduct themselves in such a manner as to maintain the respect of the Ryukyans. Violation of recognized moral codes, improper conduct toward personnel and property, which are punishable under the Articles of War, will be dealt with severely.

The following are excerpts from a letter initiated by the Commanding General of the 1st Air Division.

"American occupation forces have found the Okinawan people friendly, intelligent, and circumspect in their conduct. We have aided these destitute people to rebuild their homes, by making scrap and salvage materiel available to them. American Military Government has in some cases, helped build whole communities, meanwhile supplying to all the people their minimum needs in food and clothing at prices they could afford to pay. Thievery by natives is exceedingly low, and crimes of violence by them against Americans is unknown. We rely heavily upon native labor to help provide essential services and to aid in construction work. Black market activities and trading with the natives has been low here - probably less than in any occupied country, and must be strictly curbed in the future to preserve a stable wage scale and adequate supply of native labor."

"For the most part the conduct of American and other occupation personnel toward Okinawan natives has been exemplary and above reproach. However, there are a certain few whose acts have been a reflection and reproach to us as a civilized people, and who must and will be curbed with every power at our command. The Ryukyus Islands have been called the "Islands of Propriety" and the gentleness, honesty, and morality of its people have shown the appellation to be well deserved. Offenses against this people by personnel of this command will not be tolerated or condoned."

(Letter Cont'd)

"American troops and associated personnel should remember that they are representatives of a great Christian nation, and a kindhearted, noble people. Relations toward Okinawans must be exemplary at all times and marked by the friendly, respectful, and considerate attitude befitting our own self-respect, and the respect due a worthy people."

A MESSAGE FROM THE CHAPLAIN

In every abrupt change of environment there is an accompanying adjustment, mentally and emotionally as well as physically, that must be made. Okinawa is no exception. To assist and advise in this adjustment, as well as to provide full opportunity for religious expression, worship, and duties, a full complement of Chaplains is on the Island.

Chapels are strategically located, and Services representing the major faiths are available to all. Sunday Schools for children of all ages are maintained. Hours and places are announced over the local radio station and in the newspaper.

For those who may wish to offer their services in Chapel activity there is always a need for Sunday School teachers, organists, and musicianship of any kind - particularly vocalists. It is suggested that you contact a Chaplain soon after your arrival if you wish to participate in the Chapel program.

It is well to remember that we are citizens of a Christian nation residing in an occupied country and that the Democracy we proclaim in our daily living and intimate contact is the best example our government has to offer those who are uninformed and who look to us for leadership and example.

Frequent attendance at a worship service is of immeasurable value to those who appreciate its worth.

* * * *

BRIEFING ON AMERICAN RED CROSS

1. Within the 1st Air Division of which you are now a member, there are two (2) American Red Cross Field offices. One located at the Kadena Air Force Base, on Route #20. Telephone number Monday through Friday - Kadena 442; and on Saturday or Sunday in case of emergency - Kadena 442 or 449. The other office is located on Naha Air Force Base, on Route #1. Telephone number Monday through Friday - Naha 277; and 274. In case of emergency on Saturday or Sunday call Naha 277 or 274.

2. Either one of these offices is very capable and willing to render services as concerns the following:

- a. Services in all types of emergencies.
- b. Verification service for emergency leaves.
- c. Family contacts for servicemen.
- d. Health and welfare reports on members of family.
- e. Emergency loans.
- f. Financial assistance to families.
- g. Assistance in completing and filing WD Form 620 for Family allowance.
- h. Assistance in marital troubles.
- i. Information on State Bonus.
- j. Job and Career planning.
- k. Advice and consultation on all matters affecting servicemen and their families.

l. Service to all veterans in handling pension claims and many other services too numerous to mention.

3. Although American Red Cross is quite willing to give assistance in matters as listed above, there are a few ground rules which you must follow.

- a. Be sure to advise family and friends immediately upon arrival of your complete military address.
- b. In case of emergency at home, have your friends or family contact nearest Red Cross office to initiate action in order that many valuable and anxious hours or even days and unnecessary expense to you and your family and the ARC may be avoided.
- c. If the emergency arises on Okinawa, or any doubt is experienced about some difficulty you or your family are experiencing contact one of the American Red Cross offices mentioned in paragraph 1 above.

