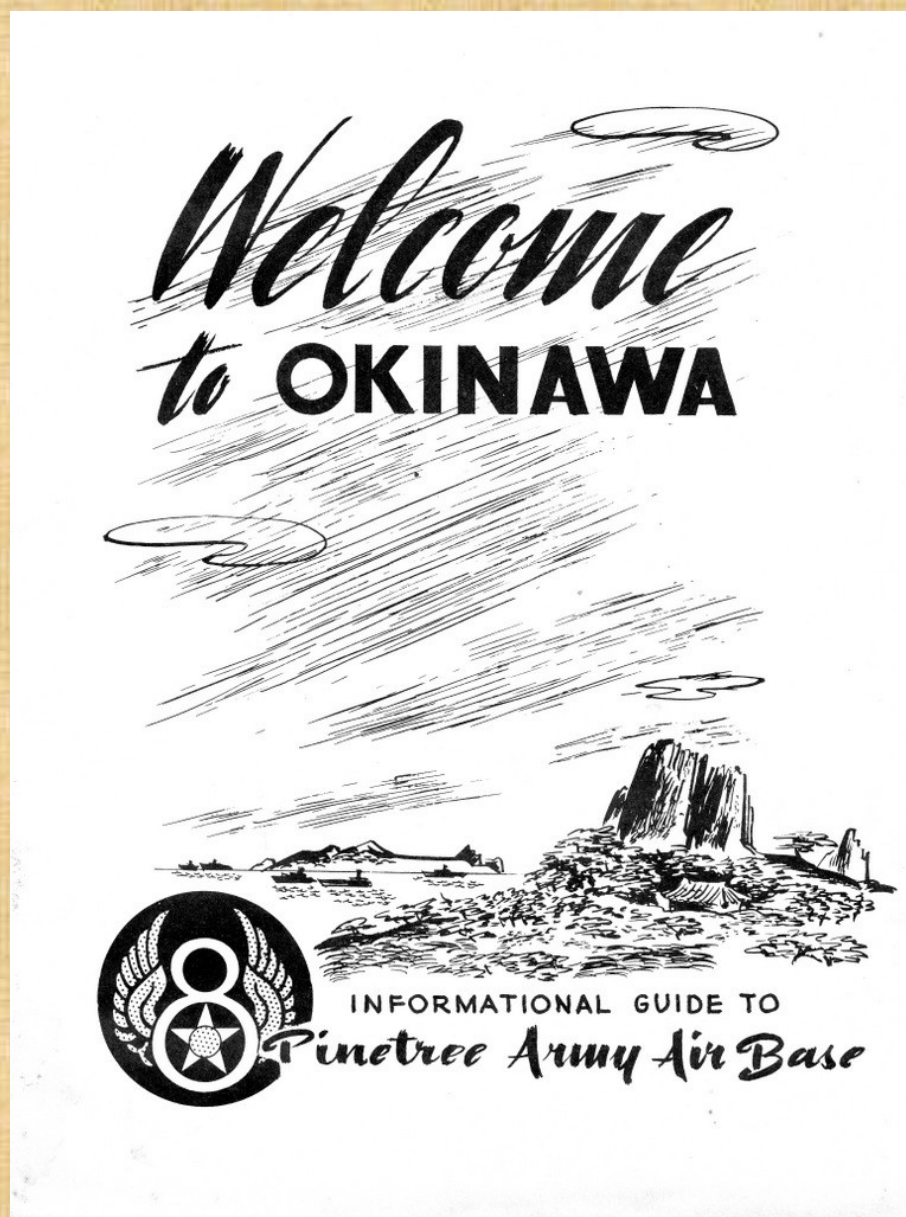


PINETREE ARMY AIR BASE

LOCATION OF 8TH AIR FORCE HEADQUARTERS
SAKUGAWA, OKINAWA

16 JULY 1945 TO 7 JUNE 1946

8TH AIR FORCE ON OKINAWA WAS RESPONSIBLE FOR
KADENA AIRFIELD, BOLO AIRFIELD AND FUTEMA AIRFIELD



REVISED 16 AUGUST 2014

COPYRIGHT © 2010 - 2014 DONN E. CUSON

10 PAGE BOOKLET PUBLISHED SOMETIME BETWEEN JULY 1945 AND JUNE 1946



INFORMATIONAL GUIDE TO
Pinetree Army Air Base

Pinetree Army Air Base, home of Headquarters, Eighth Air Force, is located on the west coast of Okinawa on Route 1 and Queen Street, 15 miles north of the former native capital city of Naha. Most of the Base area is situated in what was formerly a large native village. However, nearly all of the village was destroyed during the invasion and few, if any, remnants of its existence now remain.

The closest air field, Kadena, lies two miles to the north. Yontan air field is four miles north and Bolo air field seven miles to the north.

The Base area is three miles south of the Okinawa Traffic Circle, hub point for motor travel, and is about one mile from White Beach.

LOCATIONS WITHIN PINETREE ARMY AIR BASE

OFFICERS' QUARTERS

Living accommodations for visiting officers are available immediately east of and across the road from the mess hall. Complete information and direction can be obtained from the billeting office (Tent No. 20, Phone 83) in this area.

ENLISTED MEN'S QUARTERS

Transient enlisted men will obtain quarters by going to the Headquarters & Headquarters Squadron orderly room located on Boeing Ave. 200 feet south-east of the intersection formed by Queen St. and Boeing Ave. Bedding will be available at Headquarters & Headquarters Squadron supply.

MESS FACILITIES

The large, double quonset mess hall directly across the road from the officers' area and south of the enlisted men's quarters is designed to feed both enlisted men and officers. Officers enter the mess hall on the south side of the east end. Enlisted men enter at the other end. Meal schedules are as follows:

<u>OFFICERS</u>		<u>ENLISTED MEN</u>
Breakfast	0630 to 0730	0600 to 0730
Dinner	1130 to 1300	1130 to 1300
Supper	1630 to 1800	1630 to 1800
Sunday		
Breakfast	0715 to 0830	0530 to 0800

OFFICE AREAS

Offices of staff sections for both Pinetree Army Air Base and Headquarters, Eighth Air Force, are located in the same general area, up the hill and facing north on Queen street in the vicinity of the flag pole. Tents are numbered and a directory of key staff personnel will be found in this booklet.

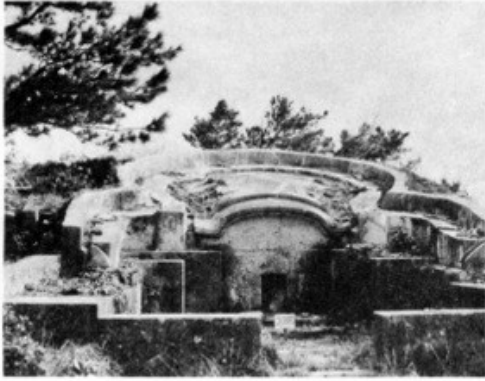
POST EXCHANGE

The PX is situated northwest of the mess hall and directly behind the enlisted men's quarters. Hours for the PX are as follows:

Sunday	Closed
Monday, Wednesday, Thursday	1130 to 1330 and 1630 to 1830
Tuesday, Friday	1130 to 1330 and 1630 to 2030
Saturday	1200 to 1600



GENERAL TIMBERLAKE - *from the Mediterranean to the Pacific*



Okinawa Tomb



A Baka Plane
WHICH NEVER SAW ACTION



Outdoor Theatre



The Chapel



Dispensary



5th Air Force Headquarters

CHAPEL

The new chapel is almost due west of the mess hall and close to the Post Office. Services are scheduled as follows:

JEWISH

Friday at 1900 - Sabbath Eve Service
Saturday at 0900 - Sabbath morning service

PROTESTANT

Sunday General Service at 1030
Sunday Vesper service at 1730
Holy Communion (Episcopal) at 1400

CATHOLIC

Holy Mass Sunday at 1145 and 1615
Weekday mass at 1615
Confessions before each mass

CLUBS

The Beach Club for officers is located about one mile south on Route 11. Schedule of parties and other events may be found on the bulletin board in the mess hall. The NCO and enlisted men's club is situated in a new frame building east on Queen Street and northwest of the enlisted men's area. Non-commissioned officers of Headquarters & Headquarters Squadron, units attached to Headquarters & Headquarters Squadron for rations and quarters, and non-coms. who were with the Twentieth Bomber Command in India may join the club upon payment of a \$5.00 initiation fee.

BARBER SHOP

Barber facilities are available in the barber shop approximately sixty yards west of the mess hall. Hours are from 0800 to 1130 and 1300 to 1600 daily, except Wednesday and Saturday afternoons and Sunday.

THEATER

The Theater is situated just back of the Headquarters, Eighth Air Force office area and between the two high hills. Movies are shown three days one week and four days the next at 1830. The schedule is published in the Pinetree Army Air Base newspaper, "Pinetree Poop". Excellent stage facilities are available for the entertainment of troops.

MEDICAL DISPENSARY AND DENTAL CLINIC

These are located due west of the mess hall and beyond the chapel. The dispensary and dental clinic are housed in two quonset huts in this area. Sick call is held at 0800 daily and Sunday.

HEADQUARTERS & HEADQUARTERS SQUADRON ORDERLY ROOM

Located on Boeing Ave. 200 feet southeast of the intersection formed by Queen St. and Boeing Ave.

POST OFFICE (239)

Situated approximately sixty yards south of the mess hall. Hours are from 0900 to 1100 and 1200 to 1630 Monday through Friday, 0900 to 1230 Saturday and closed on Sunday.

TRANSPORTATION

The motor pool is situated directly north and across Queen Street from the flag pole. Transportation may be obtained to Kadena Air Field and for other official business by calling Pinetree 35. The operations office at Kadena will provide transportation to Pinetree AAB upon request. Due to the shortage of transportation facilities, motor vehicles for pleasure and sightseeing trips are necessarily limited. However, every effort is being made by the Commanding Officer, Pinetree AAB, to provide as much recreational transportation as possible and frequent tours are scheduled. Individuals or parties interested in sightseeing trips of the island are invited to call Captain Ream, Special Services Officer, at Pinetree 37, or the Commanding Officer, Pinetree Army Air Base.

DIRECTORY

Headquarters, Eighth Air Force

<u>Title</u>	<u>Name</u>	<u>Phone</u>	<u>Tent</u>
Commanding General	Brig General Patrick W. Timberlake	6	
Actg Chief of Staff	Col Lloyd P. Hopwood	5	Gen Quarters
Actg Ass't C/s, A-1	Lt Col Charles P. Baer	1	11
Ass't C/s, A-2	Col William T. Smith	2	Gen Quarters
Ass't C/s, A-3	Col Donald W. Eisenhart	3	Gen Quarters
Ass't C/s, A-4	Col James F. Early	4	Gen Quarters
Ass't C/s, A-5	Col Emmett F. Yost	71	Gen Quarters
Adjutant General	Lt Col Donald F. Herbst	7	50A
Actg Air Inspector	Lt Col Xura L. Horn	9	13
Staff Chaplain	Lt Col William J. Claesby, Jr.	19	29
Chemical Warfare	Maj George E. Reynolds, Jr.	23	102
Communications	Col Hobart R. Yeager	10	Gen Quarters
Staff Engineer	Col Frederick B. Hall, Jr.	15	3
Finance	Maj Harold E. Zerweck	18-R3	103
Ordnance	Col Jerry M. Gritch	8	6
Surgeon	Col John M. Hargreaves	16	Gen Quarters
Provost Marshal	Capt William L. Taylor	51	43
Public Relations	Capt Laurence H. Macaulay	51	41
Staff Quartermaster	Col Arthur L. Inman	21	6
Special Services	Capt Harry C. Ream	37	45
37th Stat Control	Lt Col Finley MacQueen	54	18

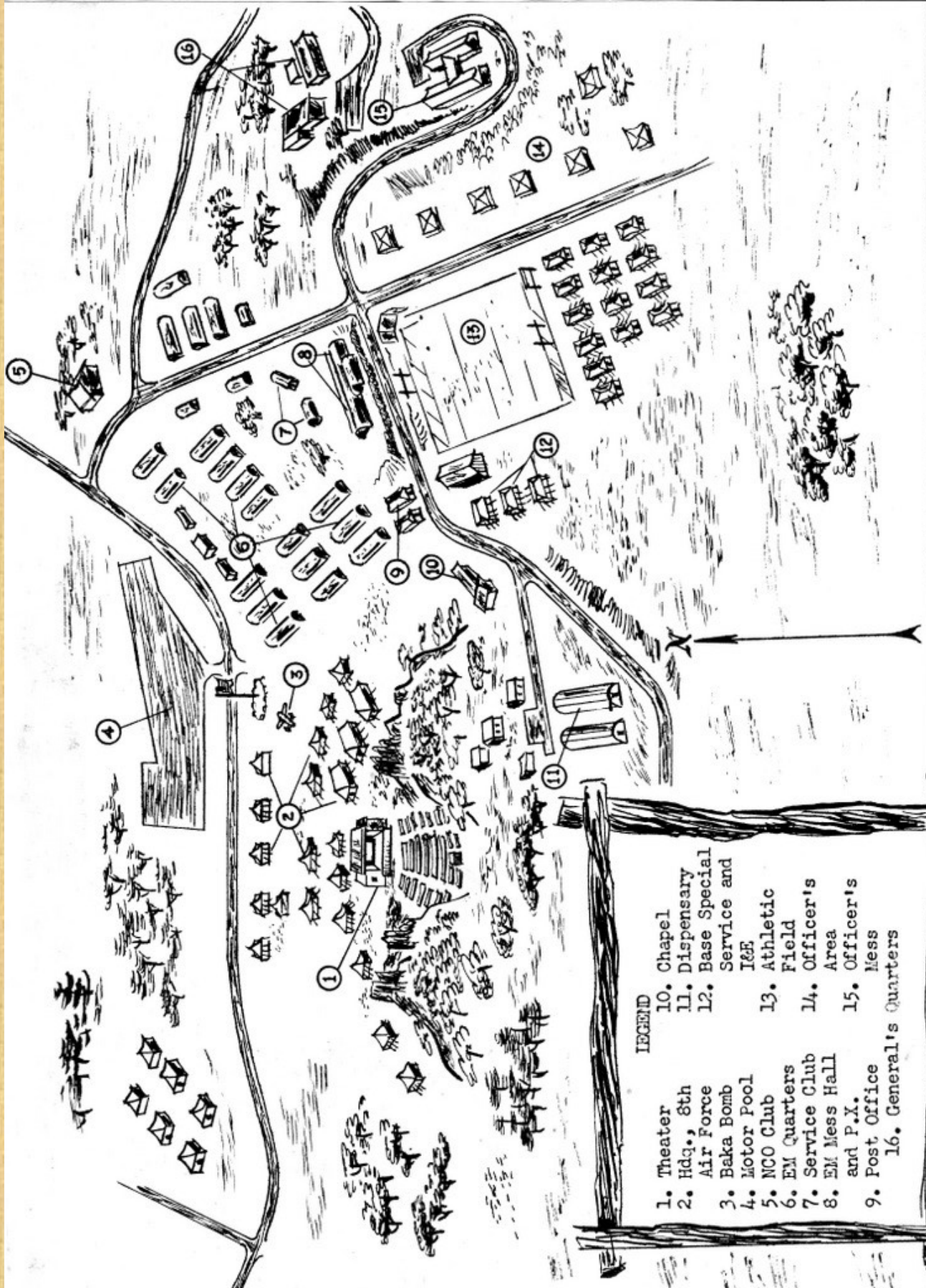
The Staff Duty Officer is available after office hours at tent number 1, phone 7.

Pinetree Army Air Base

Title	Name	Phone	Tent
Commanding Officer	Col George B. Dany	34	7
Executive Officer	Lt Col Simon M. Lutz	34	15
Adjutant	1st Lt Elmer F. Buchanan	34	106
Base S-1	Maj Jacob A. Herrman	88	35
Personnel Officer	Capt Robert L. Mower	84	82
Base S-4	Maj James E. Burke	88	35
Transportation	1st Lt Frank K. Jonen	35	99
Billeting	1st Lt Harry R. Lane	83	36
Post Exchange	1st Lt Kenneth L. McIntosh	85-R2	108

Headquarters and Headquarters Squadron, 8th Air Force

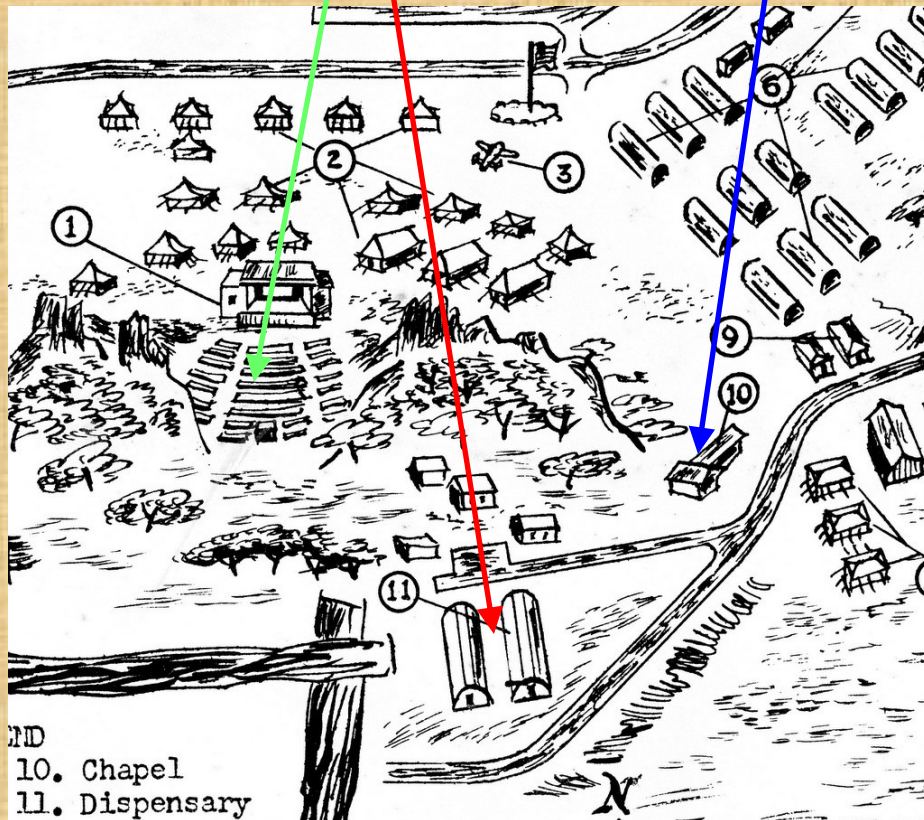
Commanding Officer	Lt Col Robert G. Carnahan	66	50A
Adjutant	Capt George R. Adams	66	45
Ass't Adjutant	2d Lt Frank L. Cash	66	45
Ass't Adjutant	2d Lt George K. Wharton	66	45
Supply	1st Lt Norman R. Estey	65	45

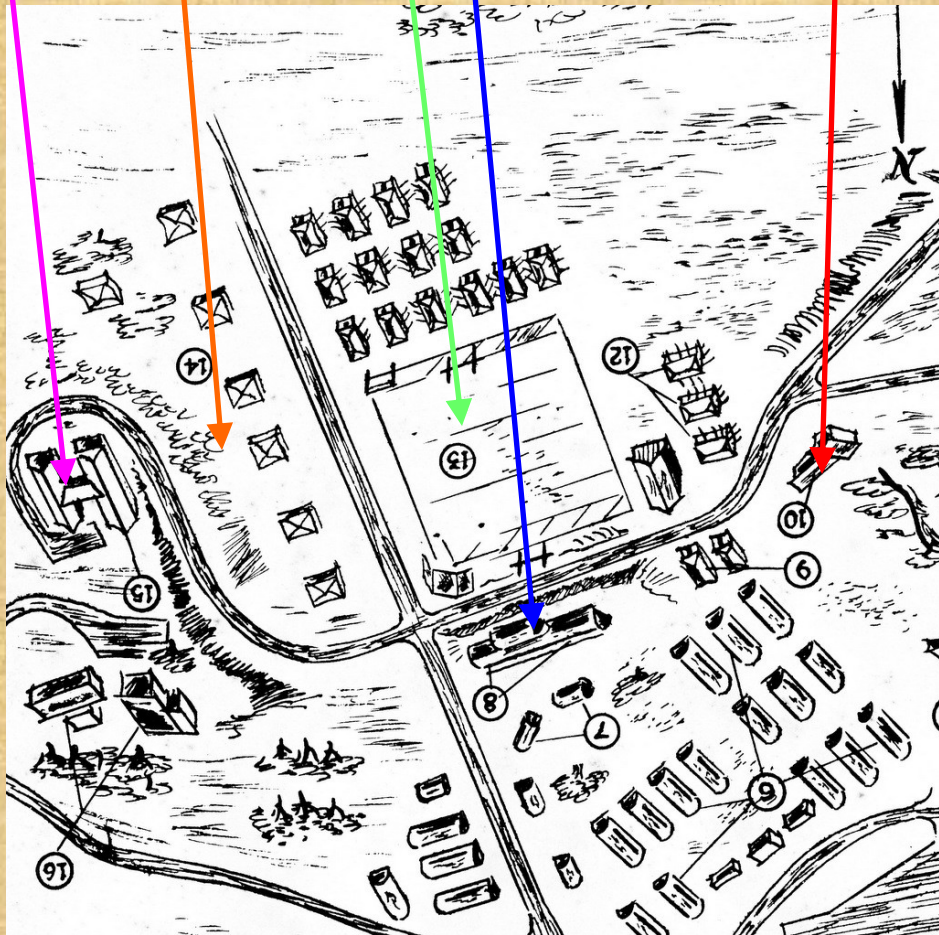
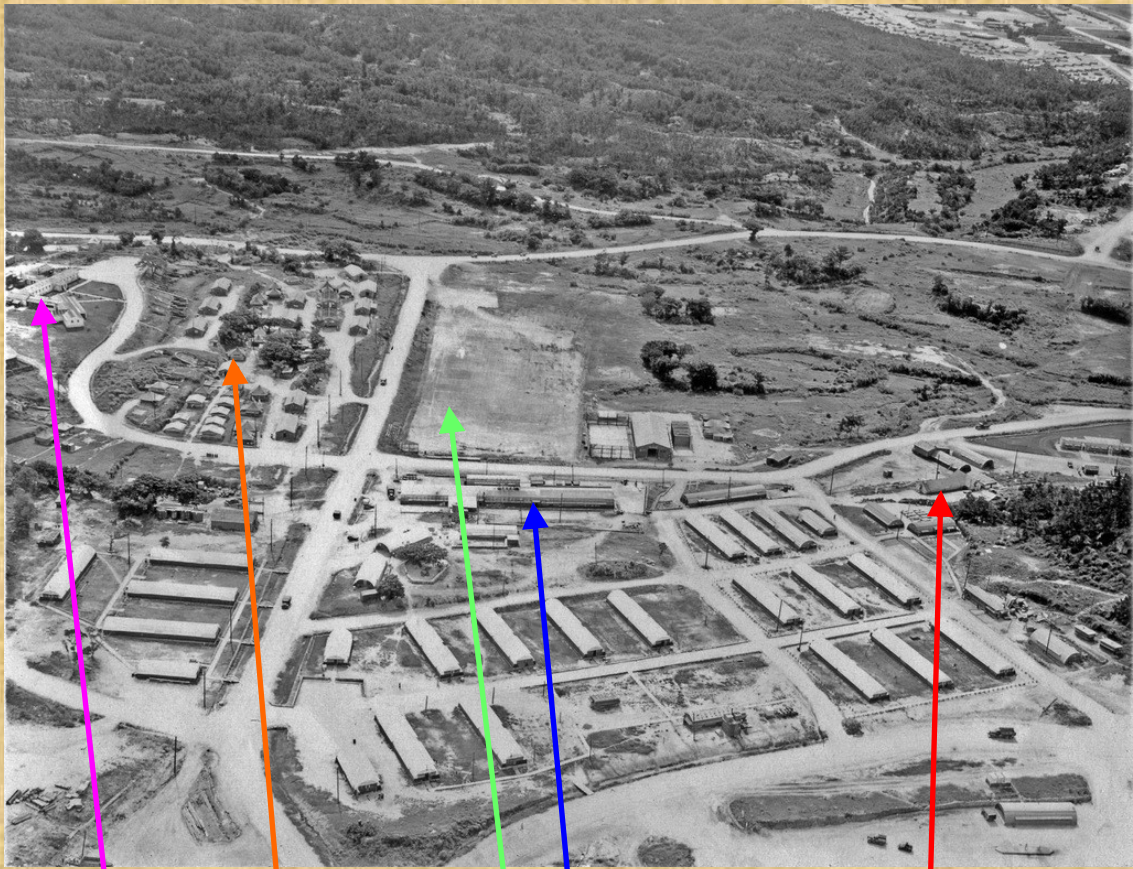


LEGEND

- | | |
|------------------------|---------------------------------------|
| 1. Theater | 10. Chapel |
| 2. Hdq., 8th Air Force | 11. Dispensary |
| 3. Baka Bomb | 12. Base Special Service and I&E |
| 4. Motor Pool | 13. Athletic Field |
| 5. NCO Club | 14. Officer's Service Club |
| 6. EM Quarters | 15. Officer's Area Mess Hall and P.X. |
| 7. Service Club | 16. General's Quarters |
| 8. EM Mess Hall | |
| 9. Post Office | |

1946-47 AERIAL PHOTOS FROM THE PHOTO BOOK "OKINAWA - 1ST AIR DIVISION"
PUBLISHED ON OKINAWA IN 1947

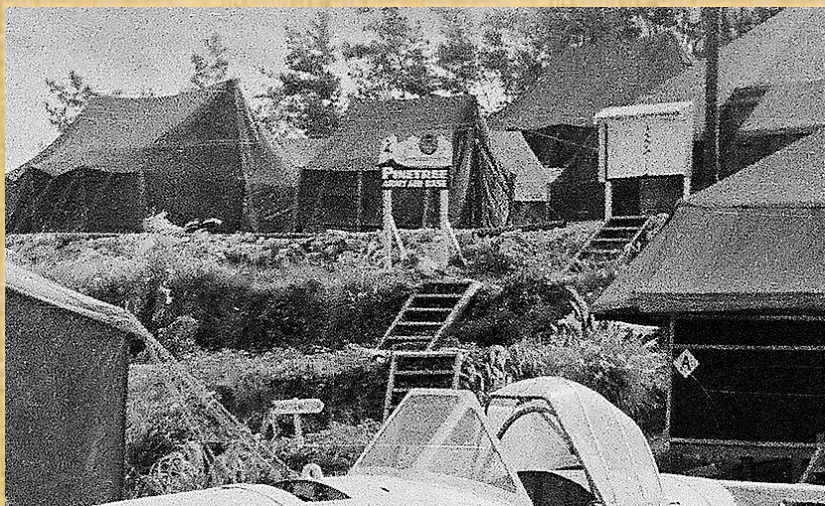




PHOTOGRAPHS FROM PINETREE ARMY AIR BASE



**PHOTO BY WILLIAM BIEWANGA 1ST PHOTO RECON SQDN FLIGHT "C"
ON OKINAWA 7 AUG, 1945 TO 20 FEB 1946**



PINETREE ARMY AIR BASE SIGN AT 8TH AIR FORCE HQ



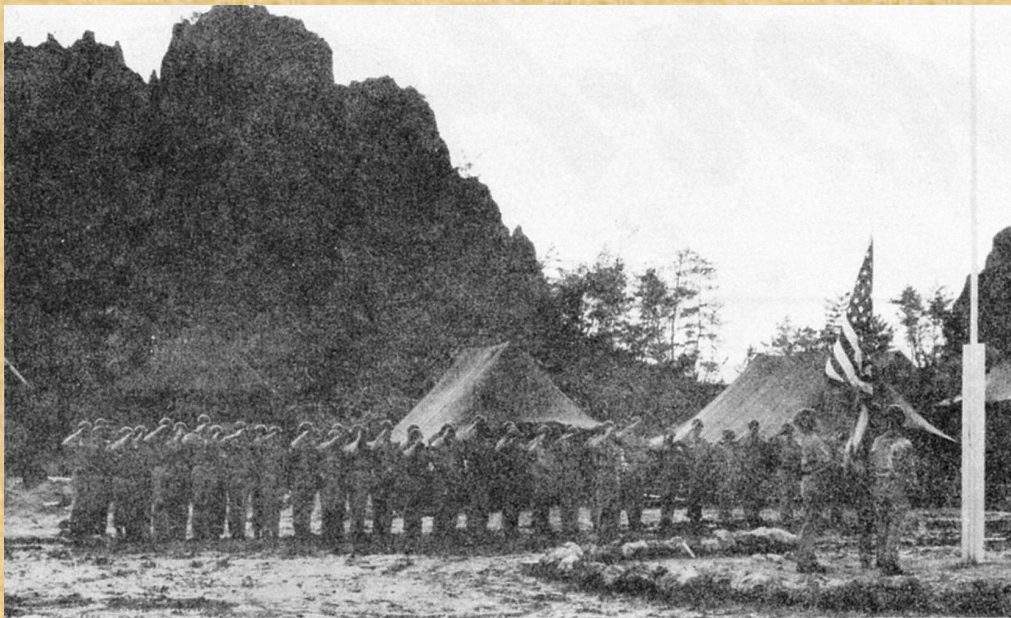
**112th SEABEES WEBSITE PHOTO
PINETREE ARMY AIR BASE SIGN IN THE BACKGROUND AS IN PHOTO ON PAGE 1**

**WEBSITE EMAIL - NOTE REFERENCE TO THE BAKA BOMB ON DISPLAY AT
8TH AF HQ**

301st Bomb Wing 301st Bomb Wing/Kadena AB 1946

Bill Choate wrote on 2005-08-20 00:00:00.0

Comments: Am I crazy or what? My memories of **Okinawa in 46 and 47** was the 301st Bomb Wing and the 8th Air Force station at Kadena. General Ennis Whitehead was Wing Commander. Nowhere can I find anything that say the 301st was on Okinawa at that time.. **Incidentally, when you turned off Hwy One at the entrance to 8th AF Hq, there was a Baka Bomb on display**



FIRST FLAG TO FLY OVER 8TH ON OKI

It was on a murky morning, 25 July 1945, when Gen. Doolittle and two enlisted men hoisted the first flag over Pinetree Army Air Base. A group of Hq's officers attended the brief ceremony.

28 JAN 1946

“SUPER-FORT”

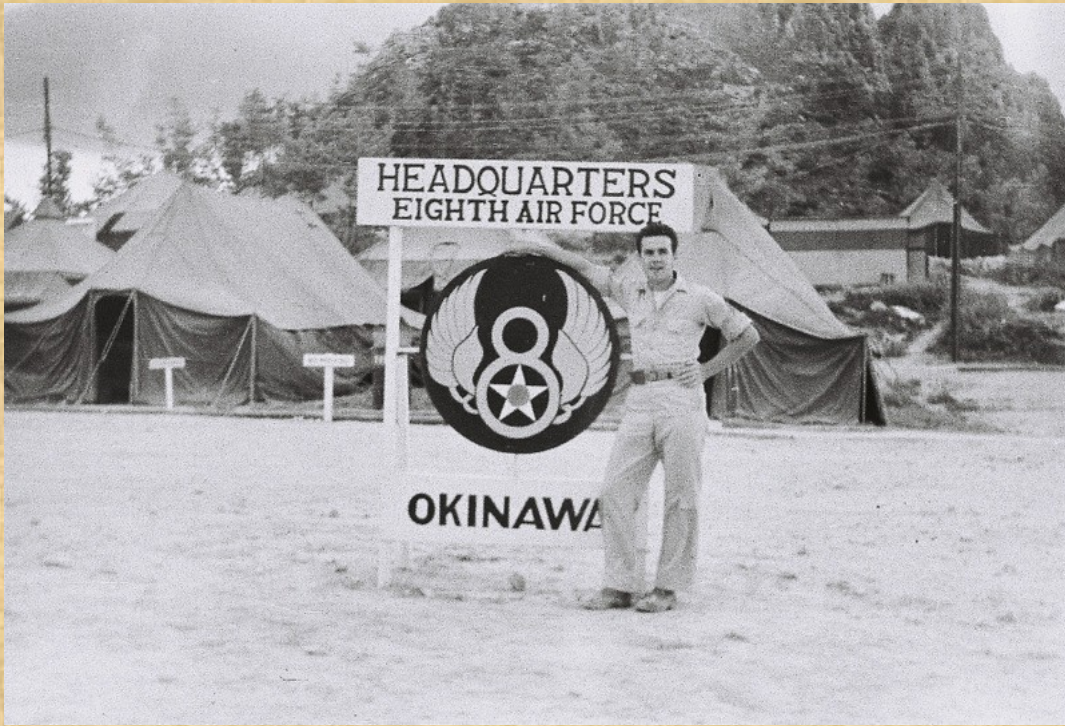
4TH ANNIVERSARY OF THE ACTIVATION OF THE 8TH AIR FORCE



8th Air Force Headquarters

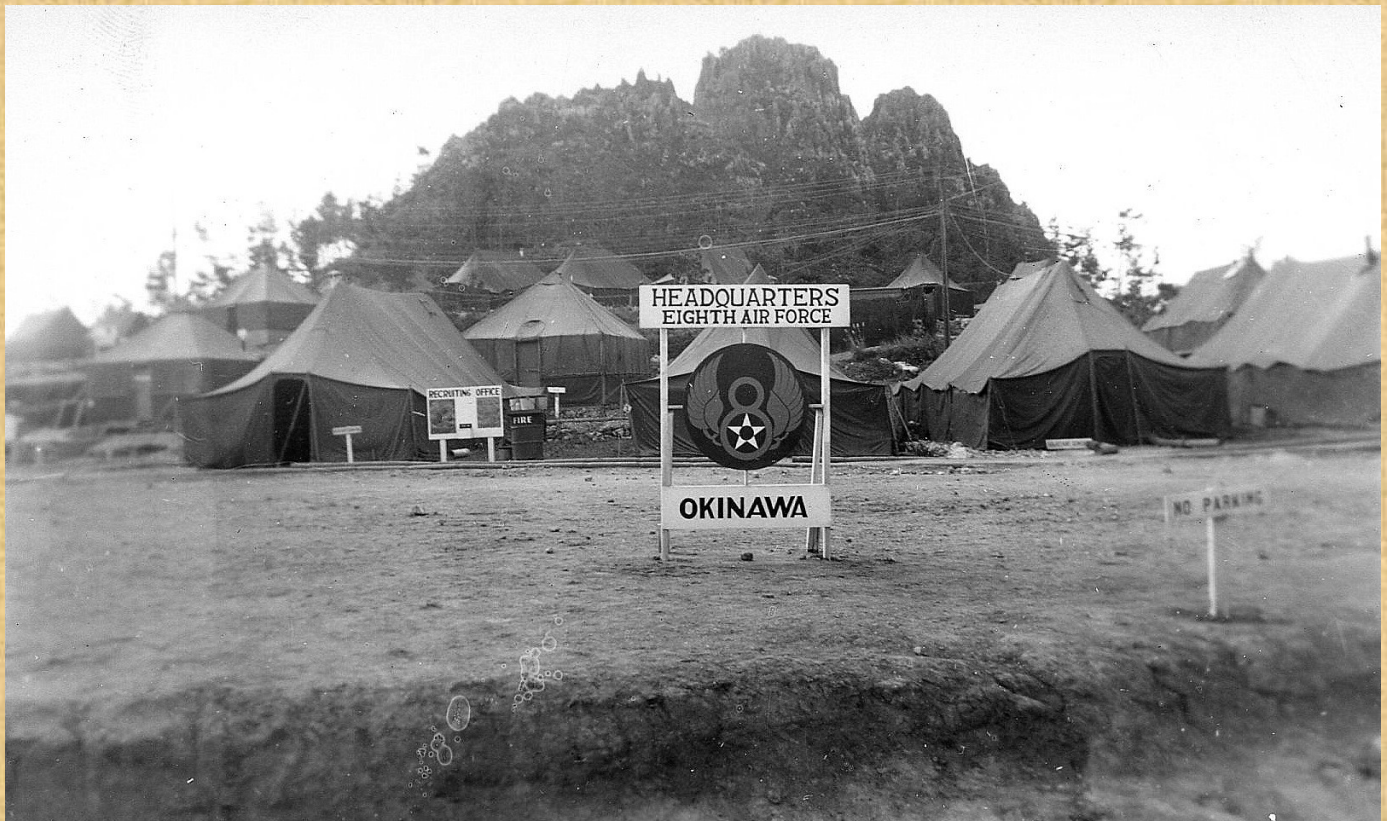
PHOTO FROM 24 NOV 1945 ISSUE OF “SUPER-FORT”
8TH AIR FORCE BI-WEEKLY NEWS MAGAZINE PUBLISHED ON OKINAWA.

NOTE RED ARROW POINTING TO THE BAKA BOMB ON DISPLAY AT 8TH AF HQ.

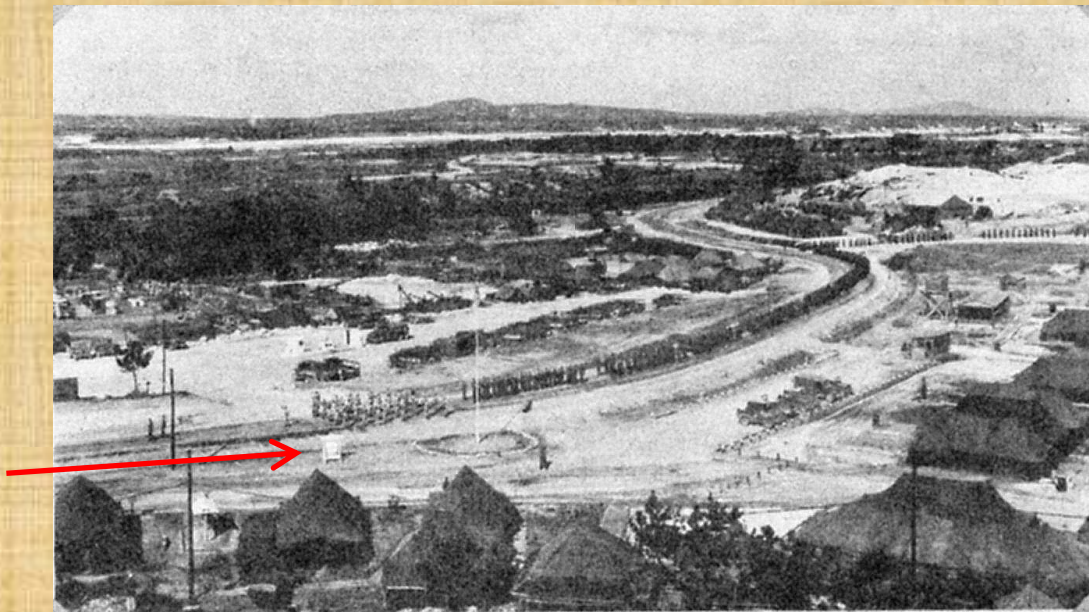


**8TH AIR FORCE HEADQUARTERS
SAKUGAWA (DESTROYED VILLAGE JUST SOUTH OF KADENA AIR FIELD)**





**8TH AIR FORCE HEADQUARTERS
SAKUGAWA (KADENA AIR FIELD)**



**8TH AIR FORCE ON PARADE IN FRONT OF PINETREE HQ. RED ARROW
POINTS TO HQ SIGN
PHOTO FROM "SUPER-FORT" 18 DEC 1945**

Pinetree Army Air Base - Okinawa

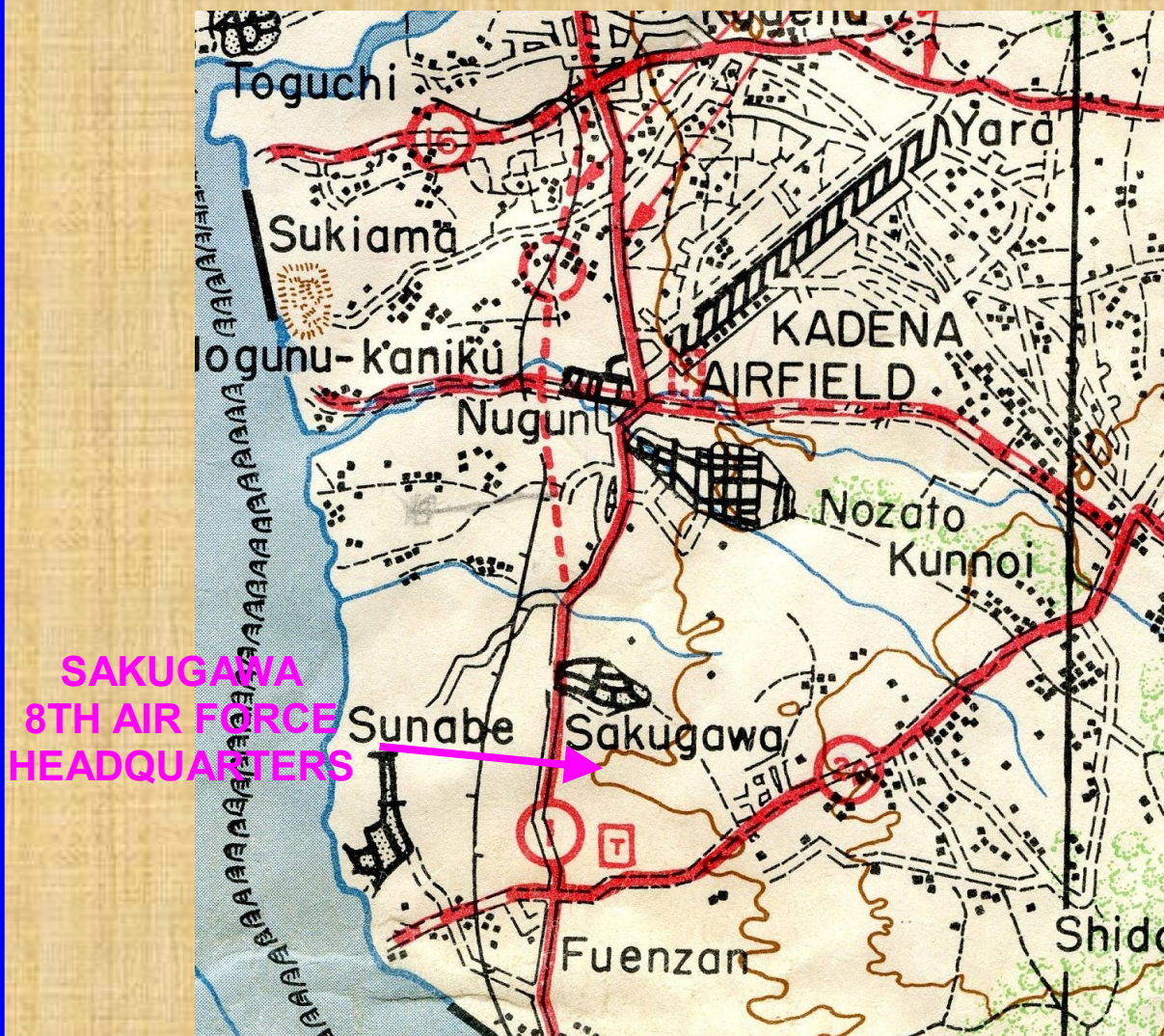
July 16, 1945, Headquarters Eighth Air Force was transferred, without personnel, equipment, or combat elements to the destroyed village of Sakugawa, near Kadena from RAF High Wycombe England. Upon reassignment, its headquarters element absorbed the command staff of the inactivated XX Bomber Command

"The Mighty Eighth" in England

"Pinetree" was the code name for 8th AF Headquarters – at High Wycombe, England. A former girls' school was the headquarters for "The Mighty Eighth" from May 1942 until July 1945, when the headquarters moved to Okinawa.

In June 1946 8th Air Force Headquarters on Okinawa was transferred to MacDill Air Field in Florida.

1945 MAP BELOW SHOWS THE APPROXIMATE LOCATION 8TH AAF HQ



**PINETREE ARMY AIR BASE REFERENCE IN THE "SUPER-FORT" NEWS
MAGAZINE PUBLISHED BY THE 8TH AIR FORCE ON OKINAWA**



**8 A.F. PLANS GALA
CELEBRATION IN JAN.**



Published weekly by the Information & Education branch of Personnel Section for the Enlisted Men and Officers of the Eighth Air Force. (Articles and photos are solicited and should be sent directly to SUPER-FORT, Headquarters, Eighth Air Force, Phone Pinetree 89.)

COMMANDING GENERAL...BRIG GEN PATRICK TIMBERLAKE
 Officer in Charge...Capt Ben J. Borden
 Editor.....T/5 Herb Williams
 Features.....Cpl Arthur Gates
 Art Editor.....Sgt Bishop H. Nash
 Asst Editor.....Cpl Walter Marshall
 Artist.....Sgt Jack Vrooman
 Make-Up.....Cpl Robert Pace
 Typist.....Cpl Ross Elton
 Photographer.....Sgt Chester Wilke
 Circulation.....Cpl Gene D. Beeler
 Reproduction.....948th Engr. Avn. Topo. Co.

SUPER-FORT is published from news and photos supplied by staff members, group correspondents, Army and Camp Newspaper Services. Republication of CNS credited matter prohibited without permission of Camp News Service, 205 E. 42nd St. NYC 7.

The Cover

The photomontage on the cover of this issue is the creation of Sgt Chester Wilks, Super-Fort staff photographer. This Christmas home is far away for all of us. It is a vision seen from an Okinawan beach. It is an image in the clouds. For Sgt Wilks, who calls Ashland, Ky. his home but is partial to any part of the forty eight states, this montage is a labor of love.

The Japanese characters on the cover are a transliteration of our Merry Christmas.

the cooperation of OBASCOM and Allied Military Government officials who arranged for an expedition of GI lumberjacks to go to the northern end of the island for purposes of cutting down enough Christmas trees to supply all units on Okinawa.

TIGHT XMAS

The fourth anniversary of the founding of the 8th Air Force will be a day of gala celebration on Okinawa, according to Colonel William T. Smith, Staff Intelligence Officer and head of the committee which are working on the preliminary plans for the occasion. The celebration is scheduled to be held some time during the latter part of January. The committee is waiting for word from Washington to verify the exact date of the anniversary.

The preliminary plans, subject to change without notice, call for an aerial review with bombers and fighters flying in formation. There will probably also be a ordnance display of modern weapons. Each organization will hold its own celebration and all mess halls will serve a special menu on that day.

Committees are being appointed at the 301st Fighter Wing, the 316th Bomb Wing, the Okinawa Air Depot, and Pinetree Army Air Base, to complete arrangements for their participation in the program.

Whether it will be a day off for 8th personnel has not been decided yet.

6 Enlisted Men Two Officers For Tokyo Tour

Captain Harry C. Ream, Staff Special Services officer, has announced that henceforth six enlisted men and two officers will be eligible for the plane trips to Tokyo. Three of these trips, according to policy established by USASTAF, will take place every 10 days. Three days will be spent in Tokyo and two for the flying time up and back.

The order of priority for sending men on these trips, arrived at by picking names out of a hat, will be: first, Pinetree Army Air Base; second, Okinawa Air Depot; third, 301st Fighter Wing; and fourth, the 316th Bomb Wing. The first men, selected by their Commanding Officers on the basis of points, will leave from Pinetree, the second from Okinawa Air Depot, and so on down the line. After 316th Wing men have gone the rotation from Pinetree starts all over again.

The housing and transportation bottleneck in Tokyo precludes the sending of any more men than eight per trip at the present time.

24 NOV 1945
"SUPER-FORT"

GI SCHOOL

(Continued from Page 1)

on their personnel records. These Certificates of Achievement may later be submitted to civilian universities and high schools for credit.

At Pinetree Army Air Base, it is expected that classes will start on the first of January or before. Chaplain Clasby has already started a class in Theology which he conducts twice a week.

18 DEC 1945
"SUPER-FORT"



Comment & Query

(All letters must be signed, but if requested the name of the writer will not be disclosed. Only questions of general interest will be answered. No personal answers to letters can be given. Treat only one topic in a letter, keep it under 200 words, and type it, if possible. State your location and the date. Address correspondence to Comment and Query, Editor, Pacific Stars and Stripes, APO 500, Tokyo.)

Protest Repercussions

I sincerely believe that we Americans now visiting the island of Okinawa for an indefinite time have a legitimate bitch to make. You see last Sunday, January 13, we had a little get-together over at 10th Army Hq. It seemed the demobilization plan was being slowed down for no apparent reason. There were only about 13,000 GI's present for the discussion. The whole formation was orderly, quiet and well organized.

There was a Chaplain in charge of the proceedings and he permitted various individuals to speak their piece if they so desired. There were two officers present that had enough intestinal fortitude to express their views. Both gave very intelligent suggestions and their gripes ran parallel to ours.

I would like to mention just what action was taken on one of the officers

by his superiors. This Captain was the Information & Education officer for the Pinetree Army Air Base of 8th A. F. Hq. It is his duty to keep us informed of the current happenings of the world. He made no criticism of his superiors or of the government. He stated facts and figures. He was also criticized for reprinting some of Senator Johnson's address in our local paper. This Captain was relieved of his command. It seems that the so called "West Point Protective Association" didn't approve of his views and acted accordingly. . . .

A SHAKIN' STAFF
Okinawa, Jan. 20

A 24th Major Sounds Off

I have read several of the articles which have appeared in Comment and Query that concern the 24th Division. Now this is my opinion: All are either

PACIFIC STARS & STRIPES 1 FEB. 1946

Island Activities

(Programs subject to change without notice)

STAGE

"SING OUT," USO Camp Show, vaudeville varieties, scheduled by OBAS-COM Special Service Section:
Tonight.....Pinetree Air Base

SCREEN

Baten Ko....."FALCON IN FRISCO."
Easley Bowl...(not scheduled)
Kuba-Saki....."SONG OF OLD WYOMING"
Tengan,NSD...."PARIS UNDERGROUND"
Sldrs Bowl...."WHAT NEXT, HARGROVE"
529 QM Gp....."THIS LOVE OF OURS"

WXLH

1630 Joe Reichman Orchestra, 1700 News (Studio), 1705 Jive At Five, 1730 Jack Kirkwood, 1745 Down Beat, 1800 Barry Wood, 1830 Supper Club, 1845 Bing Sings, 1855 News (Studio), 1900 Alan Young, 1930 Guy Lombardo, 2000 Fibber McGee, 2030 Bob Hope, 2100 Hildegrade, 2130 Globe Theatre, 2155 News (Local), 2200 Requestfully Yours, 2245 Organ Moods, 2400 News (SW).

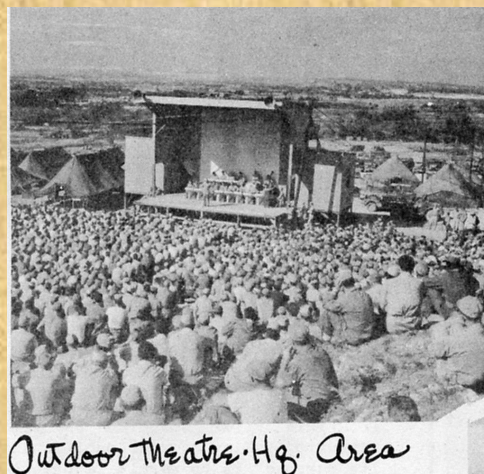
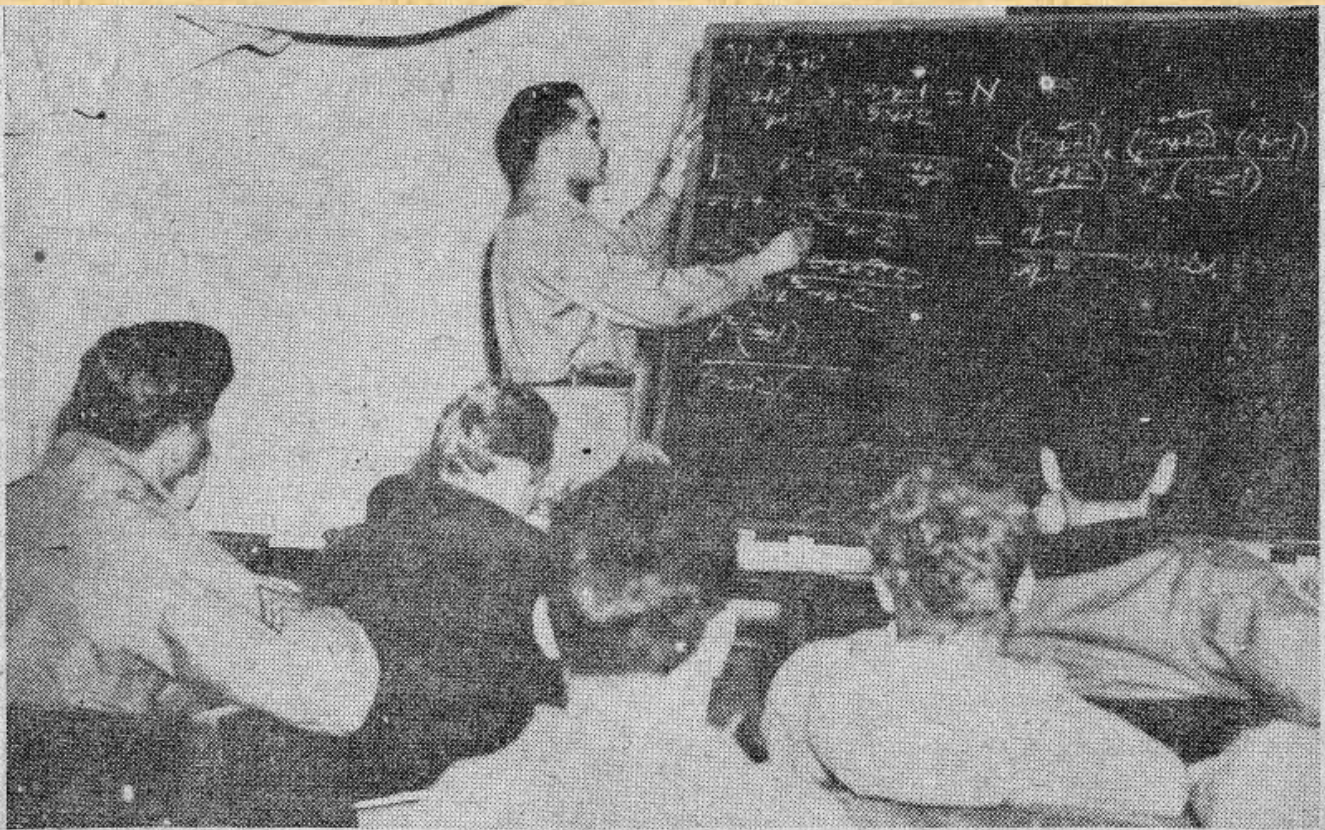


PHOTO OF PINETREE THEATER FROM
"SUPER-FORT" 24 NOV 1945

DAILY OKINAWAN NEWSPAPER 5 MARCH 1946

"PINETREE AIR BASE" IS MENTIONED IN THE MOVIE SECTION MANY TIMES IN
MARCH 1946 ISSUES OF THE DAILY OKINAWAN



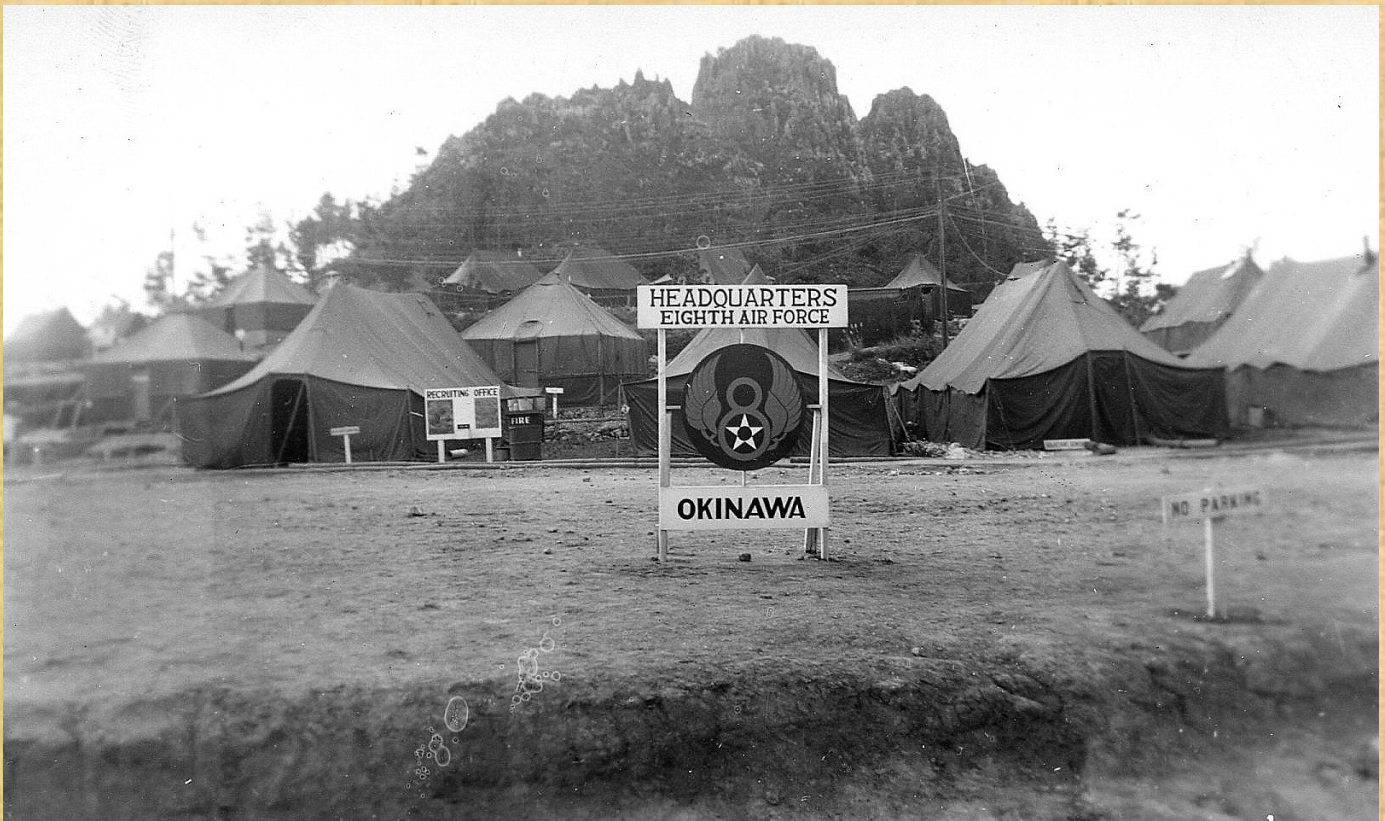
SHOWN TEACHING HIS ALGEBRA CLASS IN THE EIGHTH AIR FORCE PINETREE SCHOOL IS CPL GENE HANDLER, FORMERLY OF THE SCIENTIFIC RESEARCH STAFF OF COLUMBIA UNIVERSITY. CLASSES IN PHYSICS, AMERICAN HISTORY, BUSINESS ENGLISH AND COLLEGE ALGEBRA ARE HELD FOUR TIMES A WEEK IN THE BASE CHAPEL.

**8TH AIR FORCE "PINETREE" SCHOOL
PHOTO PUBLISHED IN THE 8 MARCH 1946 ISSUE OF
"THE DAILY OKINAWAN" NEWSPAPER**

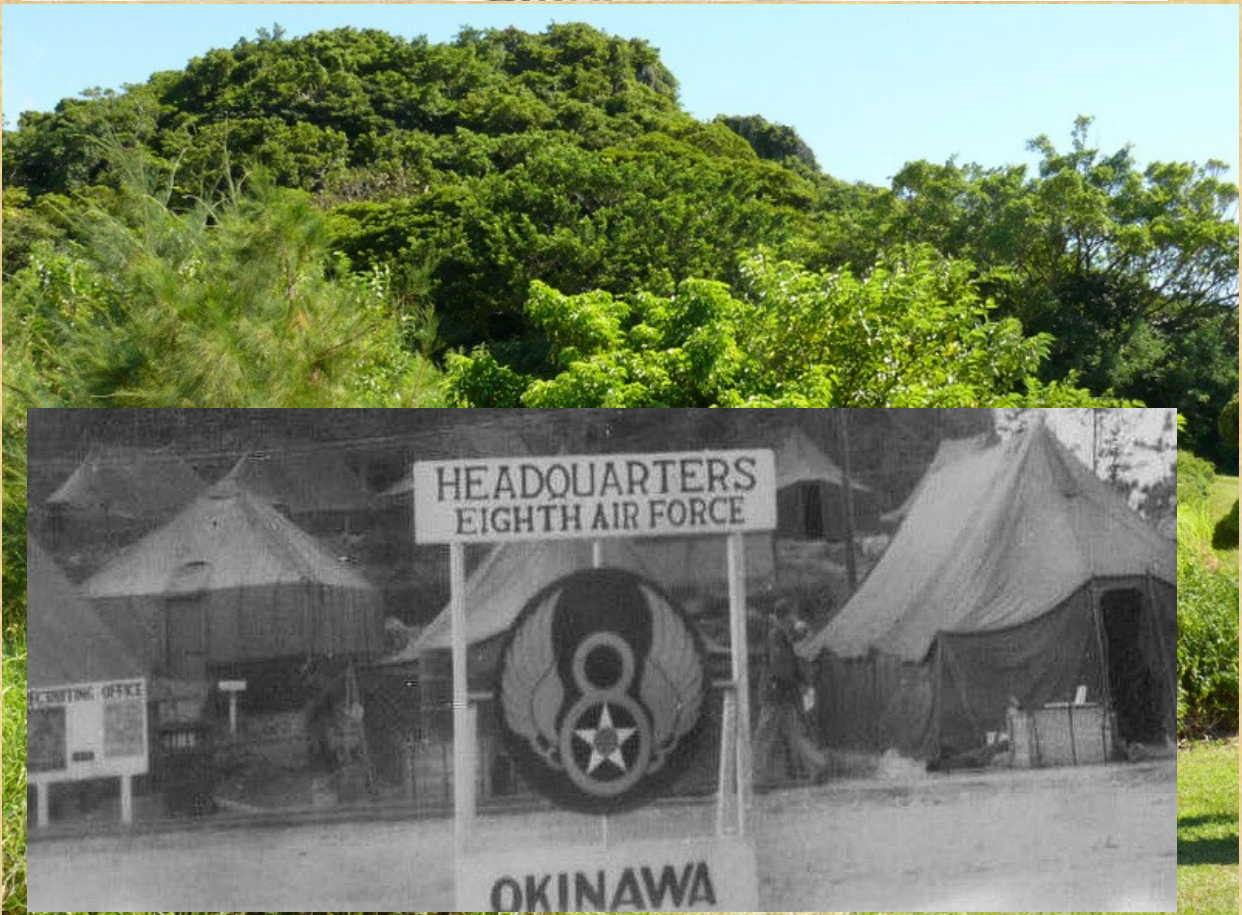
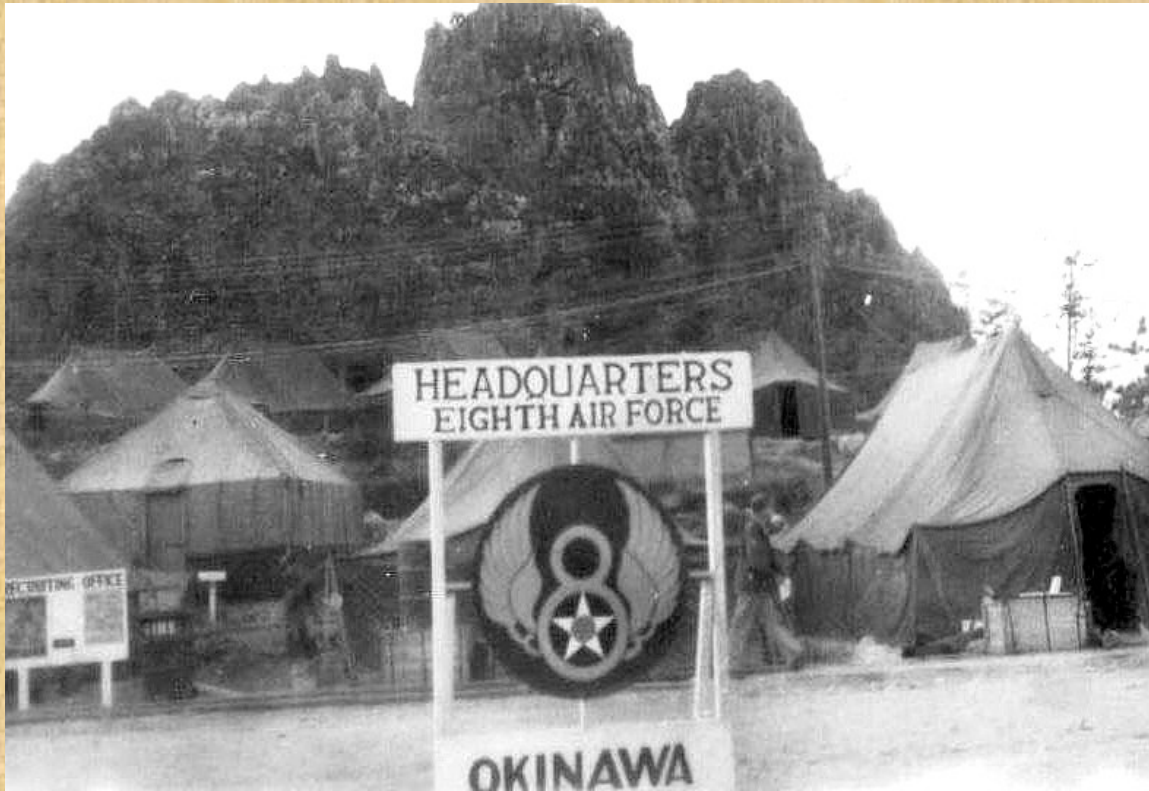
8TH AIR FORCE HEADQUARTERS - OKINAWA 1945-46



RED ARROW SHOWS SIGN VIEW



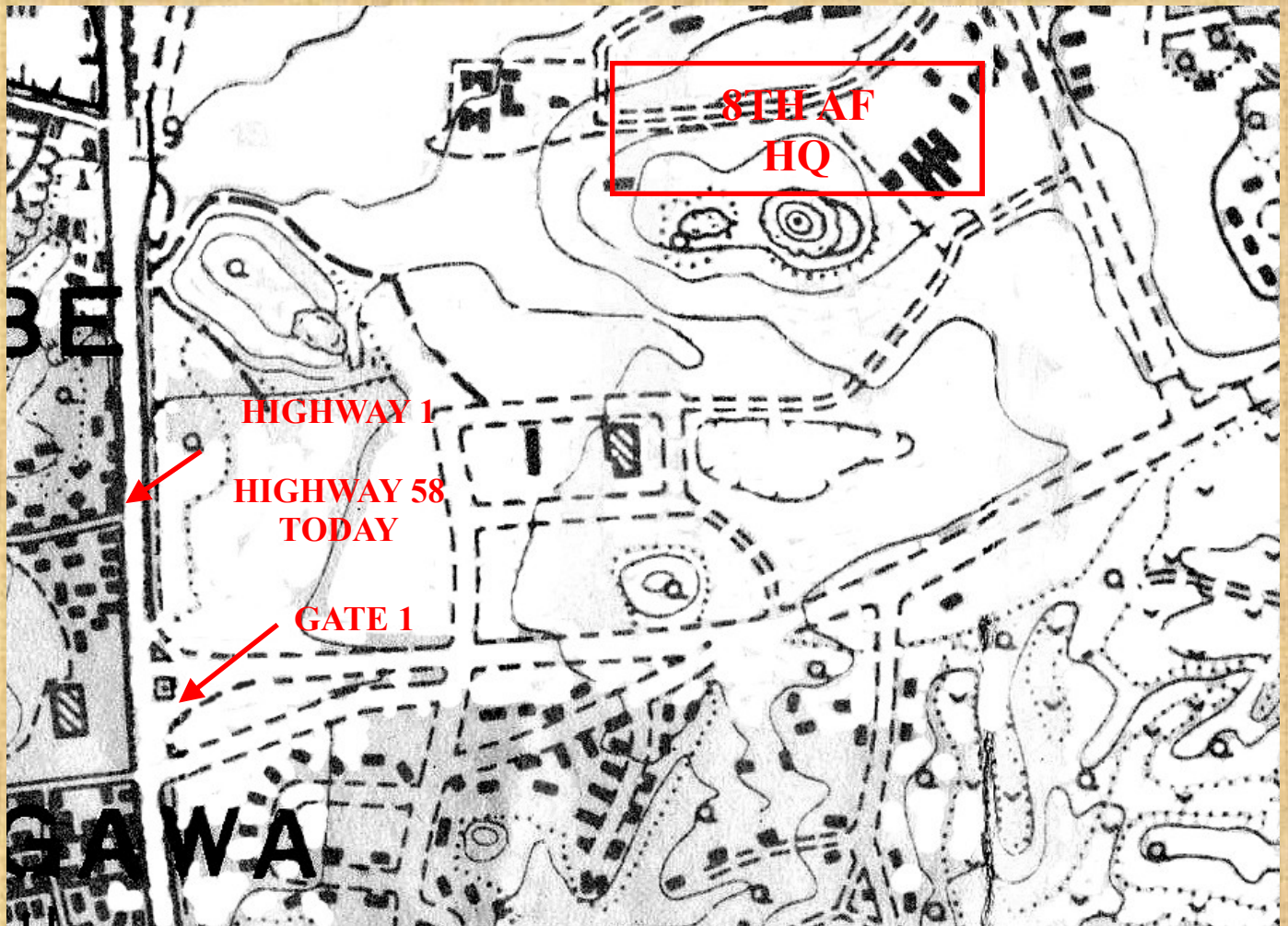
TREE GROWTH AND VEGETATION HAVE COVERED THE 1945 OUTCROPPING MAKING IT DIFFICULT TO SEE THE ACTUAL ROCK FORMATION, BUT THE OUTLINES MAKE IT ALMOST CERTAIN THAT THIS WAS THE LOCATION OF THE EIGHTH AIR FORCE HEADQUARTERS



JULY 2009 PHOTO WITH 1945 PHOTO SUPERIMPOSED

**PINETREE ARMY AIR BASE
8TH AIR FORCE HEADQUARTERS JULY 1945 TO JUNE 1946**

1985 MAP OF KADENA AIR BASE



ENLARGED SECTION OF 1946-47 PHOTO SHOWING THE LOCATION OF 8TH ARMY AIR FORCE HEADQUARTERS (PINETREE ARMY AIR BASE) AT THE PRESENT DAY LOCATION OF KADENA AIR BASE GOLF COURSE

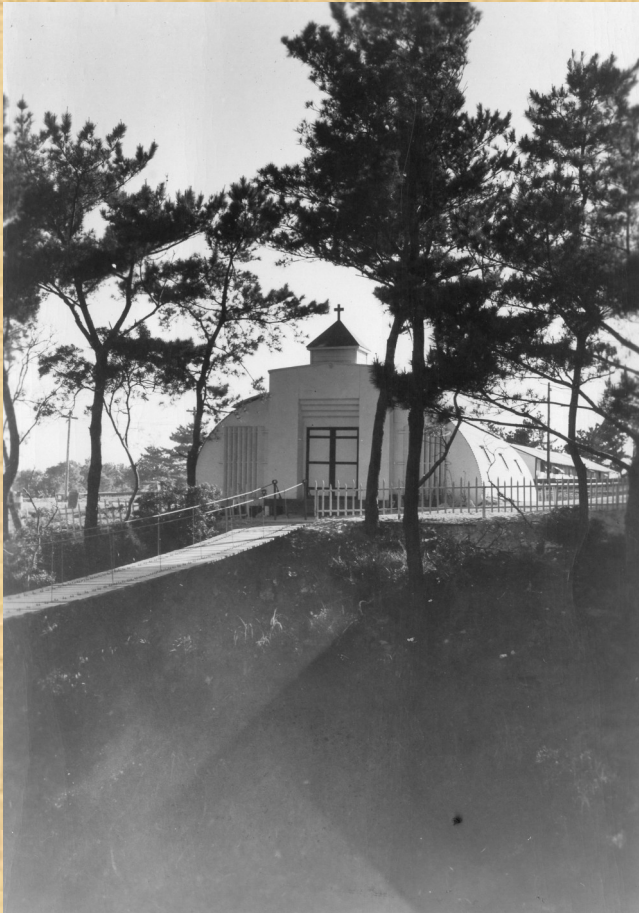
**ADDITIONAL PHOTOS FROM PHOTO ALBUM OF OFFICER WITH THE
305TH FCS PART OF 8TH AIR FORCE**



NEW HEADQUARTERS BUILDING

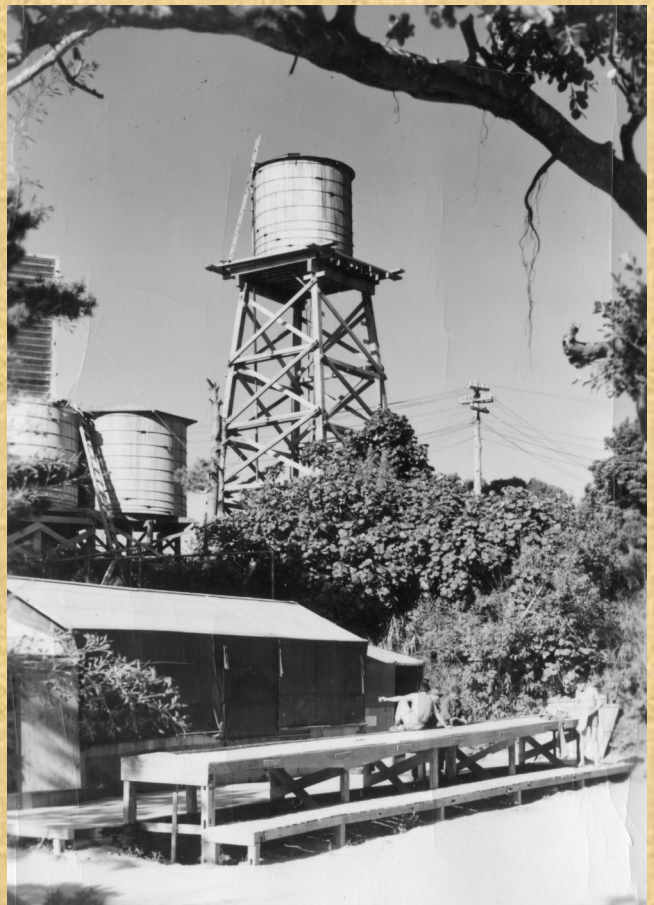


8TH AIR FORCE MOVIE THEATER



8TH AIR FORCE CHAPEL

8TH AIR FORCE WATER TOWERS



EIGHTH
AIR
FORCE



Directory
of -

PINETREE
AIR BASE

APO. 902
OKINAWA

FRONT COVER FOR PINETREE AIR BASE - 8TH AIR FORCE
TELEPHONE DIRECTORY